



Cedar Lodge Precast Mantel

Installation Instructions for
GWMT-60 and GWMT-72



Contents

Required Tools.....	2
Important Safety Instructions.....	3
Included with This Kit.....	4
Mounting Instructions.....	5

Required Tools



- **Two or more people are required for this installation**



- **Power Drill with Phillips bit**

For fastening the mantel to wall surface



- **Leather Gloves**

To protect hands from rough edges on concrete



- **Utility Knife**

To cut and remove packaging



- **Level**

To ensure mantel is parallel to floor



- **Tape Measure**

For locating and centering mantel



- **Stud Locator**

For locating studs inside a finished wall



- **Pencil**

For marking stud locations

IMPORTANT SAFETY INSTRUCTIONS

SAVE THESE INSTRUCTIONS

When using the furnishing, basic precautions should always be followed, including the following:

- Read all instructions before mounting or using the mantel
- Use the furnishing only for its intended use as described in these instructions.

! IMPORTANT !

The fasteners supplied with this furnishing are intended for use in standard wood stud walls only. Minimum wall stud size required is 2"x 4", with drywall or finished wall surface ranging from ½" to ¾" thick. For all other mounting surfaces, use appropriate fasteners as specified by local building codes or other jurisdiction. For mounting to other wall types; if you are at all unsure of the correct fastening method, contact your local building official. Improper mounting may lead to property damage, injury, or death.

DO NOT OVERLOAD MANTEL. THE MAXIMUM LOAD FOR GWMT-60 is 150lbs. MAXIMUM LOAD FOR GWMT-72 is 180lbs.

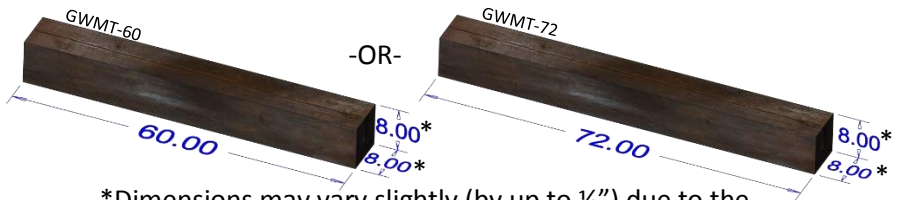
MANTEL Precast MATERIAL MEETS NON COMBUSTIBILITY STANDARDS IN ACCORDANCE WITH ASTM E136.

! Warning !

Combustible objects placed on or around the mantel must meet your fireplace manufacturer's requirements for clearances to combustibles.

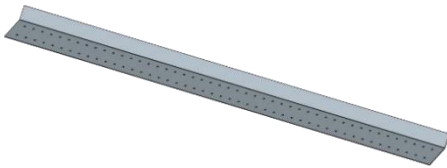
Included in this kit

Mantel

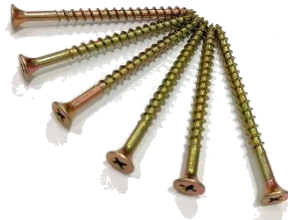


*Dimensions may vary slightly (by up to ½") due to the mantel being molded from real rough-cut cedar beams.

Hanging Bracket



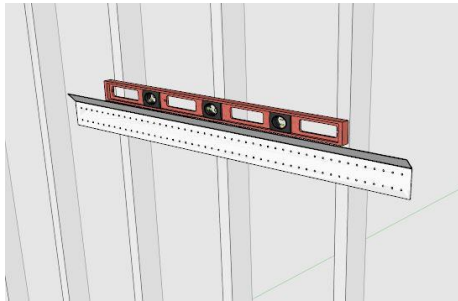
#8 x 2-1/2" Wood Screw (QTY 6)



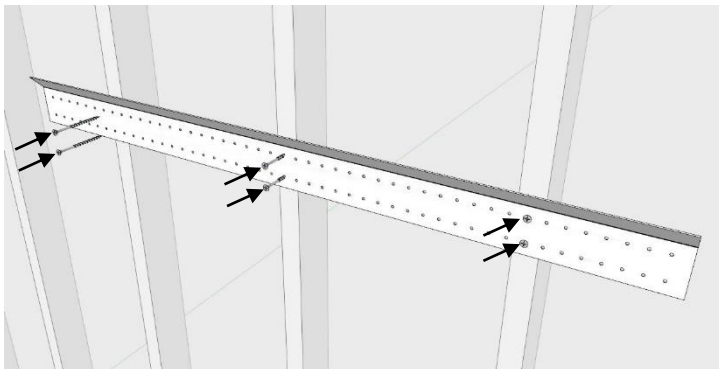
NOTE: WOOD SCREWS SHOULD ONLY BE USED FOR MOUNTING THE MANTEL TO A WOOD STUD WALL OR OTHER SOLID WOOD SURFACE.

Mounting Instructions

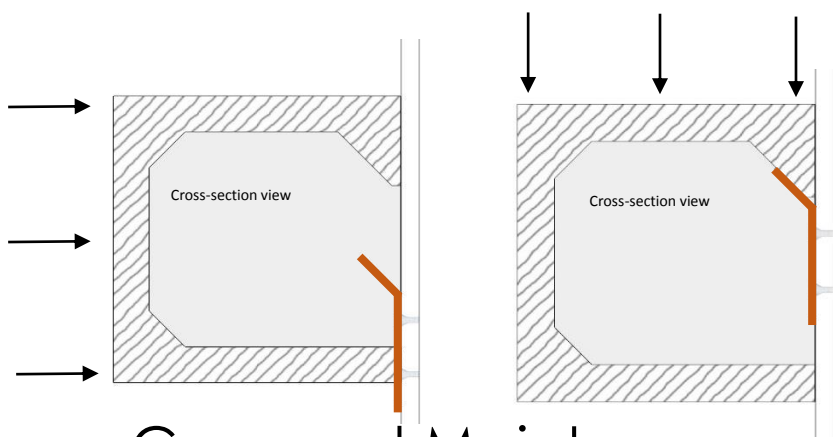
- Check for damage. Do not use damaged components.
 - It is required to mount the unit at wall stud locations (if applicable) for proper holding strength and weight distribution.
 - Be sure to follow your fireplace manufacturer's clearances to non-combustibles or local code if applicable when determining a location for your mantel. Combustibles set on a non-combustible mantle must meet clearance requirements for combustibles.
1. Choose a location for your mantel and locate studs behind the wall surface using a stud locator. Mark stud locations with a pencil for reference in the next step.
 2. Hold the Hanging Bracket up to the wall surface, centered at the desired location, and ensure it is parallel to the floor using a level.



3. Use a pencil to mark hole locations on the bracket, lining it up with **at least 3 studs**.
4. Insert the supplied **#8 x 2-1/2" Wood Screws** at the marked hole locations, two screws per stud location as shown below.



5. With two people, one lifting from each end, lift the mantel up so that the top edge of the bracket is approximately centered in the cavity at the back side and hold flush to the wall surface. Carefully lower on to the hanging bracket and ensure the mantel is seated properly before placing the full weight of the mantel on the bracket.



Care and Maintenance

To Keep your mantel looking new, we recommend the following:

- Minor surface scratches can be removed by re-sealing.
- If any colored liquids such as wine or soda are spilled on your mantel, clean off immediately to avoid possible staining.
- We recommend dusting your mantel regularly and cleaning with a mixture of mild dish detergent and warm water; rinse thoroughly.
- We recommend sealing your mantel as needed. If the surface begins looking dull, clean and re-seal with sealer.
- All mantels arrive pre-sealed with a solvent-based sealer.