

ATTENTION: Installer please leave these Instructions with the homeowner.



Legacy ZC Glass Doors

For Factory Built Fireplaces

Installation & Operating Instructions



STOLL FIREPLACE, INC.

153 Highway 201

Abbeville, SC 29620

(800) 421-0771

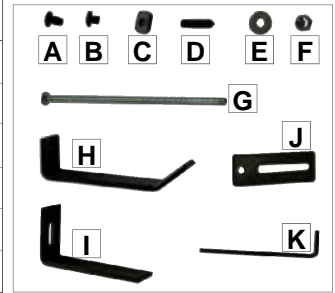
customerservice@stollfireplaceinc.com

www.stollfireplaceinc.com

Installation Instructions

PARTS INCLUDED FOR INSTALLATION:

A	4 ea. 1/4-20 x 3/8" Machine Screw	G	2 ea. 1/4-20 x 6" Bolt (Not Used)
B	4 ea. 1/4-20 x 1/4" Machine Screw	H	2 ea. Lintel Bracket (Not Used)
C	4 ea. 1/4-20 Track Nut	I	4 ea. L-Bracket
D	4 ea. 1/4-20 x 1" Pressure Screw	J	4 ea. Flat Bracket
E	2 ea. 1/4" Flat Washer (Not Used)	K	1 ea. Allen Wrench
F	2 ea. 1/4-20 Nut (Not Used)		1 roll Fiberglass Insulation

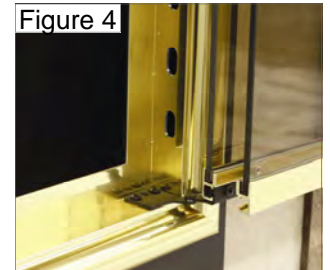
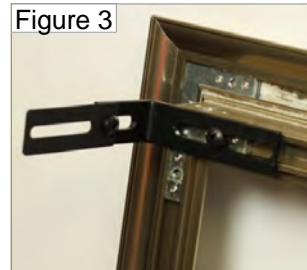
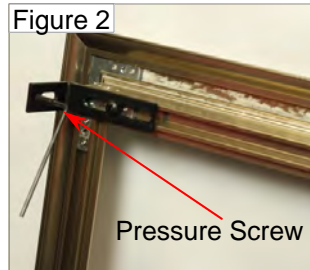
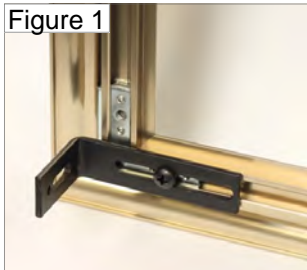


PLEASE NOTE: Your Legacy ZC Glass Doors must be installed and adjusted correctly.

Misalignment of the enclosure frame can cause improper latching of the glass doors, glass breakage, and/or improper operation. Please read and follow the installation instructions carefully. If you do not feel confident that you are equipped to complete the installation properly please contact your Stoll Dealer to arrange professional installation.

If you have questions:

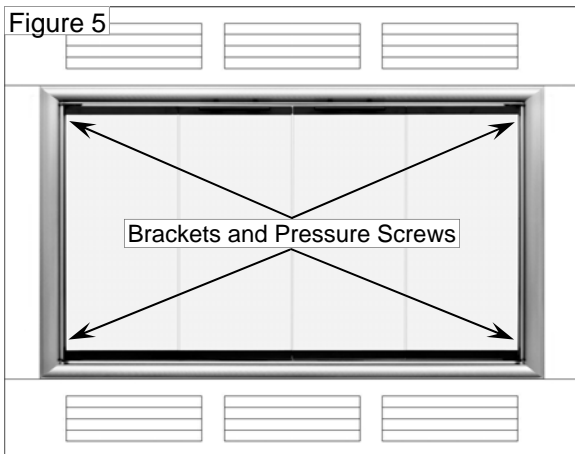
Please contact your Stoll Fireplace Dealer or Stoll Fireplace, Inc. before proceeding with installation.



- Remove Cabinet Mesh Screens from the enclosure if so equipped. Set the screens aside in a safe place.
 - If Hanging Mesh was ordered see instructions on **Page 4**. Attach the mesh curtain before installing the enclosure.**NOTE:** Skip this step if the OEM screens that came with the fireplace are to be retained.
- Attach an L-Bracket (I) to all four corners of the enclosure. Use 1/4-20 x 3/8" Phillips head machine screws (A) into the tapped 1/4-20 holes in the horizontal legs of the enclosure corner brackets. (Figure 1) Thread in the Pressure Screws. **Alternate Method:** Track nuts (C) are provided to allow mounting the L-Brackets in another location on the enclosure frame if there are obstructions to the standard corner mounting position.
- Set the Legacy ZC Glass Door into the ZC Fireplace firebox opening.
 - Check that the OEM screens (if retained) will operate smoothly with the new Legacy ZC Glass Doors installed.
 - If the OEM screens will not operate correctly contact your Stoll dealer to order screens to fit the new ZC Glass Doors.

⚠ CAUTION: Screens must be installed and operate properly on your ZC-Fireplace before lighting a fire.

Never light a fire without working screens installed on the ZC-Fireplace.



- Center the Legacy ZC Glass Door frame in the fireplace opening.
- Slide the L-Brackets close to the sides of the fireplace. Tighten the 1/4-20 x 3/8" machine screws.
- Tighten the Pressure Screws evenly. Don't over-tighten. (Figure 2) **NOTE:** Flat Brackets (J) are provided if the fireplace design requires longer brackets. Use the 1/4-20 x 1/4" Machine Screws (B) to attach the Flat Brackets to the L-Brackets. (Figure 3)
- Replace the Cabinet Mesh Screens if so equipped.
- Check that the ZC Glass Door is aligned level, straight, and square. **NOTE:** Failure to align the ZC Glass Doors properly may result in glass breakage or other damage directly attributable to improper installation. **NOTE:** If you are using the OEM screens that are part of the ZC-Fireplace check again that they operate freely.

⚠ CAUTION: All Glass Doors for ZC-Fireplaces are engineered with air spaces around the frame and air-gaps in the glass. These air-gaps are essential to help cool the ZC-Fireplace should the glass doors be closed accidentally during operation. Figure 4 shows the air-slots in the Legacy ZC Glass Door frame. Never insulate or seal the enclosure frame.

Under no circumstances should these air-gaps be tampered with or altered in any way.

Operating Instructions

⚠ CAUTION: Do not light a fire until you read and completely understand the Operating Instructions that follow. If you have any questions or concerns, please contact your Stoll Fireplace Dealer or Stoll Fireplace, Inc. before proceeding.

GENERAL SAFEGUARDS:

- Excessive heat can cause damage to the Legacy ZC Glass Doors and/or loss of temper in glass resulting in glass breakage. A very hot wood or gas fire, hot coals, embers, ashes, and/or logs coming in contact with the back of the enclosure can cause discoloration or more serious damage to the enclosure finishes. This type of damage, caused by over-heating, is considered abuse and is not covered under warranty.
- Do not burn trash, construction materials, pressure treated lumber and/or railroad ties in your fireplace. The intense heat that these types of materials can produce can damage your Legacy ZC Glass Doors and the fumes from burning these types of materials can create a serious health hazard. Dry, seasoned hardwood is the recommended fuel.

⚠ CAUTION: Stoll uses very high quality tempered glass but tempered glass is breakable like any glass. It is the operator's responsibility to read, understand, and follow the instructions below and to exercise due caution. The most important precaution is to keep the glass doors open when the fire is burning. The tempering process makes the glass stronger and more resistant to heat and impact but not impervious. Avoid striking the glass with logs or fireplace tools. If tempered glass does fail it breaks into small pieces. Glass pieces may fly about the area. Never sit, or allow children or anyone else to sit, close to the glass when the fire is hot. Use a protective hearth rug or other suitable non-flammable protection in front of the fireplace to protect wood floors and/or synthetic carpets. In the event that the glass should break, the resulting small pieces could burn skin or damage flooring.

OPERATION:

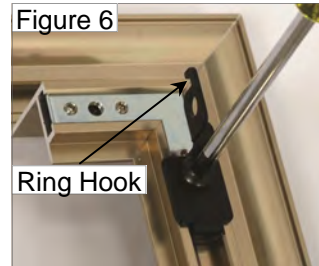
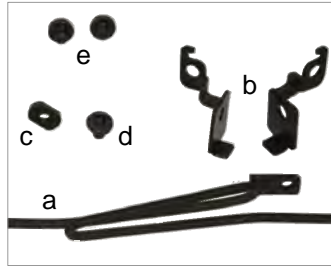
- Legacy ZC Glass Doors are designed to be used with the glass doors open and the screens closed when the fire is burning. You will get the maximum heat from your fireplace with the glass doors open. Whether you use the OEM screens that came with your fireplace or order new screens with your ZC Glass Doors, the screens must be kept closed at all times when a wood fire is burning except when loading or maintaining the fire.
- Build and maintain small to moderate wood fires. Fireplace grates and/or andirons must be properly sized to allow at least 5 inches of clearance between the fire and the ZC Glass Doors. A roaring fire, or any fire allowed to burn too close to the Legacy ZC Glass Doors, can overheat and damage the frame, glass, finish, and/or discolor the metal. Damage caused by overheating of the ZC Glass Doors is considered abuse and is not covered under warranty.
- Never leave the room with both the glass doors and screens open. Under normal operating conditions the glass doors will be open and the screens will be closed. Upon retiring for the evening, or leaving the room for an extended period, the glass doors can be closed to provide maximum spark protection. Before closing the glass doors ensure that the wood fire is under control and of moderate size or smaller. The Legacy ZC Glass Doors are designed with air gaps between the glass panels that will allow for enough air to support combustion and to help to keep the ZC-Fireplace cool. The fireplace flue damper should be left fully open. Once the fire is completely extinguished, close the fireplace flue damper and close the glass doors to minimize heat loss up the chimney.
- Legacy ZC Glass Doors used in combination with Gas Logs must have the glass doors open and the screens closed when the Gas Logs are in operation to ensure adequate air flow to the Gas Logs. The Gas Logs must be properly sized to allow at least 5 inches of clearance between the fire and the Fireplace Enclosure. Unlike a wood fire that modulates heat output, gas logs can produce a lot of heat constantly over an indefinite period of time. Burning Gas Logs with the glass doors closed can overheat the glass doors, the ZC-Fireplace, and/or the Gas Logs and cause damage to any or all of the components. Read and follow all instructions provided by the Gas Log manufacturer.

MAINTENANCE:

- ⚠ CAUTION:** The Legacy ZC Glass Doors and the glass must be at room temperature before cleaning.
- Closing the glass doors to secure a dying fire may result in smoke residue or soot accumulation on the glass. If cleaned regularly this staining can be removed using glass cleaner or a mild household cleaner. Avoid cleaners that contain ammonia. Spray on, let soak for a few minutes, and wipe clean. Repeat as necessary.
 - Heavier, long-term build up may require the use of a glass cleaner specifically formulated for removing wood smoke residue. These glass cleaners are available from your local Stoll Fireplace Dealer. Never use oven cleaner.
 - Stoll uses Anodized or heat resistant Powder Coat finishes on Legacy Fireplace Enclosures. These finishes require only an occasional wipe with a damp cloth to maintain the factory finish. A mild household cleaner may be used if necessary. Do not use cleaners that contain ammonia. Do not use harsh, strong, or abrasive cleaners.
 - Polished metal parts of the enclosure (brass, copper, etc.) are Anodized to prevent tarnishing. Wipe with a damp soft towel or dust cloth only. The use of metal polish or strong cleaners will damage the finish.

OPTIONAL MESH SCREEN KIT INSTRUCTIONS:

Mounting Hardware	
a	1 ea. Curtain Rod
b	2 ea. Rod Bracket
c	1 ea. 1/4-20 Track Nut
d	1 ea. 1/4-20 x 3/8" Screw
e	2 ea. 1/4-20 x 1/4" Screw



- Install the rod brackets **(b)** using 1/4" screws **(e)** into the tapped hole on the vertical leg of corner brackets. **(Figure 6)**
- Install a mesh curtain (with the handles towards center) on each side of the curtain rod **(a)**. **NOTE:** To create a pleated appearance in the mesh curtain, twist each curtain ring one-half turn as it is installed on the curtain rod.
- Insert the curtain rod ends into each rod bracket in turn. **NOTE:** To keep the curtains from sliding to the center, leave the last curtain ring loose until the rod is installed then hang the loose rings on the hooks provided on each Rod Bracket.
- Attach the curtain rod center bracket using a 3/8" screw **(d)** and track nut **(c)**. **(Figure 7)** It may be easier to insert the screw **(d)** through the center bracket, loosely thread on the track nut, and then slip the nut into the frame track. Tighten the screw securely.

Five Year Limited Warranty for Legacy ZC Glass Doors

Stoll Fireplace, Inc. warrants its Legacy ZC Glass Doors to be free from defects in metal materials and/or workmanship, under normal use and conditions of service, for a period of five (5) years, subject to the limitations outlined below. Glass is warranted to be free from defect in materials, under normal use and conditions of service, for a period of one (1) year, subject to the limitations outlined below. This warranty is non-transferable and is extended exclusively for the benefit of the original purchaser beginning on the original date of retail sale. Stoll Fireplace, Inc. will, at its option, repair or replace any part that fails due to a defect in materials or workmanship at no charge (exclusive of freight) subject to the limitations of this warranty.

This warranty covers repair or replacement of parts only and applies exclusively to products purchased for consumer use. This warranty does not cover damage caused by transportation and/or handling or which results from alteration, accident, misuse, abuse, or improper installation. It also makes no warranty as to maximum temperature and stresses which may cause discoloration of metal finishes, distortion of metal parts, and/or glass breakage.

This warranty constitutes the entire warranty with respect to Stoll Fireplace, Inc. and/or its products. Stoll Fireplace, Inc. shall not be liable for consequential or indirect damages which are caused by defects in its product, by its repair or replacement. Stoll Fireplace, Inc. makes no other warranty, expressed or implied, including any warranty of merchantability, or warranty of fitness for a particular purpose. Implied warranties of merchantability and fitness for a particular purpose which may arise under state law are also limited in duration to five years from the original purchase of this product. Some states do not allow such limitations, in which case this limitation may not apply. The consumer may have other rights that vary from state to state.

If, during the warranty period, a product covered under this warranty proves to be defective in material or workmanship, a claim for warranty service should be made through your authorized Stoll Fireplace Dealer. Proof of purchase will be required. The authorized dealer will procure replacement parts and/or contact Stoll Fireplace, Inc. if additional service is deemed necessary.

If you have questions about your product or the terms of your warranty please contact:
Stoll Fireplace, Inc. ~ 153 Hwy 201 ~ Abbeville, SC 29620

When applying for warranty replacement, or ordering replacement parts, always specify the type of product, the color, the height, and width. Describe the damaged or defective part in detail. Please provide digital pictures if possible.