



VENT-FREE FIREPLACES

Vail VFP24FP

Spec Sheet



ACTUAL DIMENSIONS

22 5/8" W x 26 1/2" H x 11" D

INCLUDES

- Outer Frame, Hood and Louvers in Matte Black
- Ceramic Fiber log set
- Slope Glaze Burner

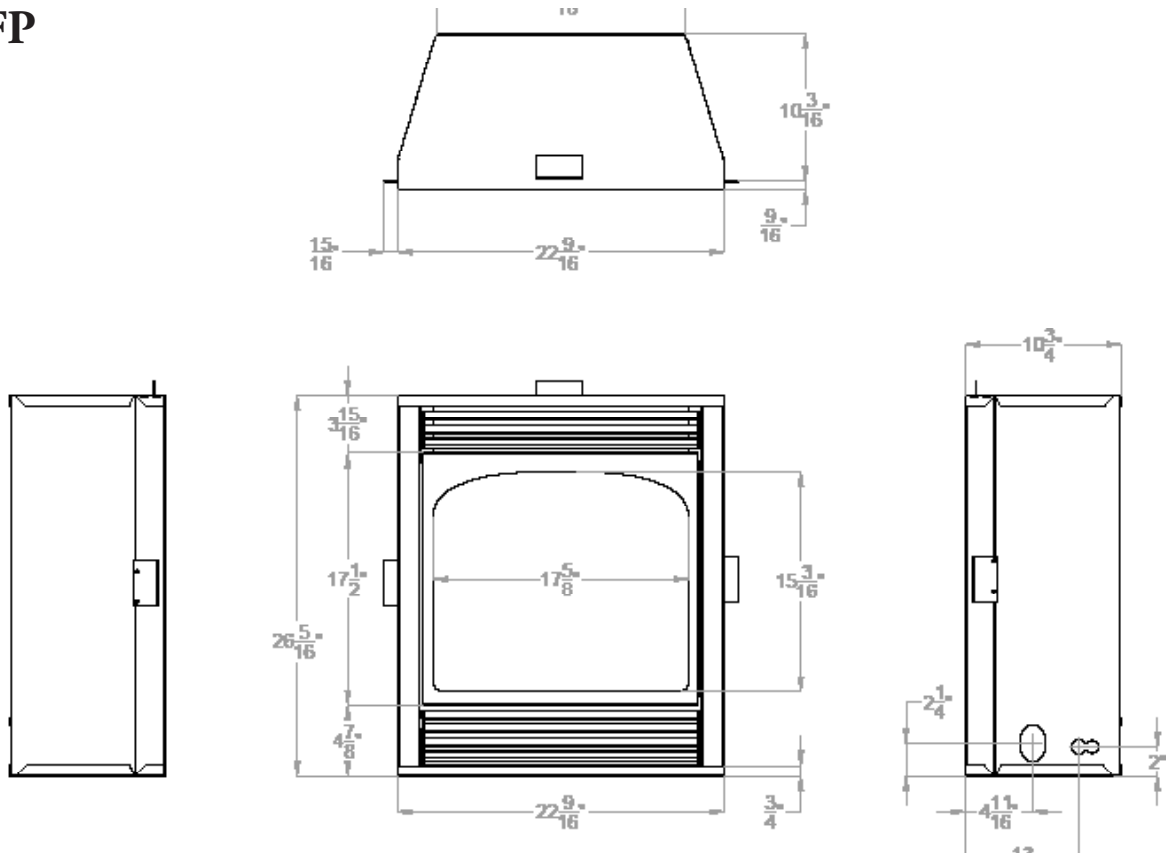
TECHNICAL INFORMATION

- Weight: 51 lbs.
- 20,000 BTU
- Ignition System: Intermittent Pilot, Millivolt, Thermostat

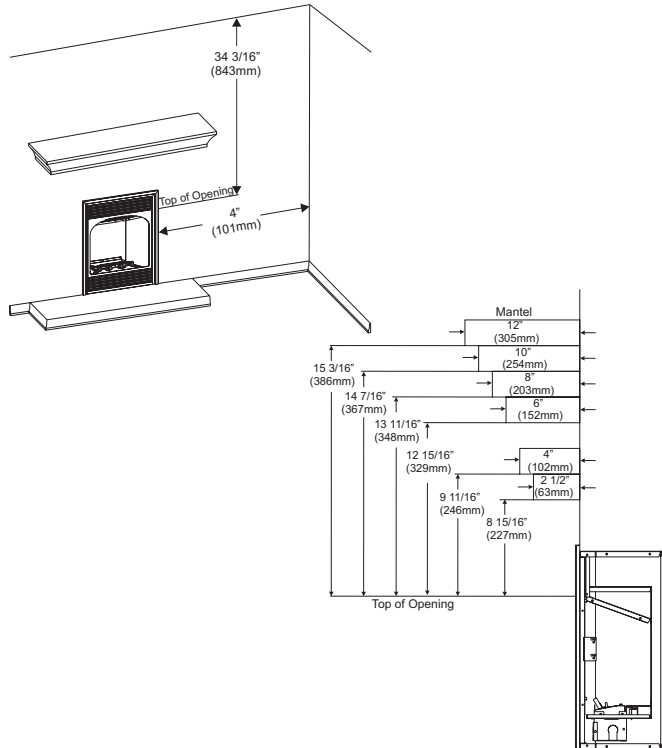
FIELD INSTALLED ACCESSORIES

- Liners: Aged Brick, Traditional Brick
- Blower
- Platinum Embers
- Outer Steel Frame, Hammered Pewter
- Standard or Corner Mantel

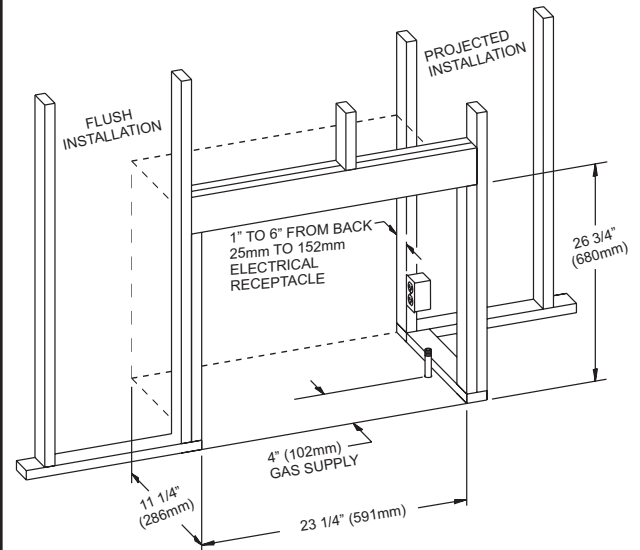
VFP24FP



Clearance to Combustibles



Rough Opening for Installing in Wall



Empire is committed to continuous product improvement; specifications are subject to change without notice. Dimensions in this brochure are approximate; read and follow the framing dimensions in the owners manual supplied with your Empire product. Flame size, shape, and color will vary from photos. Our mantels feature natural veneers and hand-rubbed finishes – wood grain and color will vary. Adjust light levels and use "natural light" incandescent bulbs to enhance the dramatic look for your wooden mantel.

Member of the following industry associations:



This appliance is design-certified to the ANSI standard by:



SINCE 1932

Empire Comfort Systems Inc.
918 Freeburg Ave.
Belleville, IL 62220-2623
info@empirecomfort.com
01/18

The Empire Comfort Systems and White Mountain Hearth names and logos are registered U.S. trademarks.