

Vented Gas Logs

Radiant Heat Series

Radiant Heat logs redefine the role of a vented gas log set. Our revolutionary molding process captures all the detail you expect from Hargrove in ceramic fiber with 3x's the heat of a standard refractory concrete vented gas log set.



Aspen Timbers

- Available in 4 sizes 21"-36"
- Single Side and See-Thru Sets Available
- Works with E-Burner, H-Burner, HC Burner and System 4 Burner



Canyon Timbers

- Available in 4 sizes 21"-36"
- Single Side and See-Thru Sets Available
- Works with E-Burner, H-Burner, HC Burner and System 4 Burner



Cross Timbers

- Available in 4 sizes 21"-36"
- Single Side and See-Thru Sets Available
- Works with E-Burner, H-Burner, HC Burner and System 4 Burner



Rustic Timbers

- Available in 4 sizes 21"-36"
- Single Side and See-Thru Sets Available
- Works with E-Burner, H-Burner, HC Burner and System 4 Burner



Woodland Timbers

- Available in 4 sizes 21"-36"
- Single Side and See-Thru Sets Available
- Works with E-Burner, H-Burner, HC Burner and System 4 Burner

Charred Series



Blazing Pecan

- Available in 4 sizes 18"-30"
- Single Side Sets Available
- Works with E-Burner, H-Burner, HC Burner and System 4 Burner



Inferno Series

- Available in 4 sizes 18"-30"
- Single Side and See-Thru Sets Available
- Works with E-Burner, H-Burner, HC Burner and System 4 Burner



Magnificent Inferno

- Available in 4 sizes 21"-36"
- Single Side and See-Thru Sets Available
- Works with E-Burner, H-Burner, HC Burner and System 4 Burner



Supreme Ponderosa

- Available in 6 sizes 24"-60"
- Single Side and See-Thru Sets Available
- Works with E-Burner, H-Burner, HC Burner and System 4 Burner



Twilight Inferno

- Available in 4 sizes 21"-36"
- Single Side Sets Available
- Works with E-Burner, H-Burner, HC Burner and System 4 Burner

Contemporary Series



Cannon Balls

- Available in 3 sizes 18"-30"
- All Sets are See-Thru or Single Side compatible
- Utilizes Full-Pan Burner System



Driftwood

- Available in 3 sizes 18"-30"
- All Sets are See-Thru or Single Side compatible
- Utilizes Full-Pan Burner System



Blue Glass

- Available in 3 sizes 18"-30"
- All Sets are See-Thru or Single Side compatible
- Utilizes Full-Pan Burner System



River Stones

- Available in 3 sizes 18"-30"
- All Sets are See-Thru or Single Side compatible
- Utilizes Full-Pan Burner System

Coal Baskets



Coal Basket with Coals

- Designed for small fireplaces (19" width)
- Hides valve controls



Coal Basket with Logs

- Designed for small fireplaces (19" width)
- Hides valve controls

Fresh Cut Series



Classic Oak

- Available in 5 sizes 15”-30”
- Single Side and See-Thru Sets Available
- Works with E-Burner, H-Burner, HC Burner and System 4 Burner



Driftwood

- Available in 3 sizes 18”-28”
- Single Side and See-Thru Sets Available
- Works with E-Burner, H-Burner, HC Burner and System 4 Burner



Grand Oak

- Available in 8 sizes 18”-48”
- Single Side and See-Thru Sets Available
- Works with E-Burner, H-Burner, HC Burner and System 4 Burner



Hargrove Select

- Available in 9 sizes 18”-66”
- Single Side and See-Thru Sets Available
- Works with E-Burner, H-Burner, HC Burner and System 4 Burner



Mountain Timber

- Available in 3 sizes 21”-30”
- Single Side Sets Available
- Works with E-Burner, H-Burner, HC Burner and System 4 Burner



Western Pine

- Available in 8 sizes 15”-48”
- Single Side and See-Thru Sets Available
- Works with E-Burner, H-Burner, HC Burner and System 4 Burner

Large Series



Kodiak Char Double Stack

- Available in 6 sizes 21”-60”
- Available in Triple Stack (30”-60”)
- Utilizes Double Stack Burner



Kodiak Split Double Stack

- Available in 6 sizes 21”-60”
- Available in Triple Stack (30”-60”)
- Utilizes Double Stack Burner



Kodiak Timbers

- Available in 4 sizes 21”-36”
- Single Side Sets available
- Utilizes Double Stack Burner



Mountain Timber

- Available in 6 sizes 30”-60”
- Utilizes Ember Supreme Burner



Summit Oak

- Available in 3 sizes 36”-48”
- Single Side Sets Available
- Utilizes Summit Oak Burner

Pinnacle Series



Sierra Stack

- Available in 4 sizes 15"-30"
- Single Side Sets available
- Utilizes Pinnacle Burner system



Everest Stack

- Available in 3 sizes 18"-30"
- Single Side Sets available
- Utilizes Pinnacle Burner system



Olympia Stack

- Available in 3 sizes 18"-30"
- Single Side Sets available
- Utilizes Pinnacle Burner system

Accessory Options



Bark Chip Kit



Charred Chip Kit



Combo Kit



Fiber Char Chunk Kit



Twig Kit



Pinecones

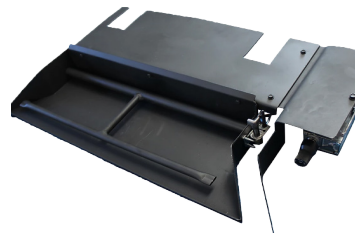
Burner Options



H-Burner



E-Burner



HC Burner



System 4 Burner

Available with Manual Safety Pilot, On/Off Remote, Variable Remote, Millivolt, and Electronic Ignition