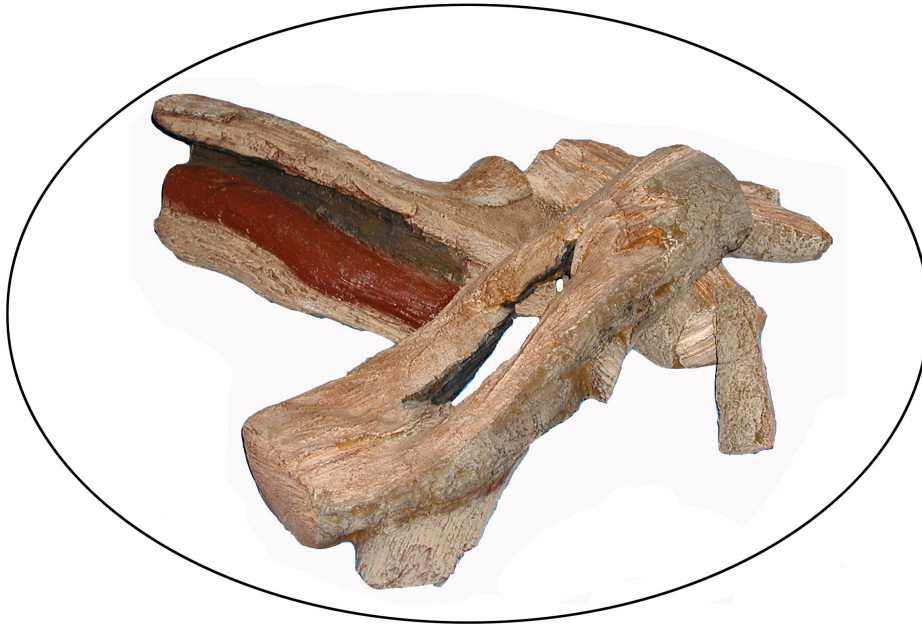


Wilderness Split

Outdoor Firepit Stack

30" diameter log stack – Step 1

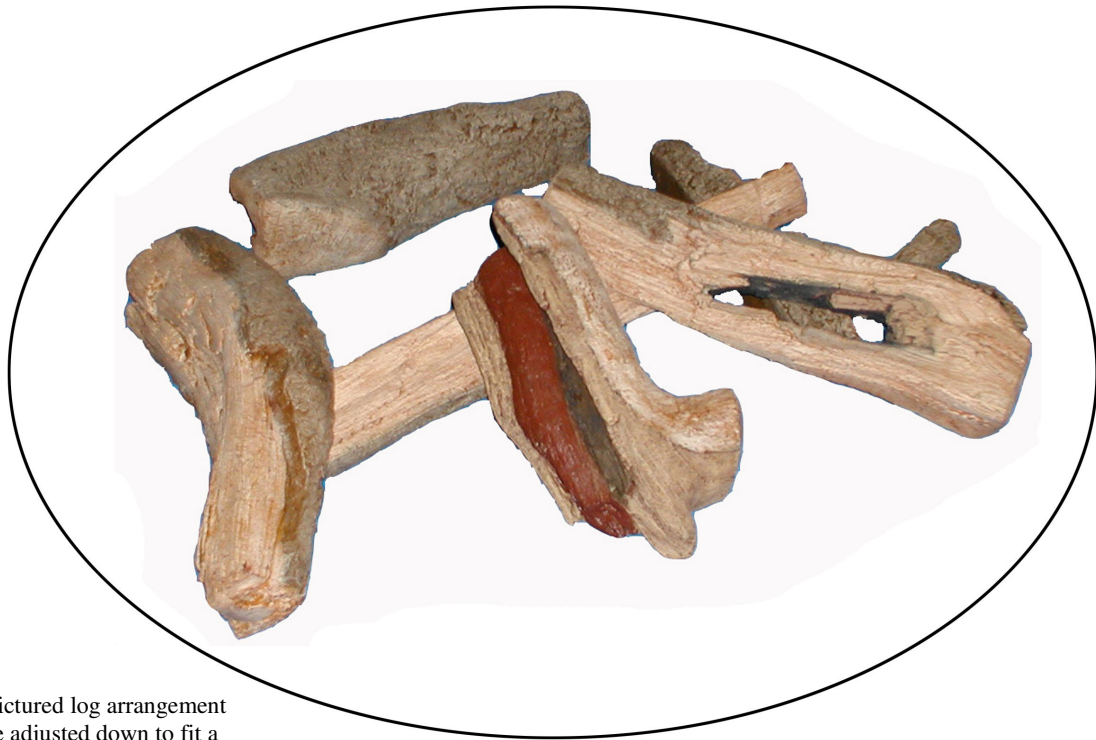


- The pictured log arrangement can be adjusted down to fit a smaller 20" diameter firepit or up to fit a larger 40" diameter firepit.
- The arrangement shown is a suggested stack. The logs can be stacked in a different pattern if desired.

30" diameter log stack – Step 2



50" diameter log stack – Step 1



- The pictured log arrangement can be adjusted down to fit a smaller 40" diameter firepit or up to fit a larger 60" diameter firepit.
- The arrangement shown is a suggested stack. The logs can be stacked in a different pattern if desired.

50" diameter log stack – Step 2



WILDERNESS SPLIT FIREPIT STACK INDIVIDUAL LOG DIAGRAM

1520MT 	3308MT 
3215MT 	3312MT 
3315MT 	3317MT 
3319MT 	3321MT 
3322MT 	3324MT 
3325MT 	3330MT 

LIMITED WARRANTY

Outdoor Refractory Logs

Hargrove gas logs carry a one-year warranty against any manufactured defect or breakage when installed outdoors. A replacement will be available from the dealer at which the logs were purchased. This warranty does not cover breakage caused by excessive handling once installed and fired.

Buyer shall notify Hargrove Mfg Corp. of any defect covered by this warranty no later than thirty (30) days after defect is discovered. Failure to provide notice within thirty (30) days shall void the limited warranty.

WHAT IS NOT COVERED

1. Removal and reinstallation costs.
2. Labor costs for replacement or repairs.
3. Transportation or shipping cost.
4. The cost of a service call to diagnose trouble.
5. Painted Surfaces.
6. Damage or defect caused by improper installation, accident, misuse, abuse, alteration, or authorized service technician.

LIMITATIONS AND EXCLUSIONS

1. No one has authority to add to or vary this limited warranty, or to create for Hargrove Manufacturing Corporation any other obligation or liability in connection with this appliance.
2. Any implied warranty applicable to this appliance is limited in duration to the same period of time as this written

Warranty. Some states do not allow limitations on how long an implied warranty lasts, so the above limitations may not apply to you.

3. HARGROVE MANUFACTURING CORPORATION WILL NOT BE LIABLE FOR INCIDENTAL, CONSEQUENTIAL, SPECIAL OR CONTINGENT DAMAGES YOU MIGHT SUFFER AS A RESULT OF A CLAIM UNDER THIS WRITTEN WARRANTY OR ANY IMPLIED WARRANTY. Some states do not allow the exclusion or limitation of incidental or consequential damages, so the above limitations or exclusion may not apply to you.

4. This warranty applies only to the original purchaser and may not be transferred or assigned.
5. If you cannot verify the purchase date of the appliance, the warranty period will begin on the date of which the appliance was manufactured.
6. Replacement or repair parts are warranted for the remaining period of the original part warranty. Warranty parts must be obtained through authorized dealers of this product who will provide original factory replacement parts. Failure to use original factory replacement parts voids this warranty.
7. The maximum liability of Hargrove Mfg Corp. in connection with this limited warranty shall not in any case exceed the contract price paid for the product claimed to be defective or unsuitable.
8. Purchaser or user agrees to hold Hargrove Mfg Corp. harmless from any and all claims by the buyer as a result of injury or damage to an ultimate user or other person caused by the product sold herein by the seller to the buyer, whether the injury or damage results from the assembly, installation, operation, shipment, storage, or manufacture of this product. Hargrove Mfg Corp. makes no warranties, expressed or implied, other than those expressly stated herein.

This warranty gives you specific legal rights, and you may also have other rights, which vary from state to state.

**To register your Hargrove product, please visit our website at
<http://www.hargrovegaslogs.com/reg.htm>.**

CONTACT INFO: Hargrove Manufacturing Corp. Tele: (800) 725-4166