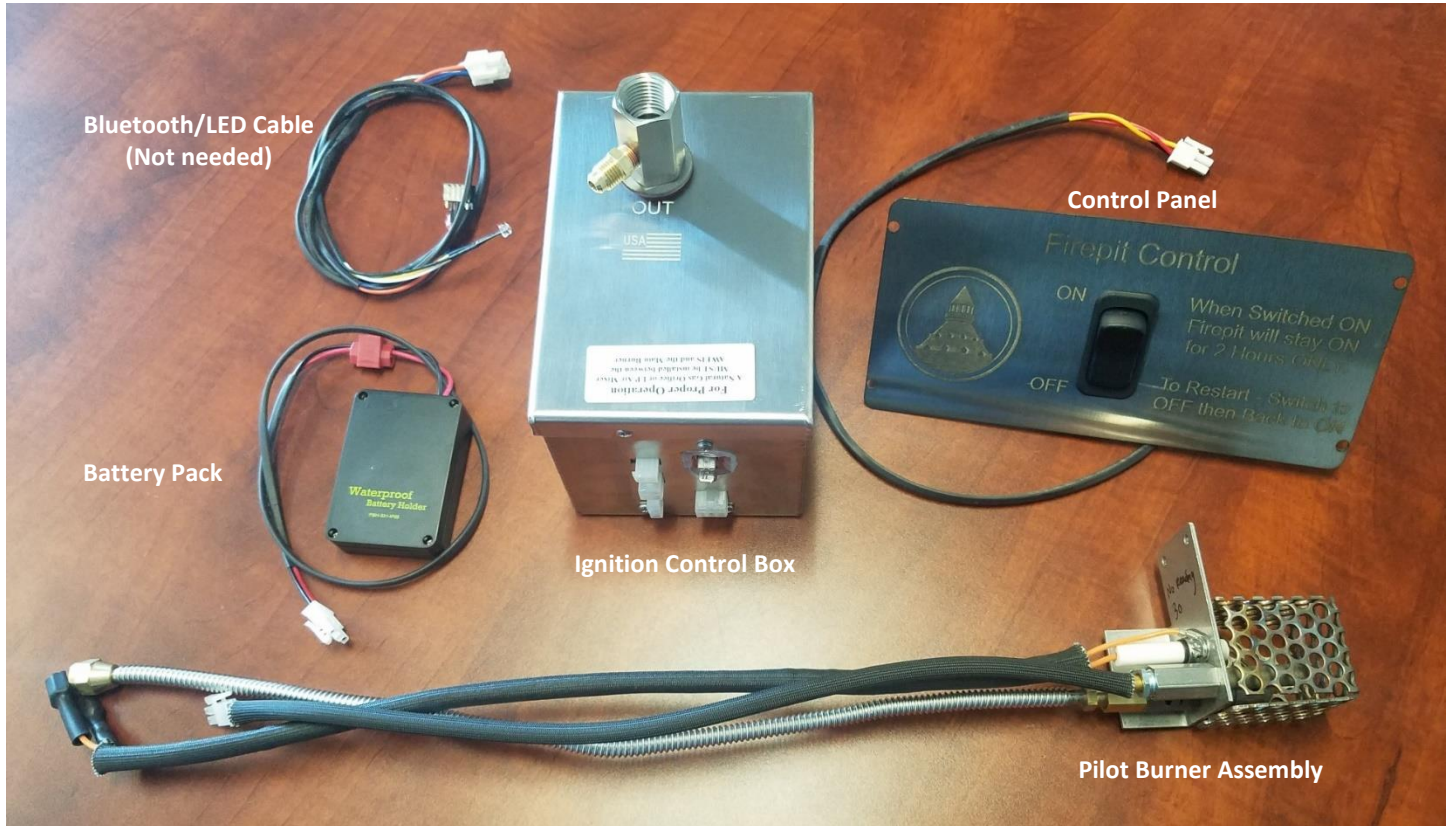


Install Instructions for Battery System

Below are the Components shipped with the Battery System

Not shown are the Round Flat Burner Pan and 12" Spiral Burner

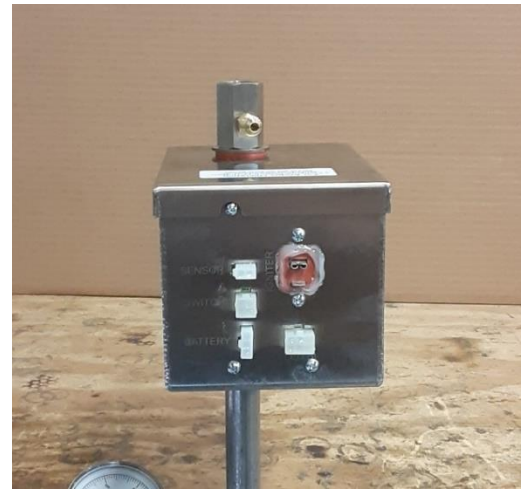


Step 1: Remove the Existing Electronic Ignition Systems

Step 2: Install the Control Panel in the opening on the side of the Firepits. The 4 holes in the Control Panel plate should line up with the existing holes in the metal frame in the opening on the side of the Firepits. Use the existing screws.



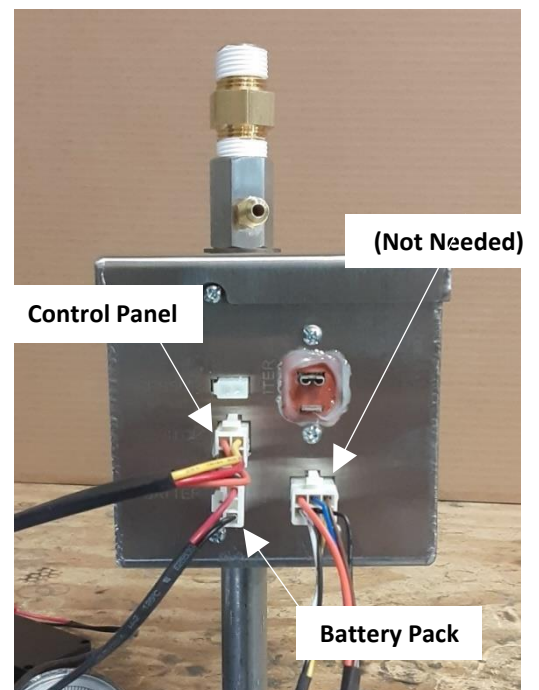
Step 3: Apply pipe dope to the gas line inside the firepit and install the Ignition Control Box onto the gas line.



Step 4: Install the Brass Natural Gas orifice in the outlet of the Ignition Control Box.



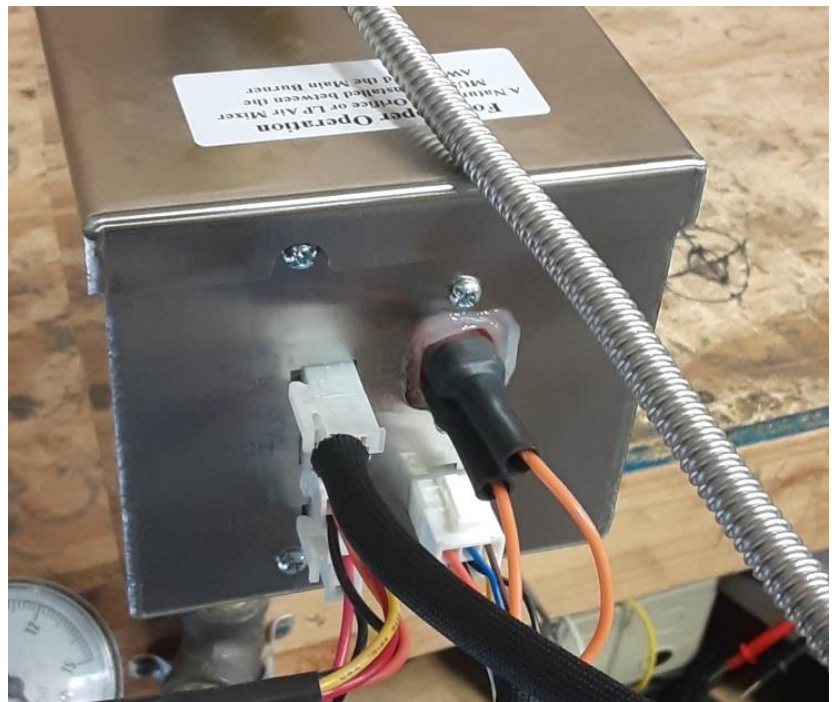
Step 5: Plug the Battery Pack and Control Panel into the receptacles on the front of the Ignition Control Box.



Step 6: Install the Pilot Burner Assembly as shown at right



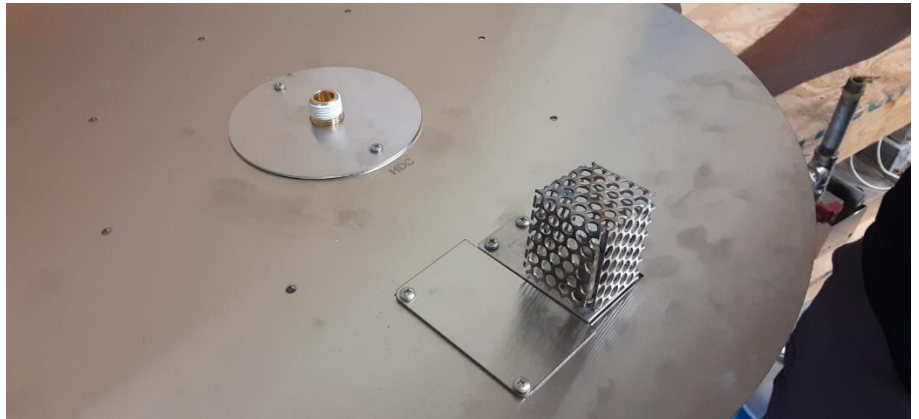
Note: At right is a close-up view of the electrical connections for the Pilot Burner to the front of the Ignition Control Box



Step 7: Slide the Pilot Burner up through the "L" shaped opening in the Round Flat Burner Pan and secure it to the pan as shown in the photo at right.



Step 8: There is a rectangular shaped plate should have been included with the battery system. Install the plate in the opening to the left side of the Pilot Burner as shown in the photo at right.



Step 9: Install the Spiral Burner as shown in the photo at right.



Complete the Install by adding the Lava Rock Media. When the media is installed correctly you should not be able to see the Pilot Burner unless you look very carefully as you see in the photo at right.

