

# Repair Guide for Symmetry XT 3.0 Series



# Content

- Replacing the LED light
- Replacing the flicker motor
- Replacing the heating element
- Replacing the PCB board
- Replacing the signal receiver
- Replacing the canopy light
- Replacing the touch panel
- Replacing the Wi-Fi card

# Replacing the LED Tray Lights

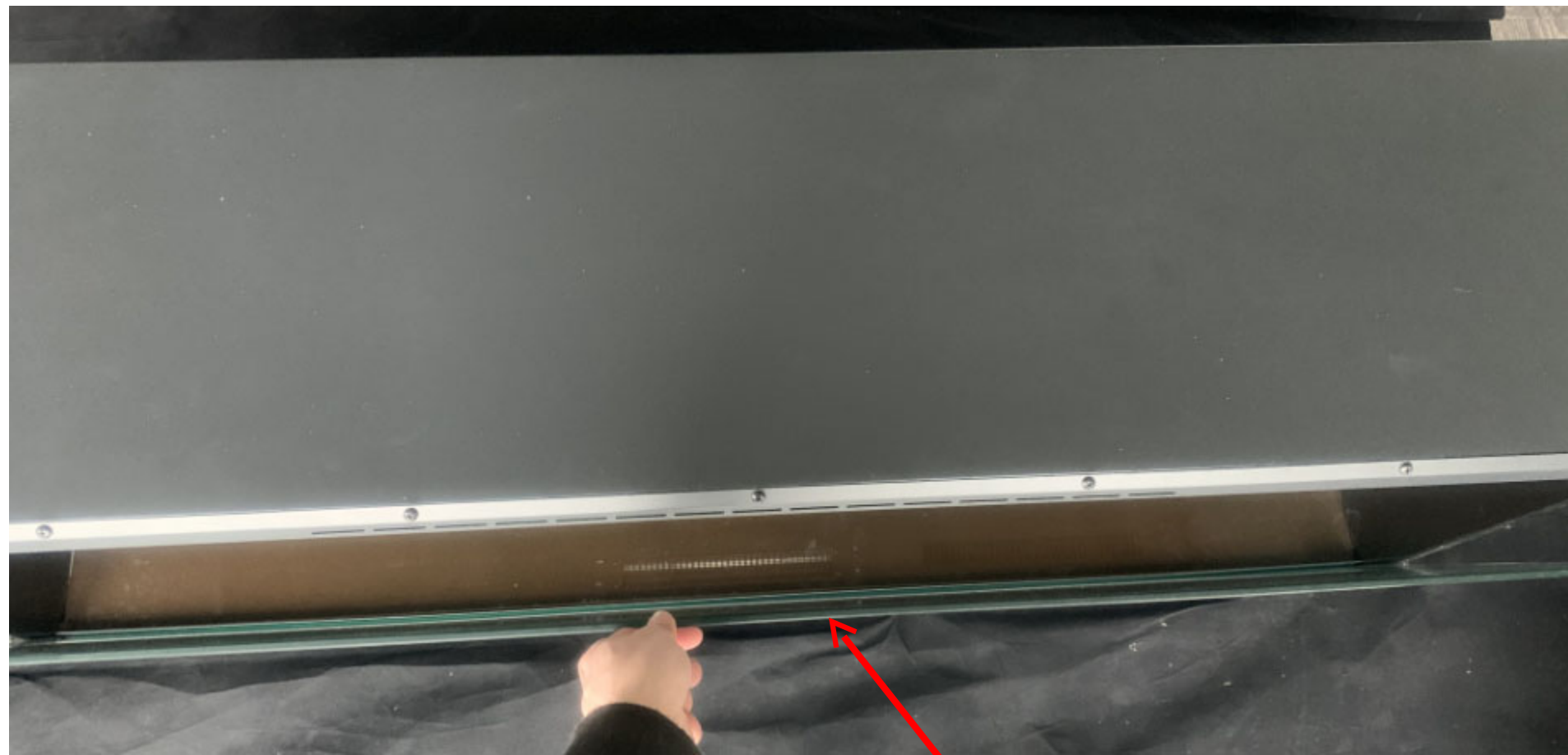


**Step 1** To remove the trim, remove the screws circled in red



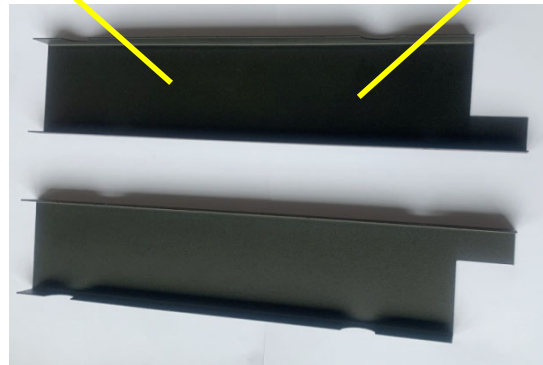
Note that there are magnetic stones securing the bottom of the trim to the fireplace

**Step 2** After the trim's been removed, remove the front glass panel.



Front glass panel

**Step 3** Remove the steel panels holding the glass tray by removing the screws circled in red



The steel panels



# Step 4

To remove the tray glass panel, lift one end upwards.



The tray lights are below the glass panel.



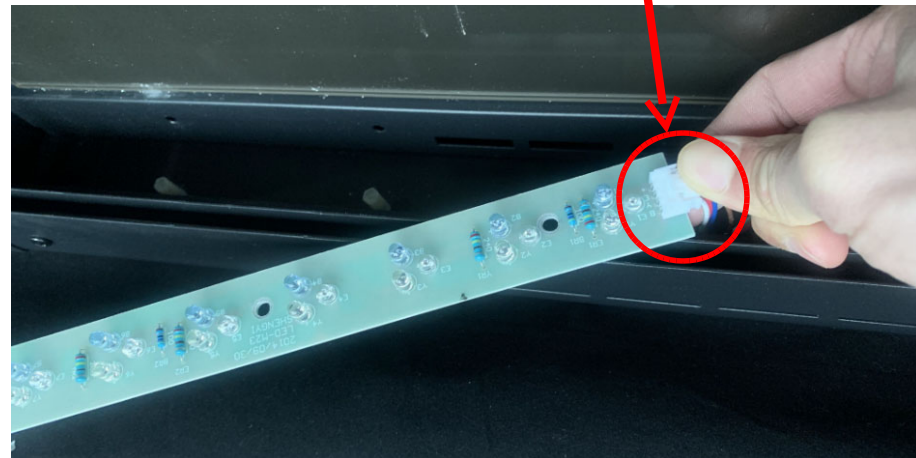


# Step 5

A new LED strip can be installed by unbuckling the hooks that hold the failed one, unplugging and replacing it



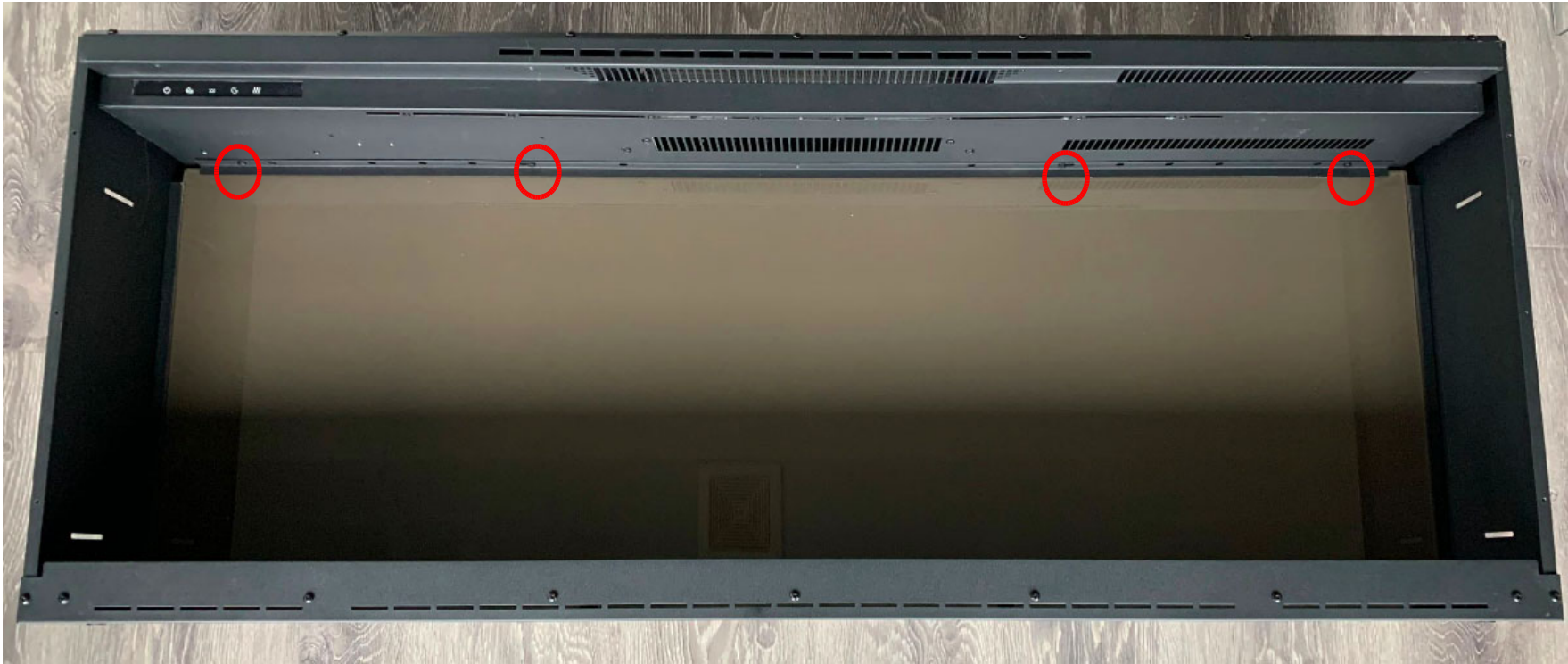
Unbuckle



Unplug

# Replacing the LED flame light

You arrive here after following Steps 1 to 4 in Replacing the LED Tray Lights



**Step 1** The steel bar fixing the back glass must be removed by unscrewing the screws circled in red. The back glass can then be removed

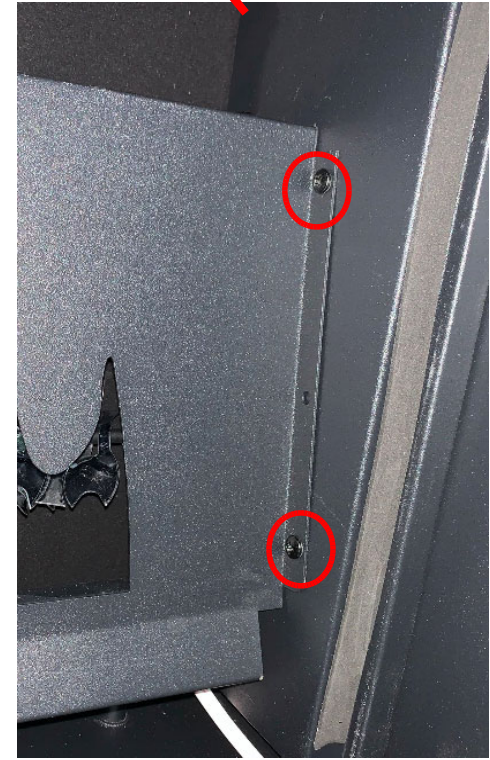


Zoomed View

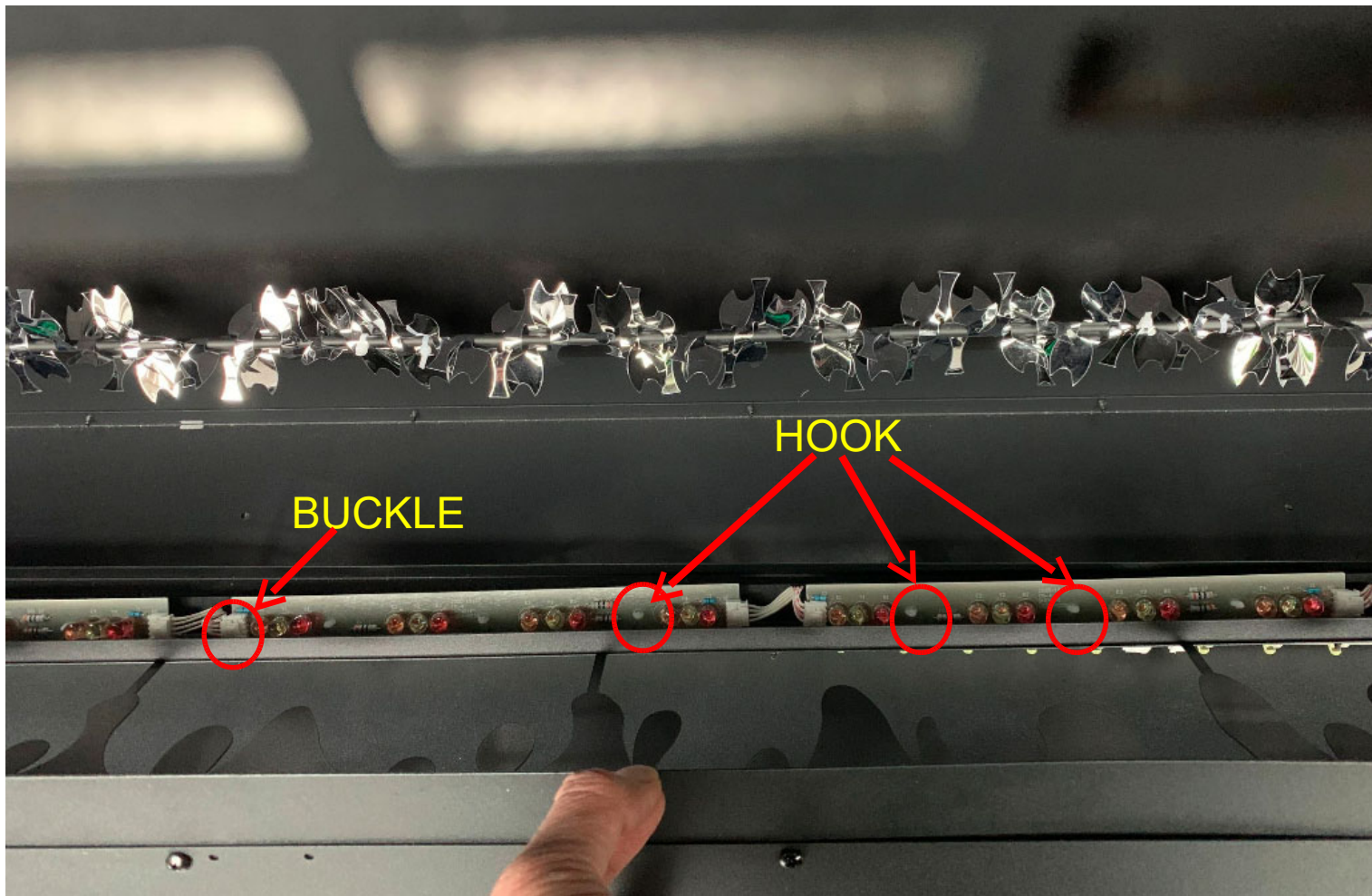
Zoomed View

## Step 2

Simply undo the screws circled in red  
remove the flame stencil



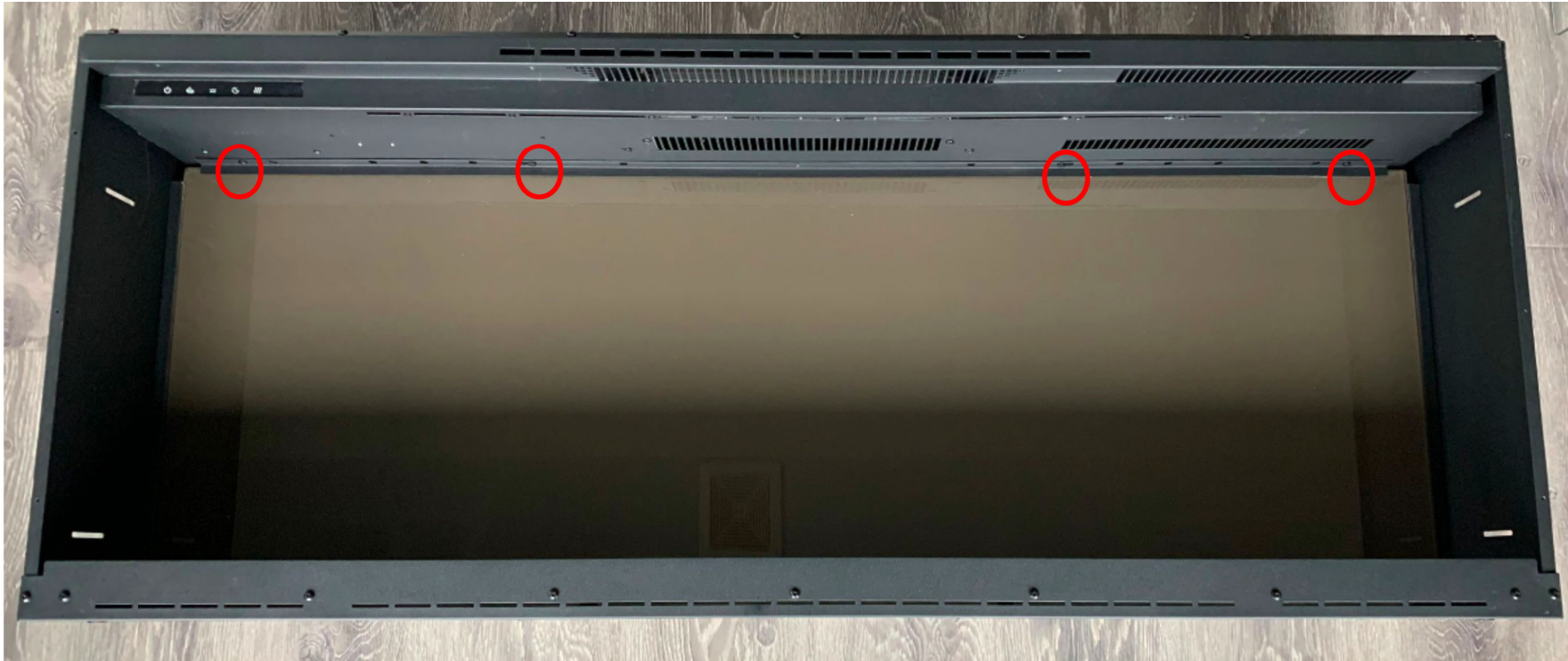




**Step 3** The defective LED strip must be removed from the hooks and the buckle must be unplugged to replace it

# Replacing the flicker motor

You arrive here after following Step 1 to 4 in Replacing the LED Tray Lights.



**Step 1** The steel bar fixing the back glass must be removed by unscrewing the screws circled in red. The back glass can then be removed



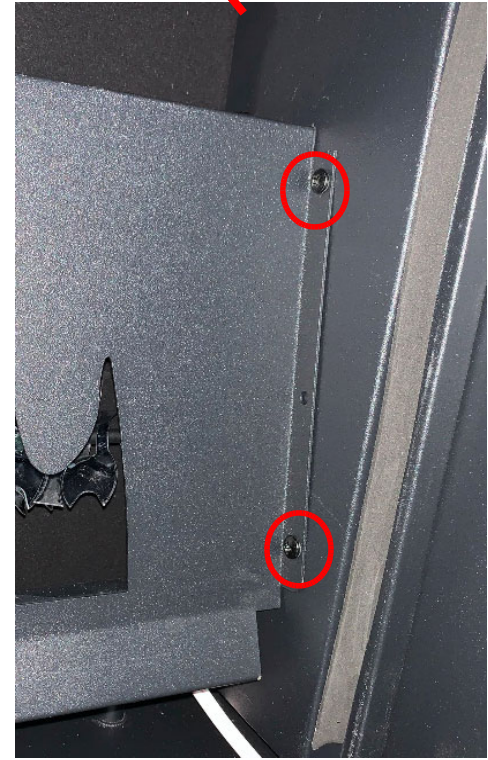


Zoomed View

Zoomed View

## Step 2

Simply undo the screws circled in red to remove the flame stencil

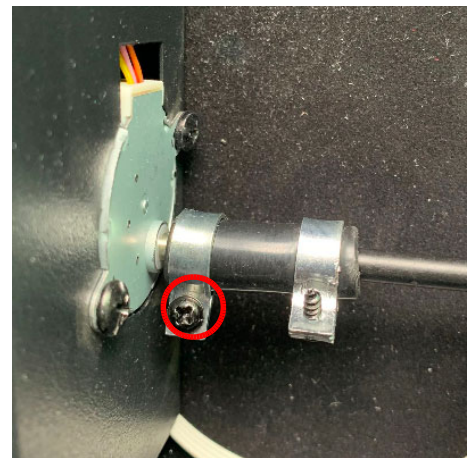




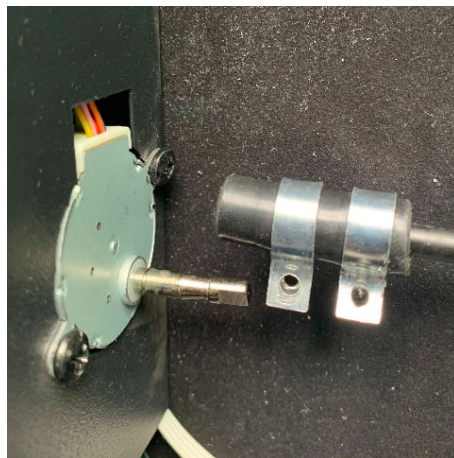
On the left side is the flame motor that appears after the flame stencil has been removed.



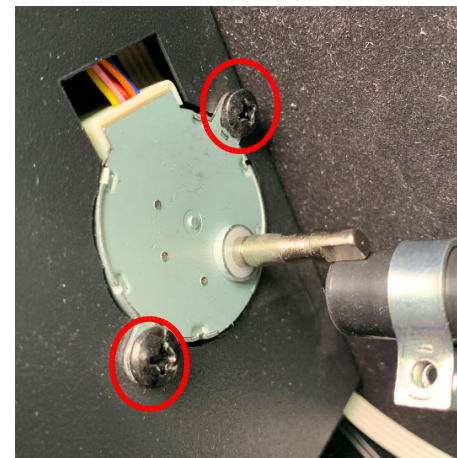
# Step 3



Remove the screw

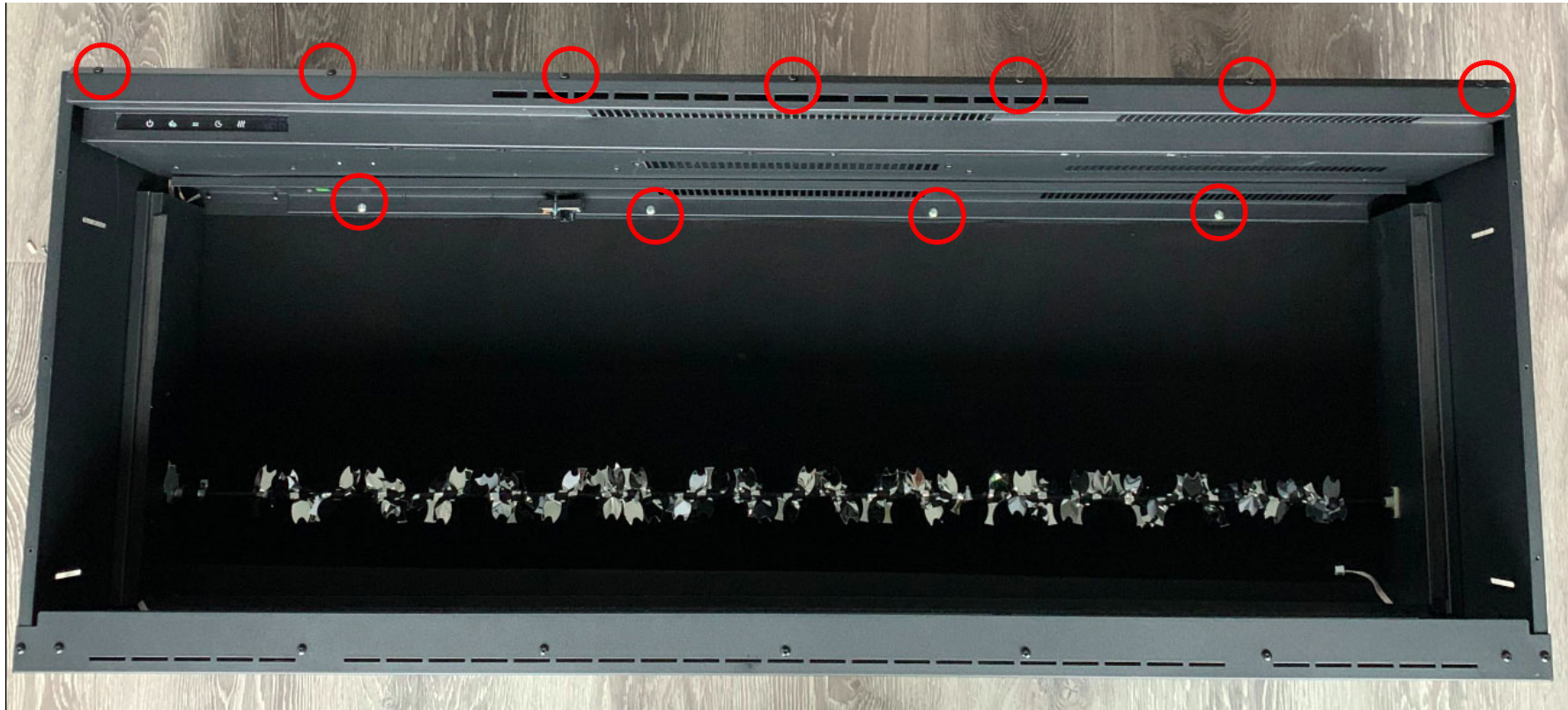


Disconnect the motor from the rod



Remove the screws to take off the motor

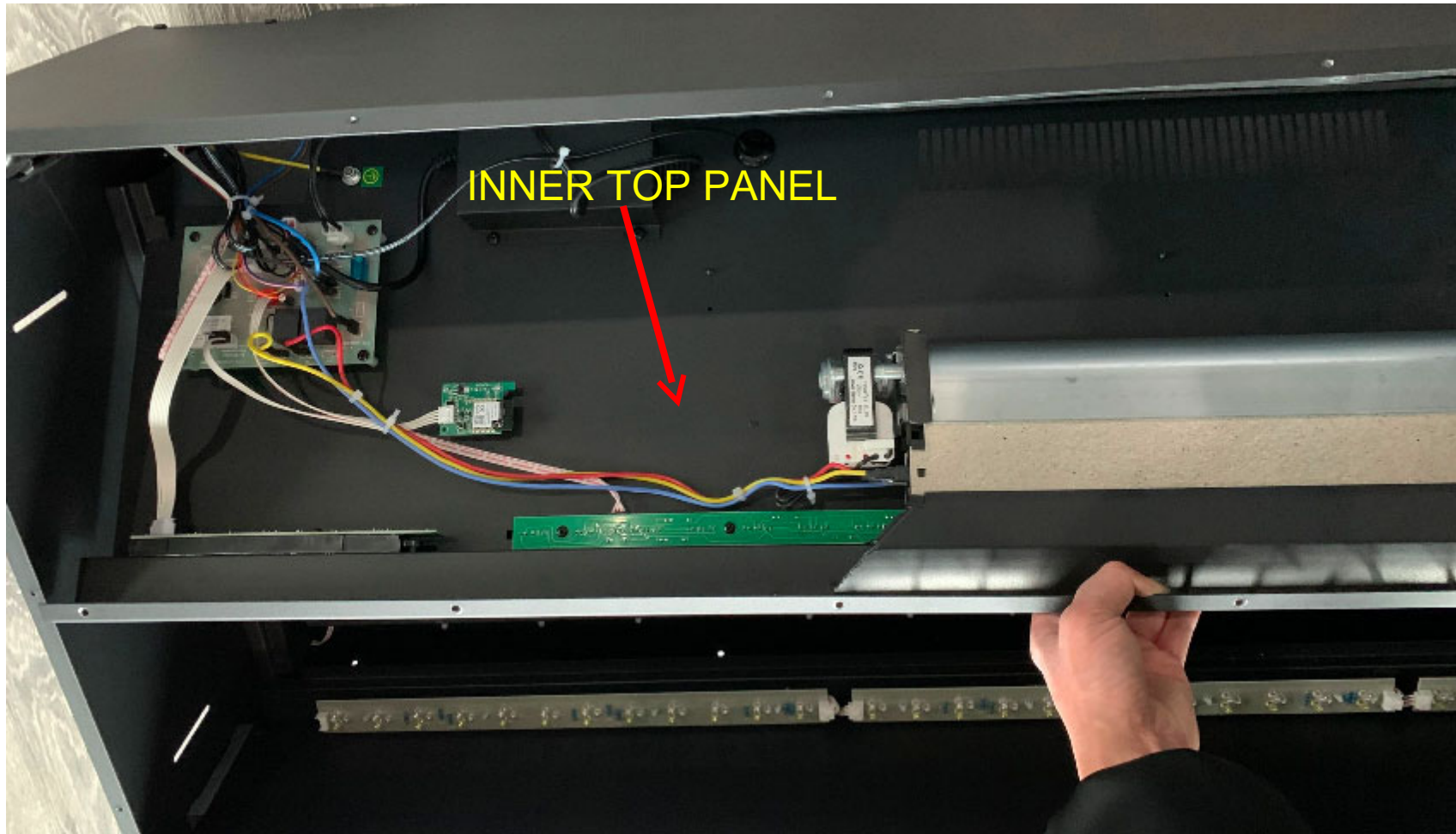
**Step 4** Remove the inner top panel by unscrewing the screws circled in red.



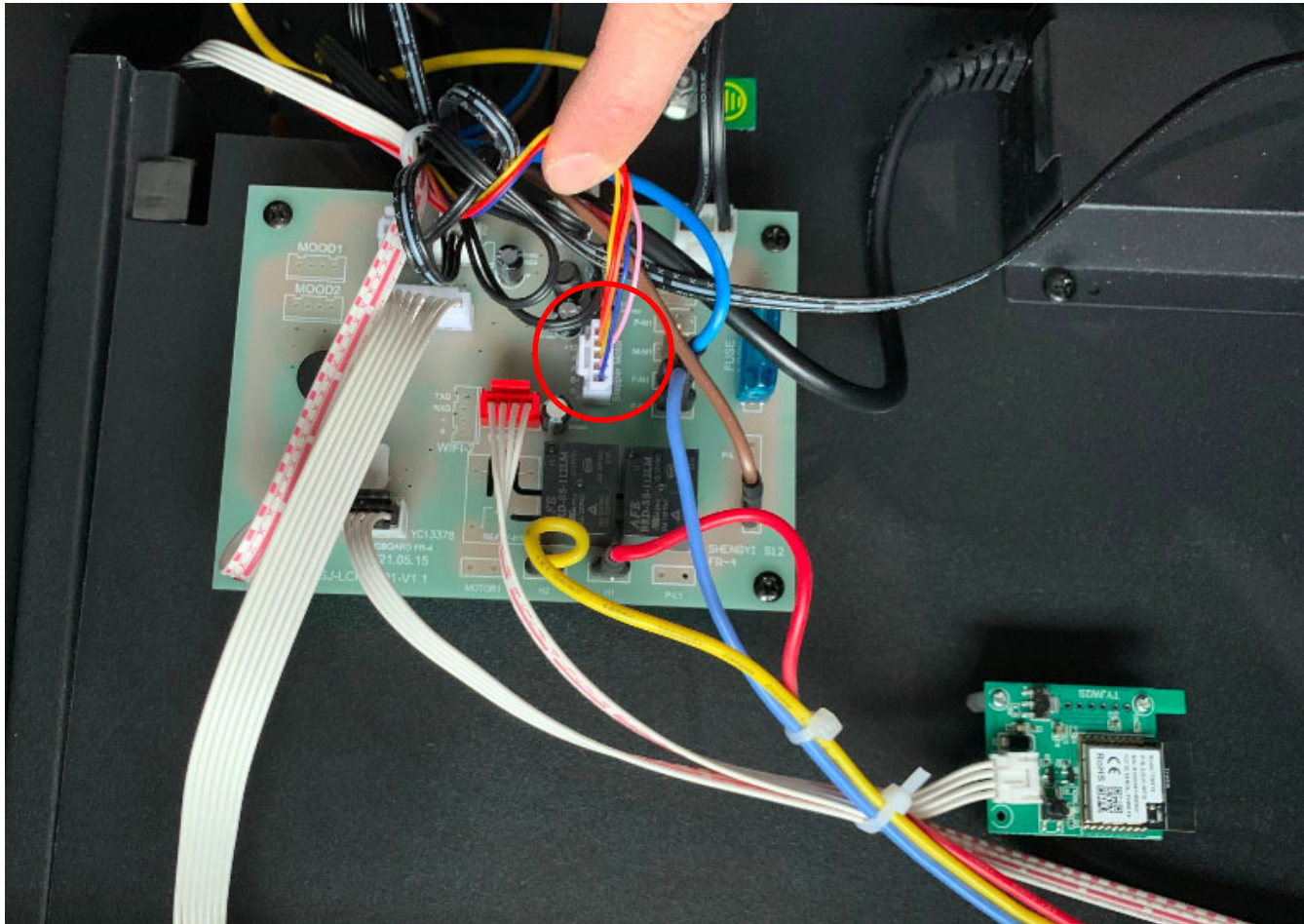


# Step 5

Pull down the inner top panel.

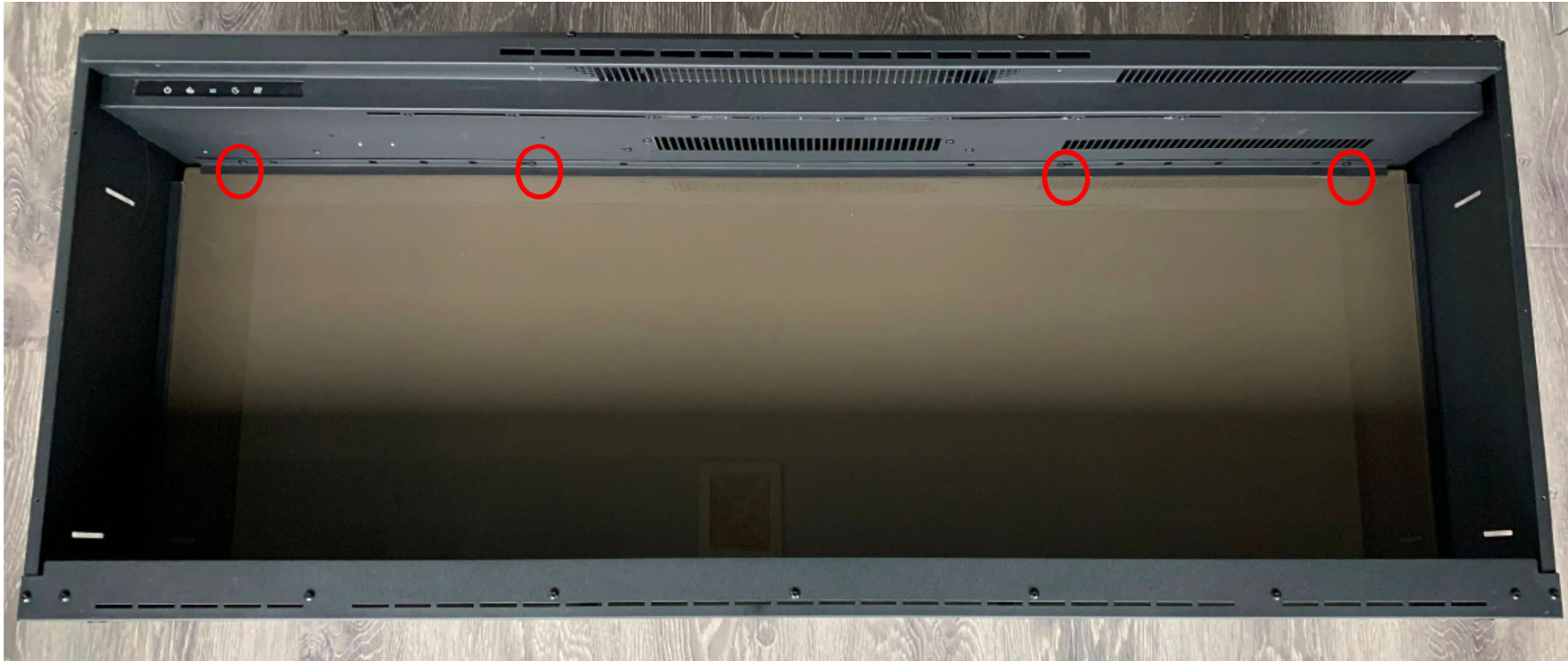


**Step 5** Unplug the flicker motor from the circuit board and replace it with a new one.



# Replace the heating element

You arrive here after following Step 1 to 4 in Replacing the LED Tray Lights.



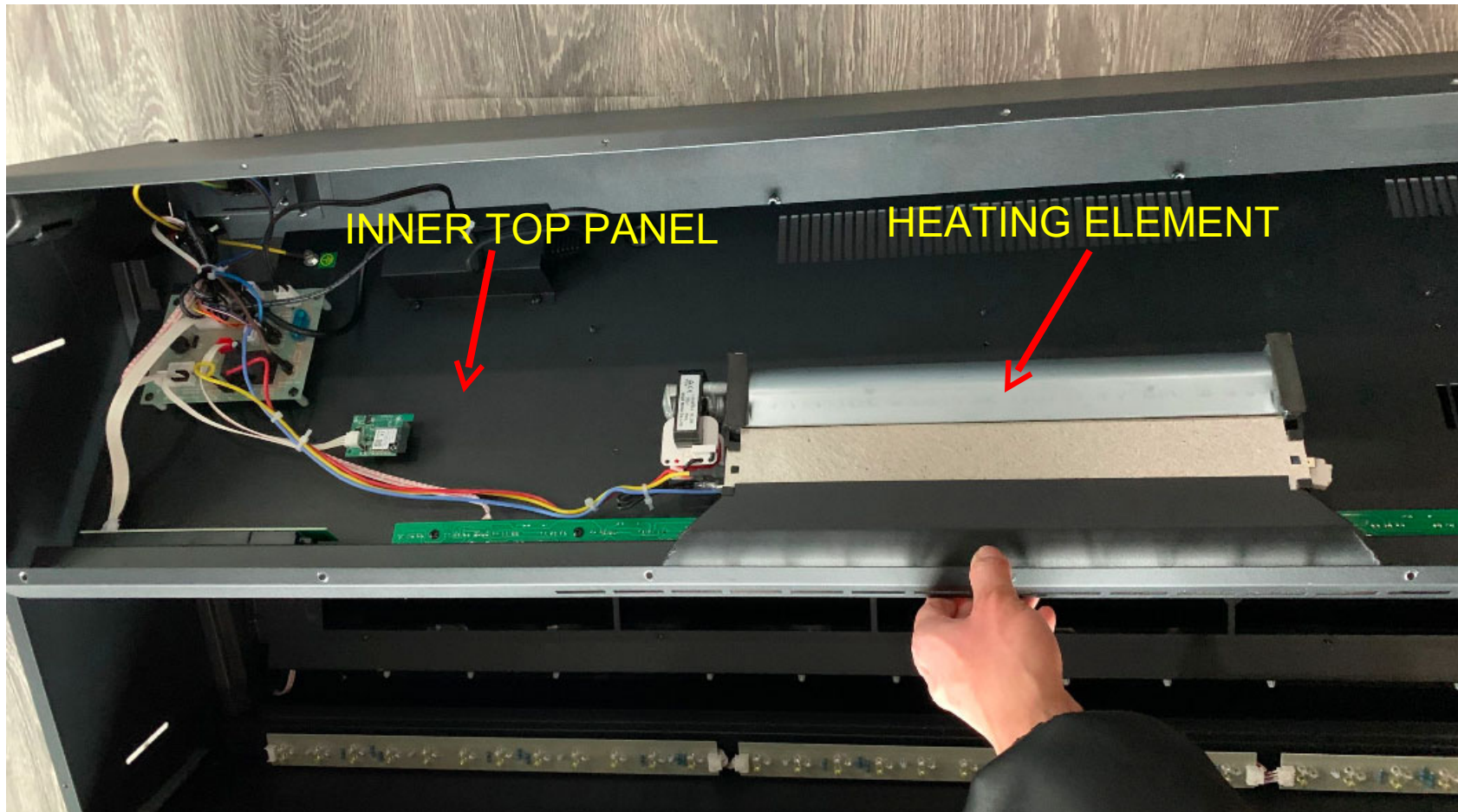
**Step 1** Once the steel bar supporting the back glass has been removed, remove the screws circled in red and remove the glass from its mounting .



**Step 2** Remove the screws circled in red to take off the inner top panel.

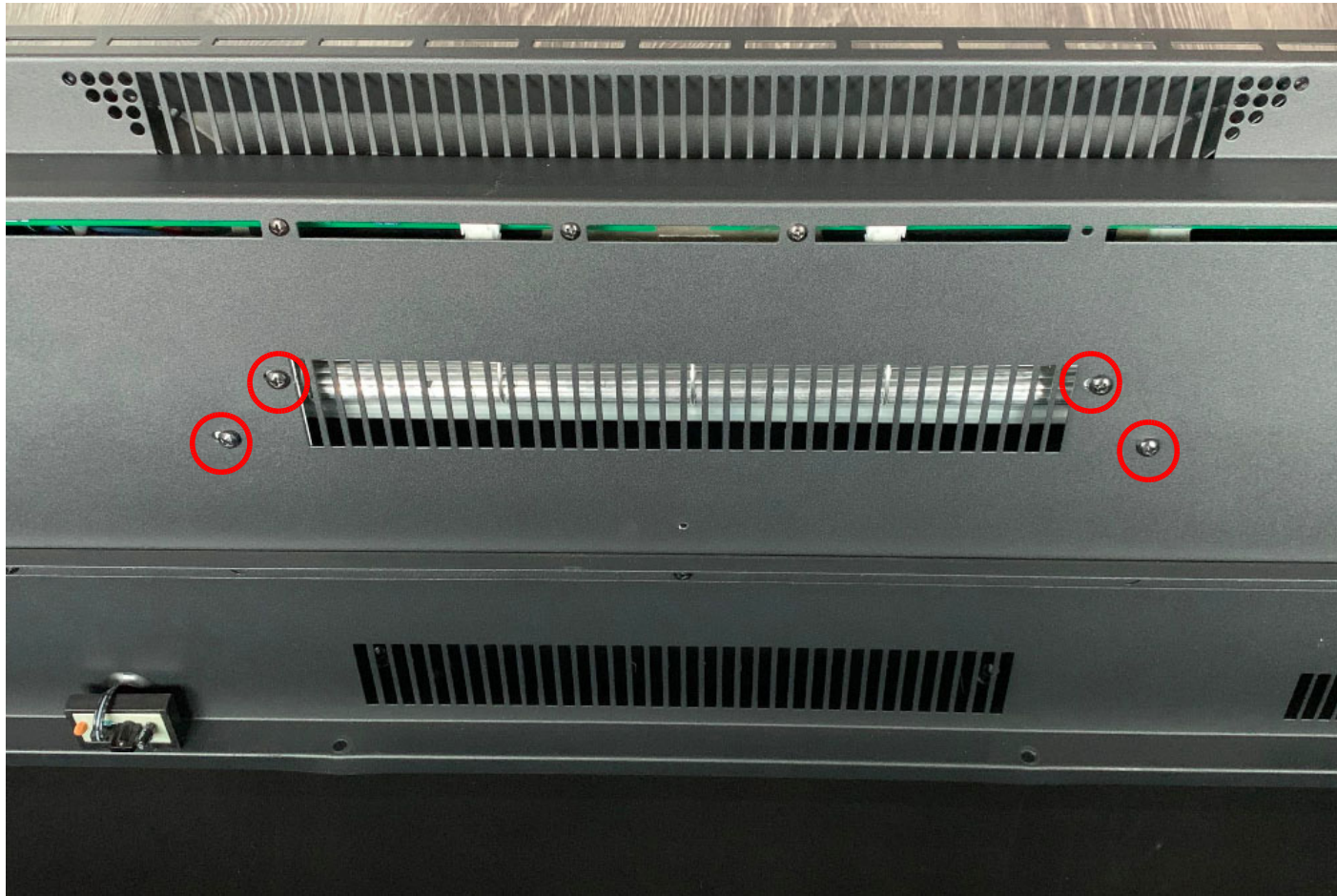


The inner top panel holds the heating element, circuit board, signal receiver, and WiFi card



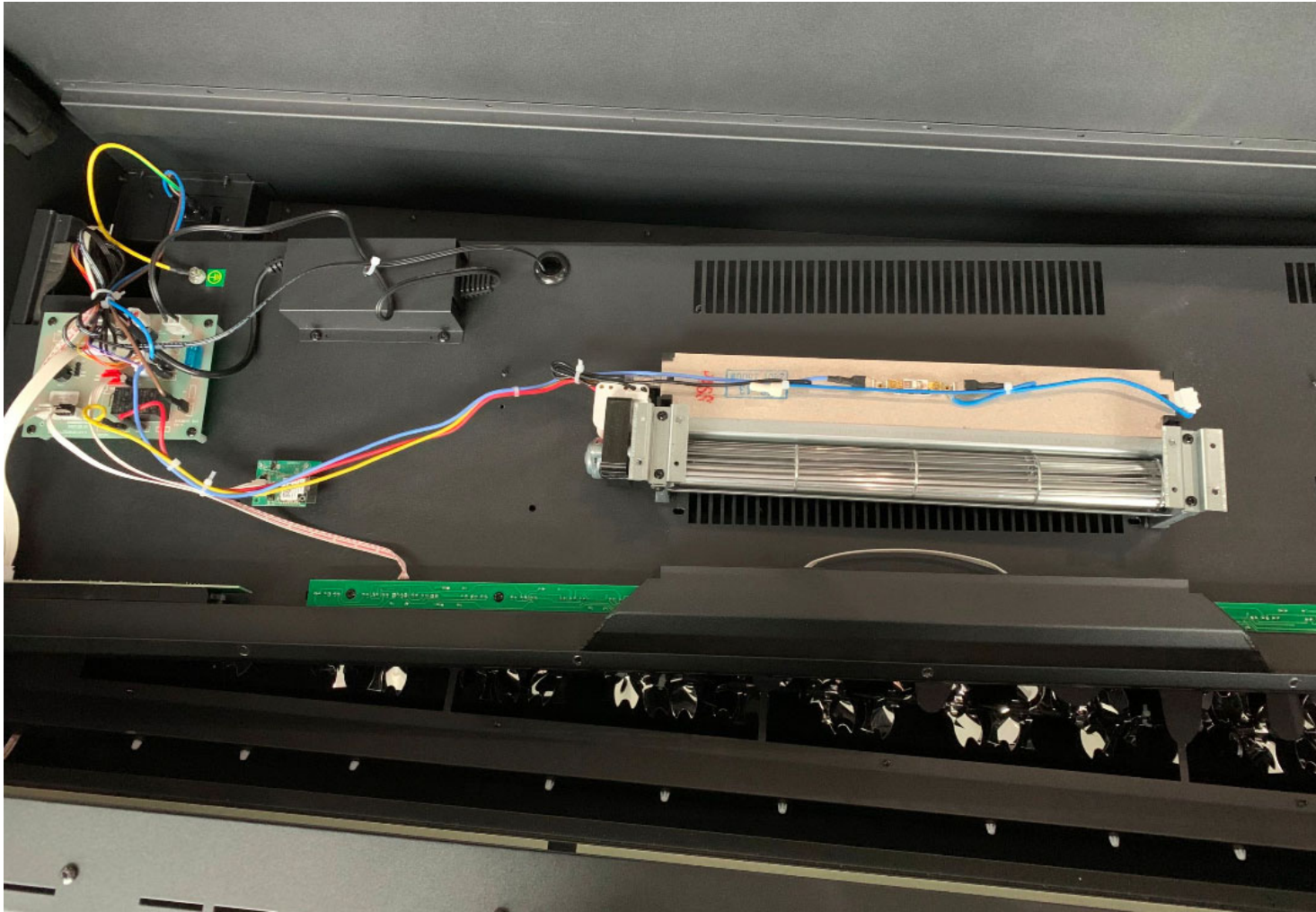
**PLEASE NOTE** for SYM-60/74/88/100-XT(120V model), there are 2 sets heating elements, the repair procedure remains the same.

**Step 3** To disconnect the heating element from the inner top panel, remove the screws circled in red



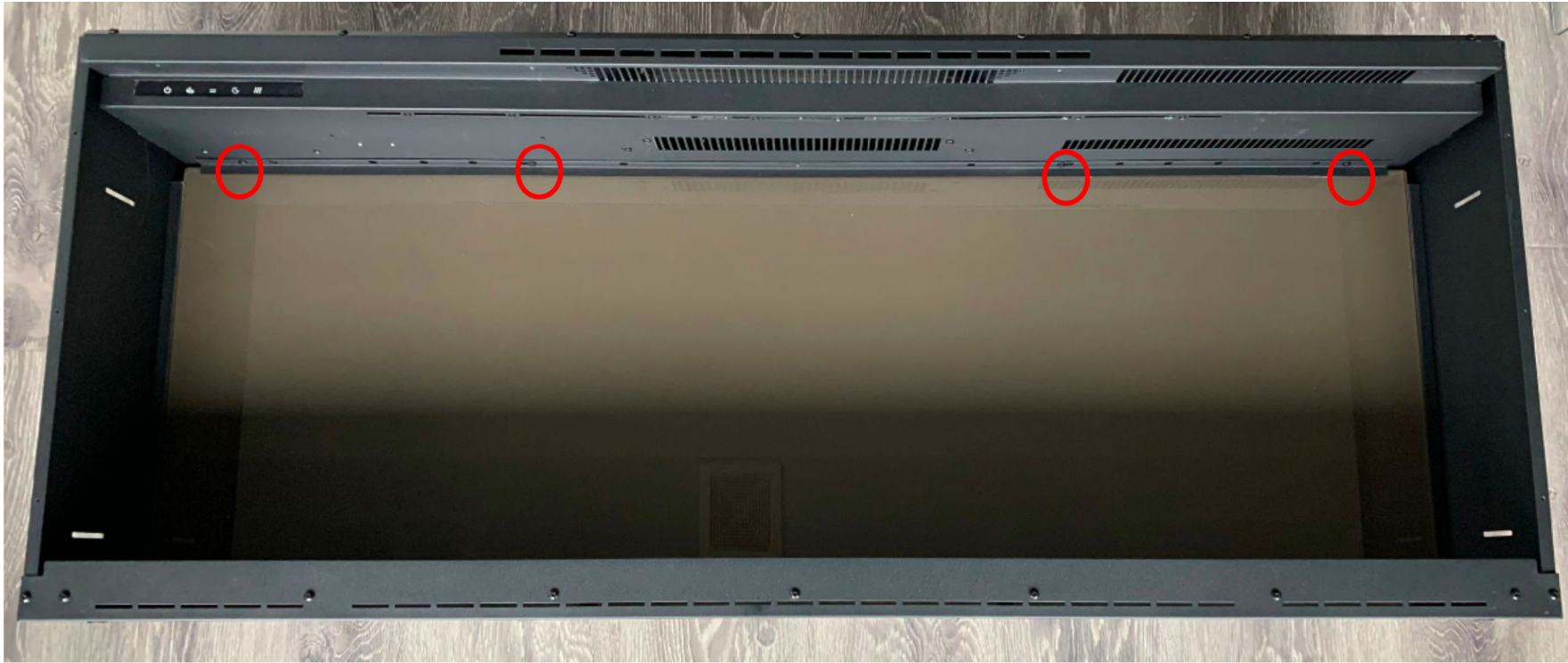


**Step 4** The heating element must be unplugged to be changed.



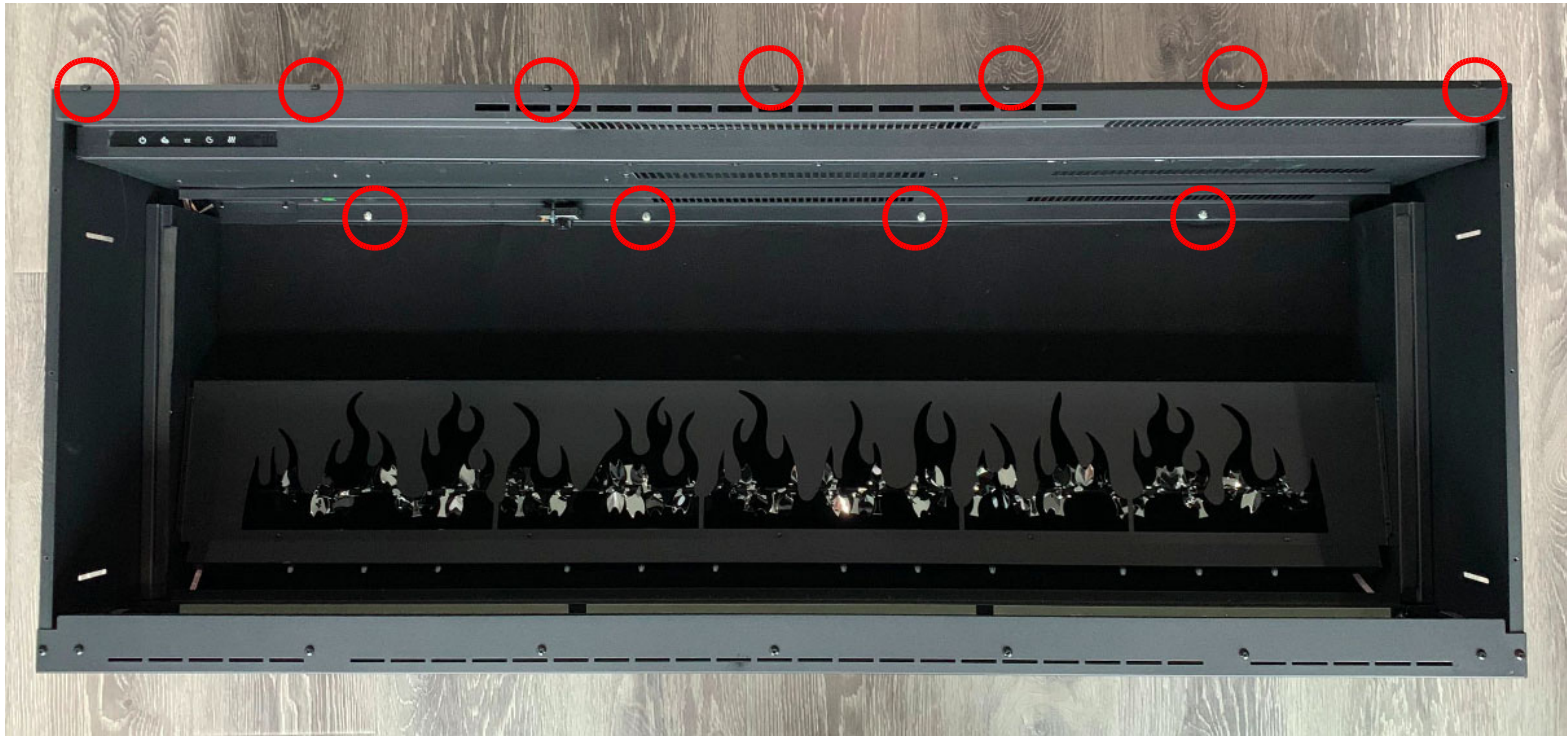
# Replace the Circuit Board

You arrive here after following Steps 1 to 4 in Replacing the LED Tray Lights



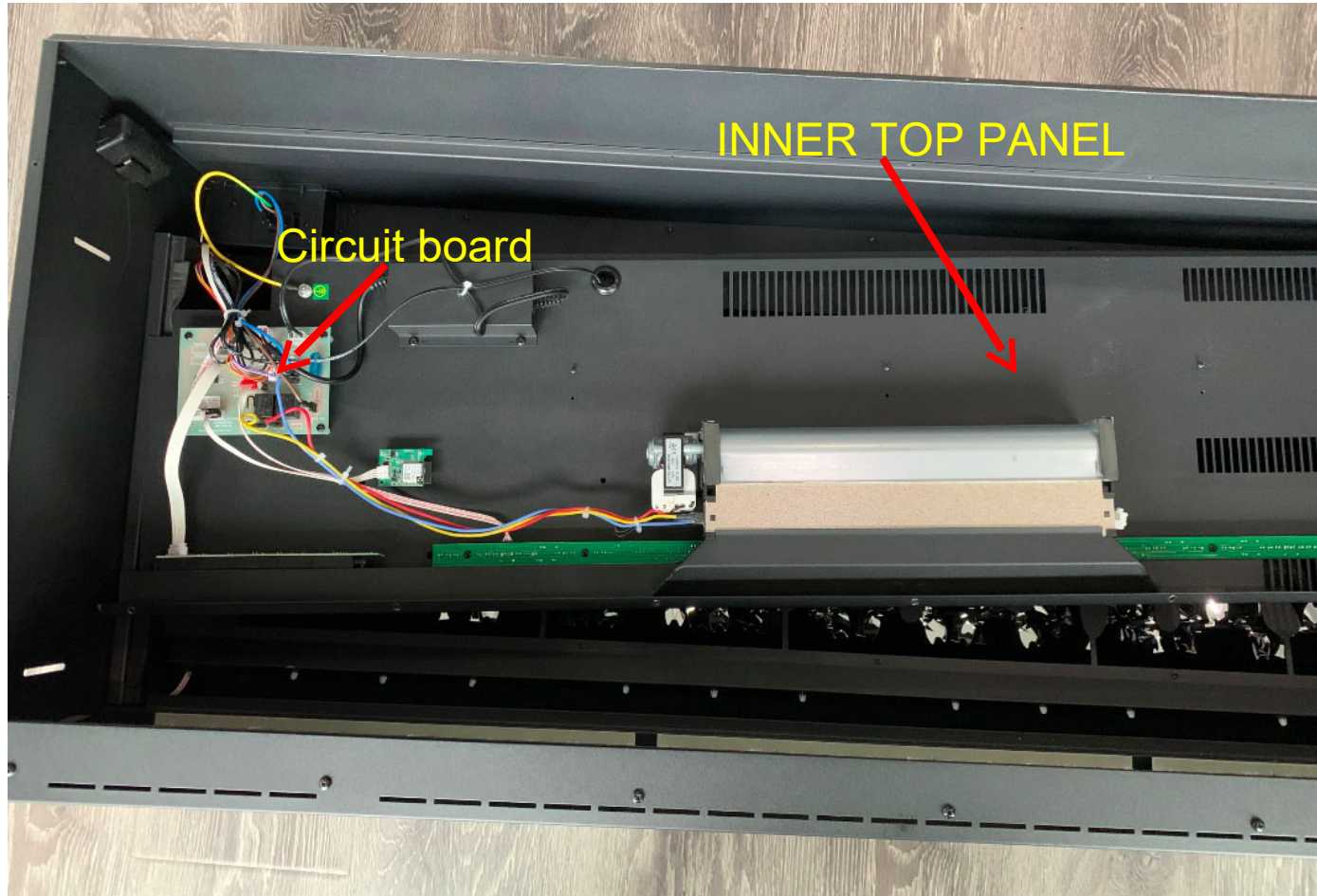
**Step 1** The steel bar fixing the back glass can be removed by unscrewing the screws circled in red and then removing the glass.

**Step 2** Remove the screws circled in red to take off the inner top panel.



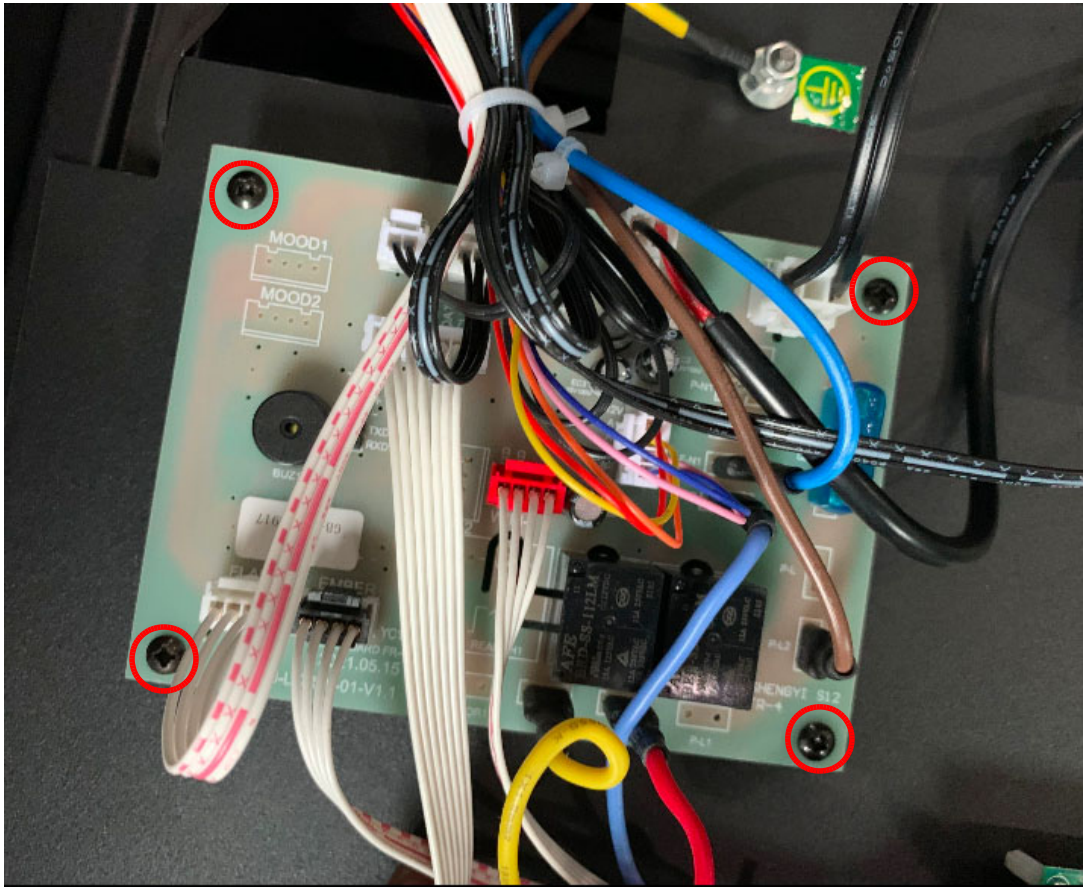


The inner top panel holds the heating element, circuit board, signal receiver, and WiFi card



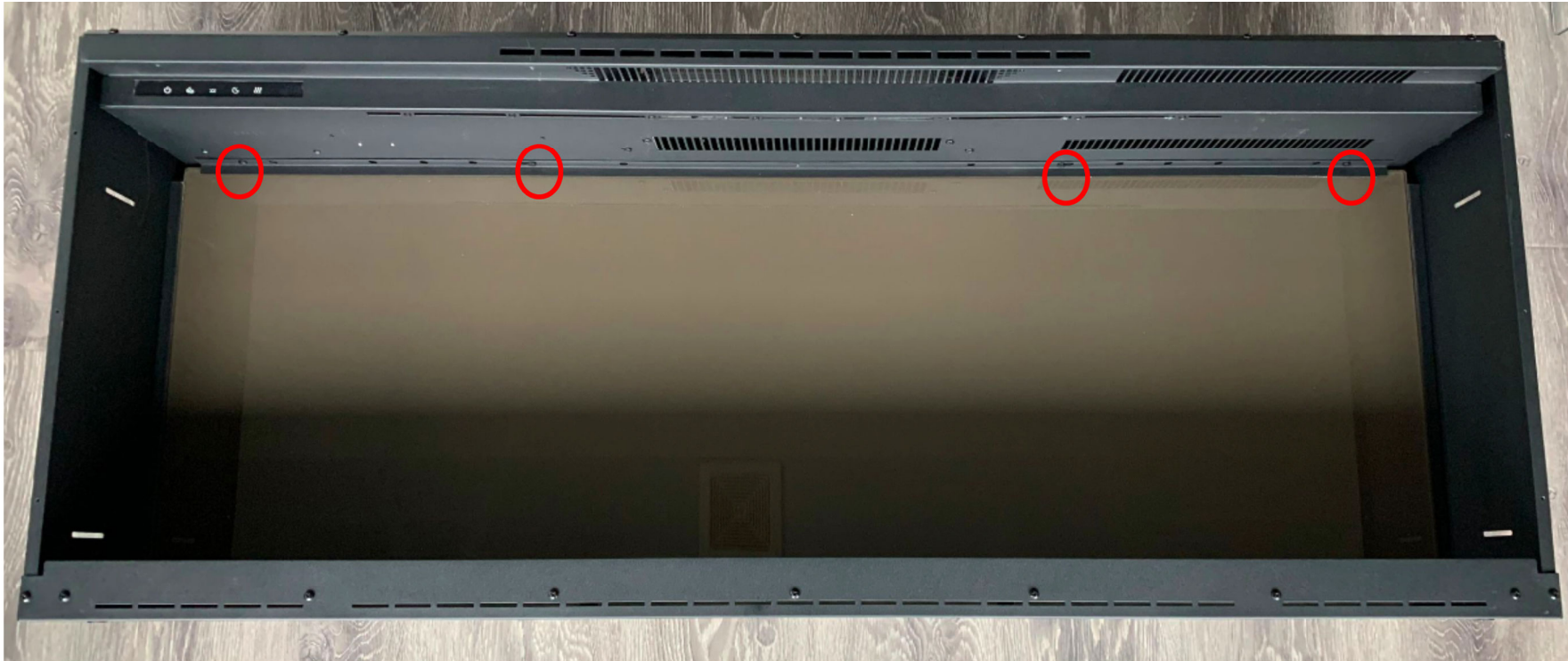
## Step 3

Remove the screws circled in red and replace the failed circuit board with a new one.



# Replace the signal receiver

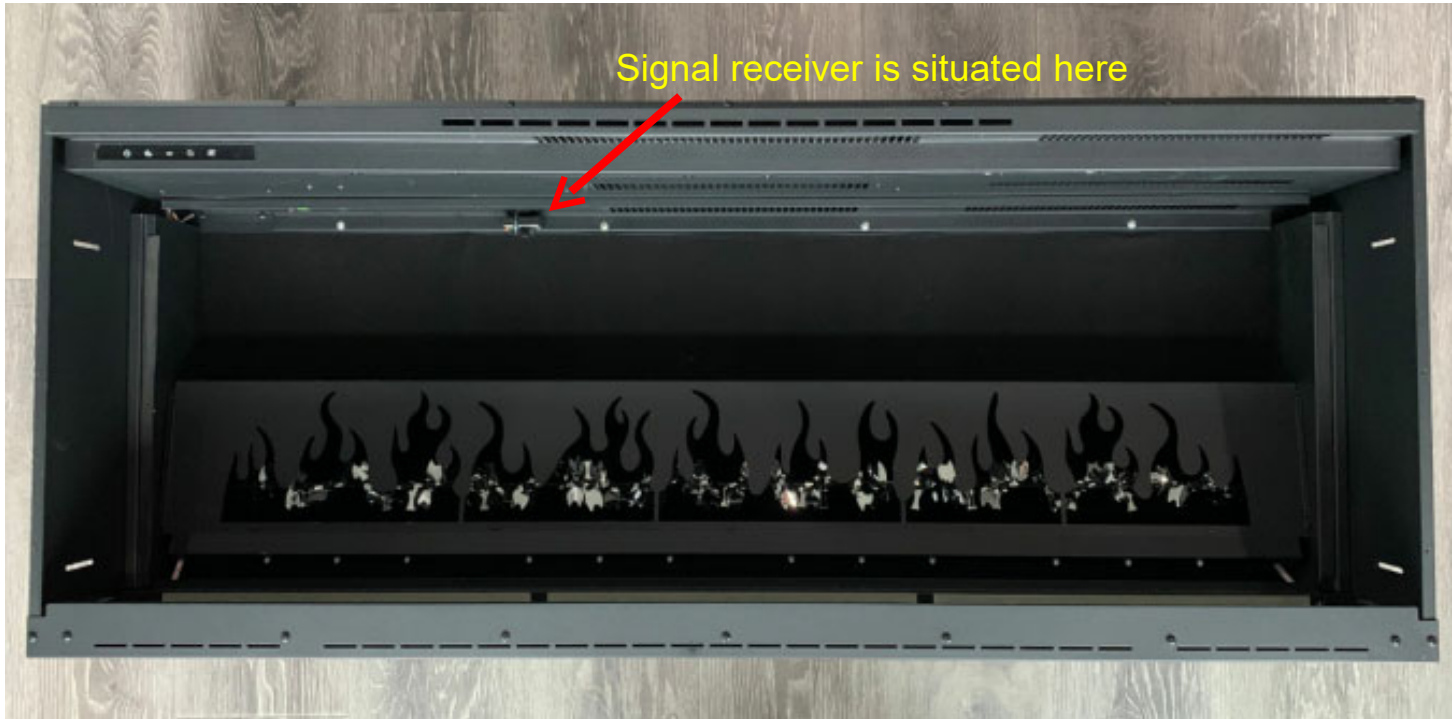
You arrive here after following Step 1 to 4 in Replacing the LED Tray Lights



**Step 1** The steel bar fixing the back glass can be removed by unscrewing the screws circled in red and then removing the glass.

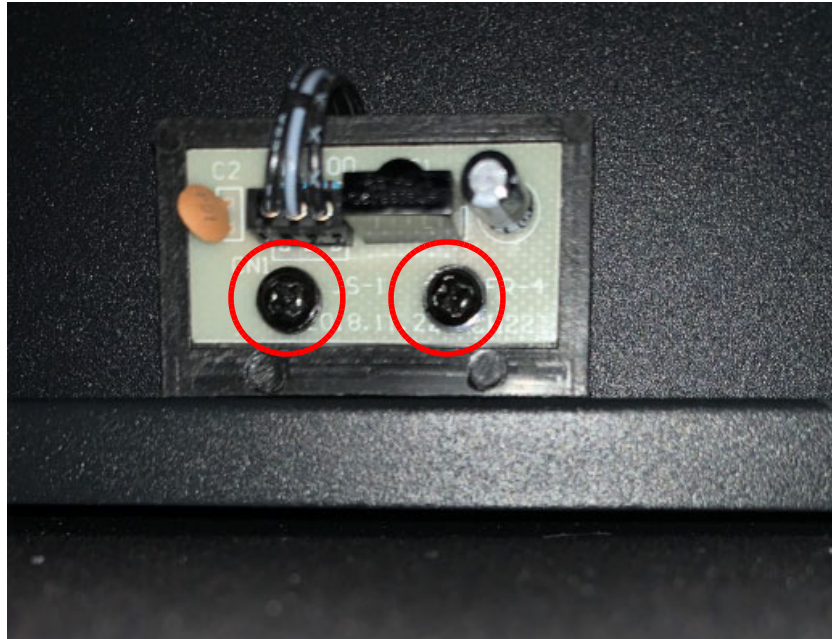


Signal receiver is situated here



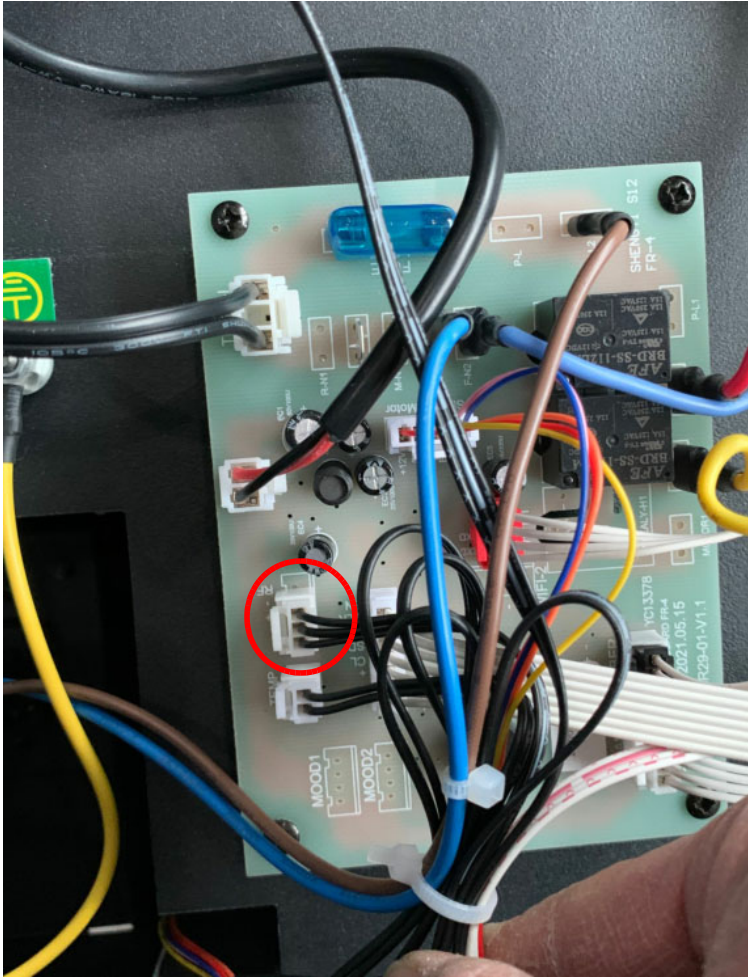


**Step 2** Remove the screws circled in red to disconnect the signal receiver from the fireplace.



**Step 3** Remove the screws circled in red to take off the inner top panel





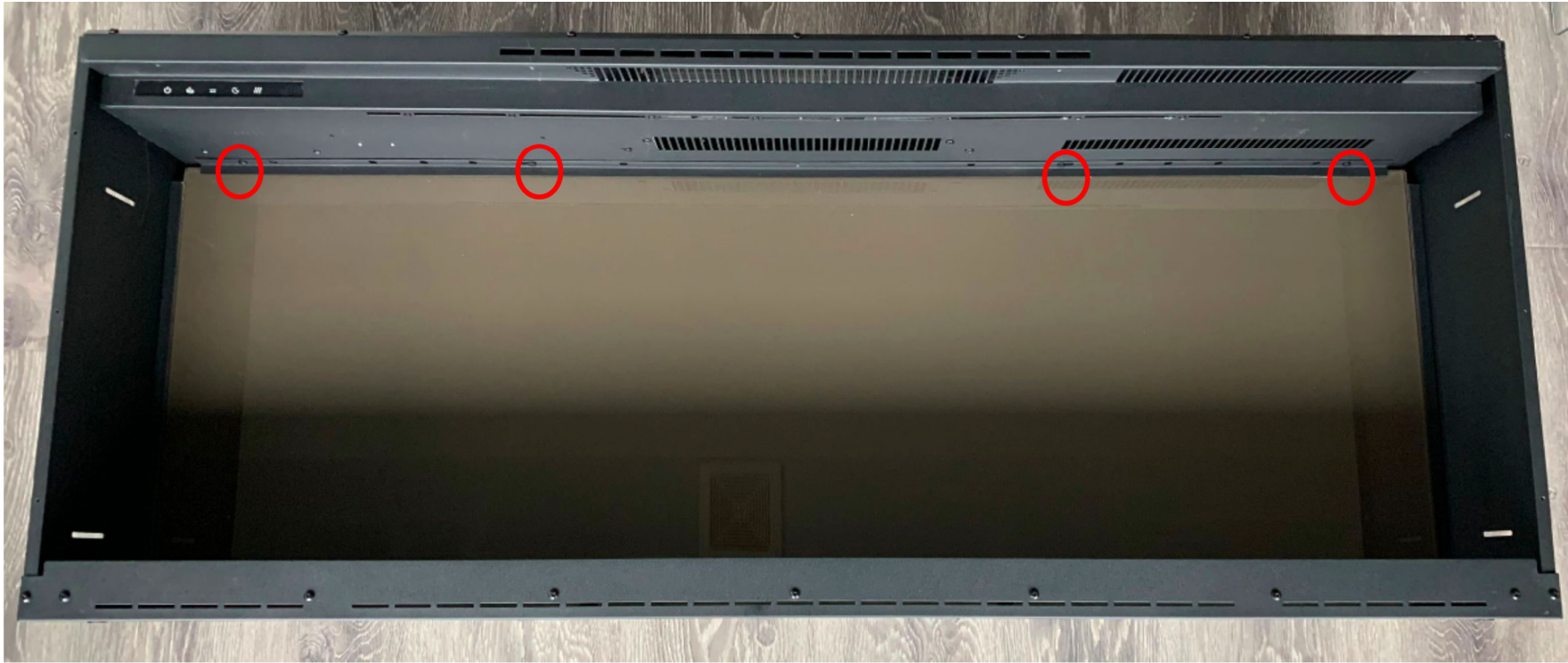
## Step 4

Unplug the signal receiver from the circuit board and replace it with a new one.



# Replace the Canopy light

You arrive here after following Step 1 to 4 in Replacing the LED Tray Light.

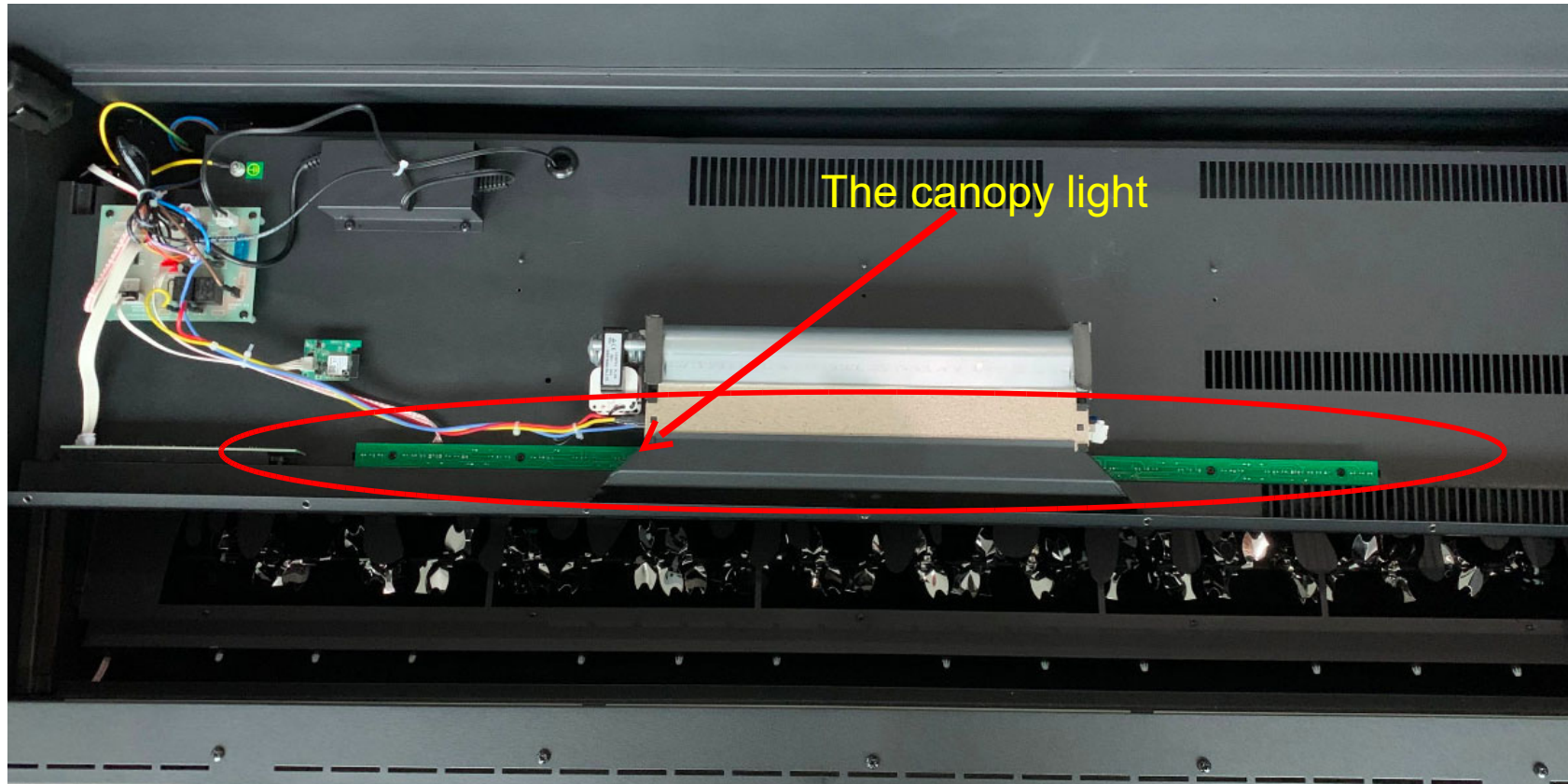


**Step 1** The steel bar fixing the back glass can be removed by unscrewing the screws circled in red and then removing the back glass

**Step 2** Remove the screws circled in red to take off the inner top panel



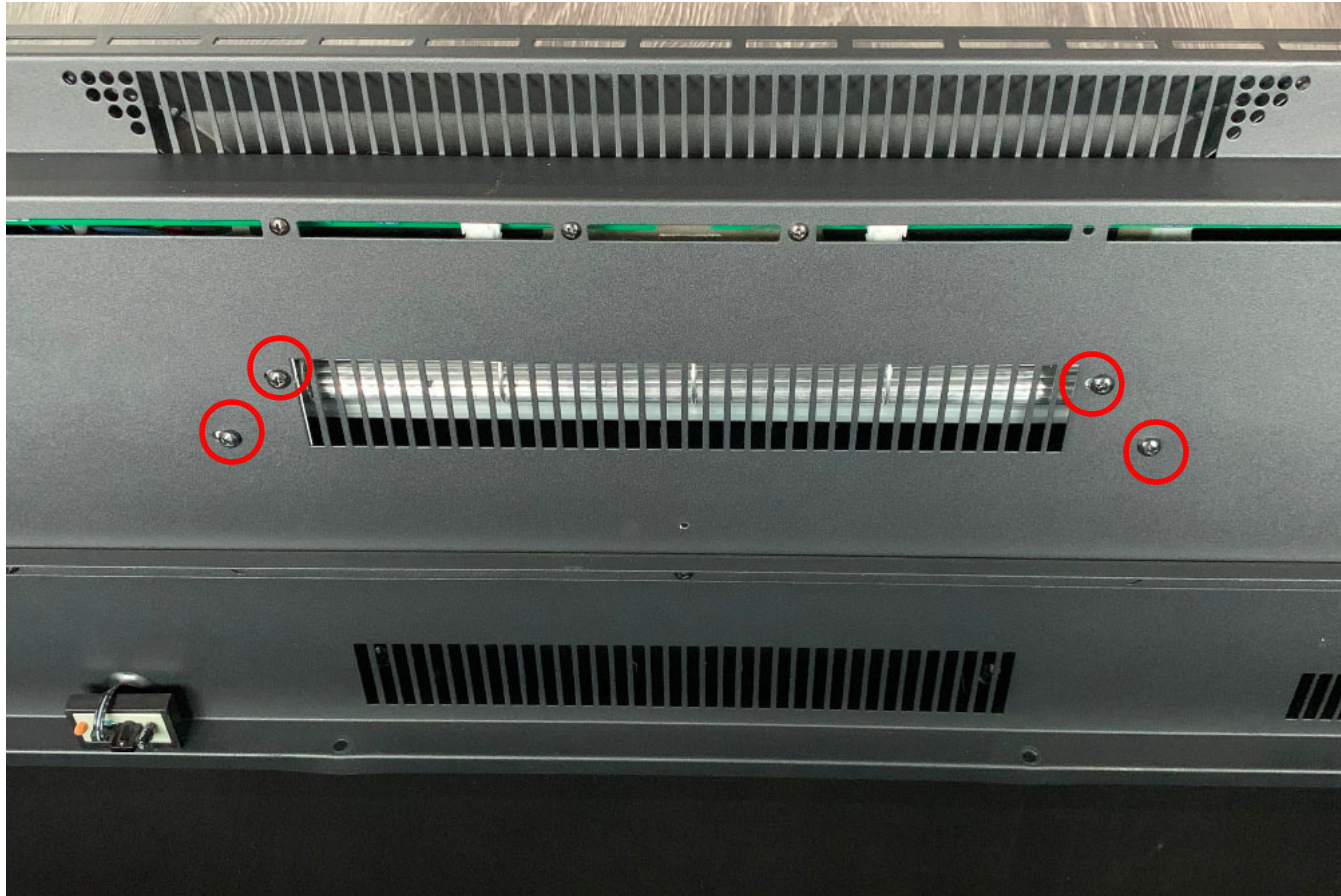
The heating element, circuit board, canopy light, signal receiver and WiFi card are all fixed on the inner top panel

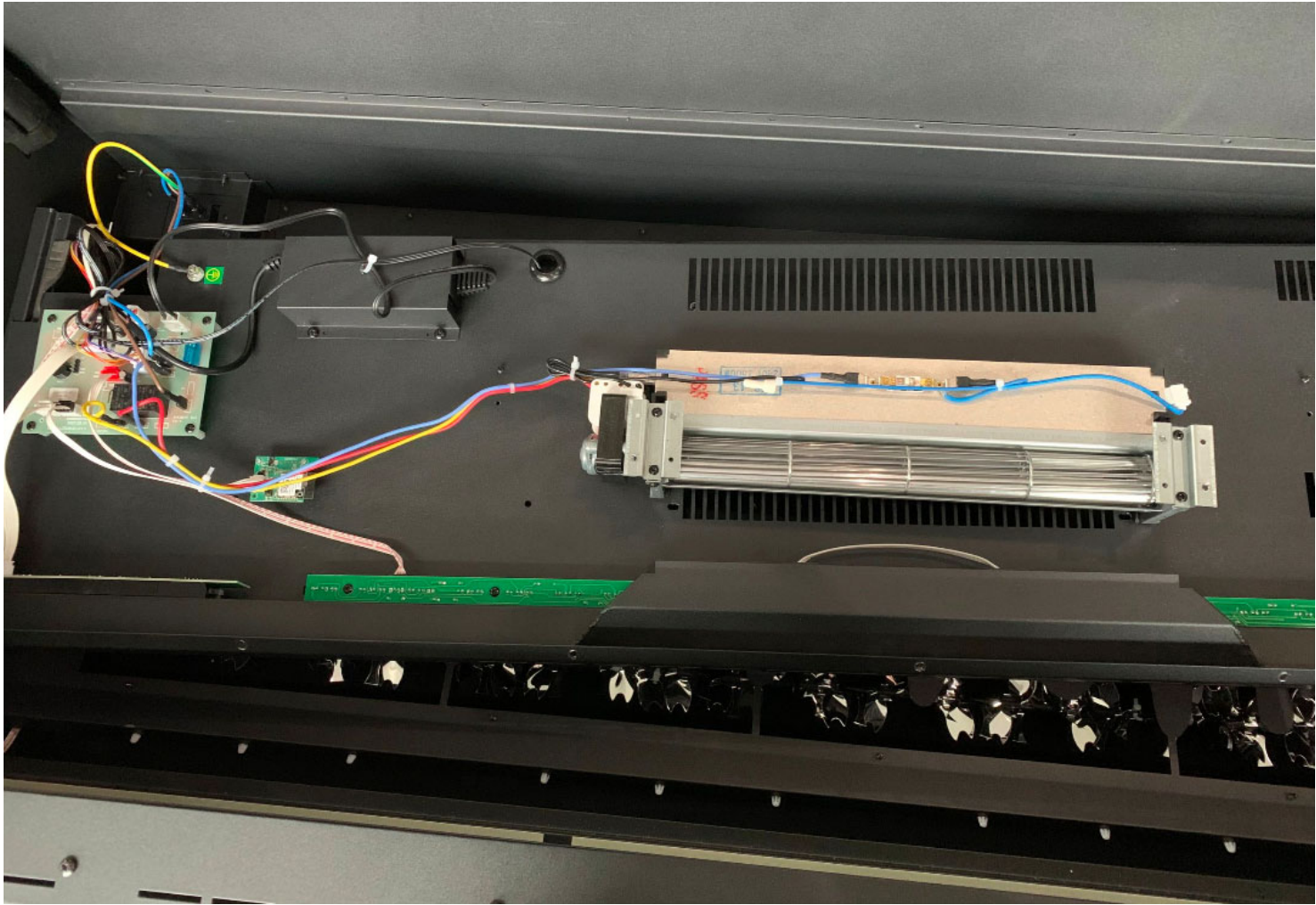




# Step 3

Unscrew the screws circled in red to disconnect the heating assembly from the inner top panel.



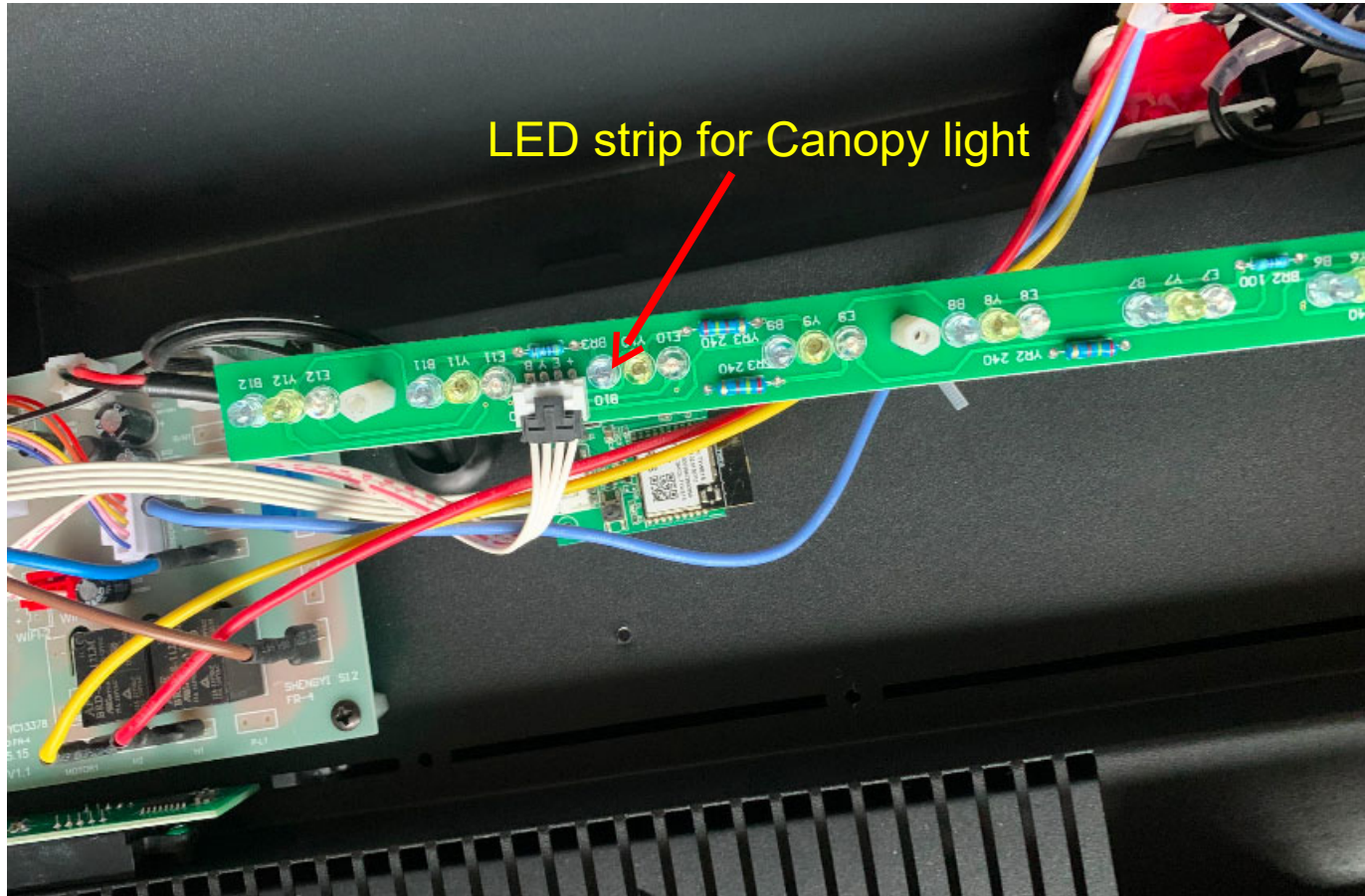


**Step 4** Unscrew the screws circled in red to disconnect the canopy light assembly from the inner top panel.



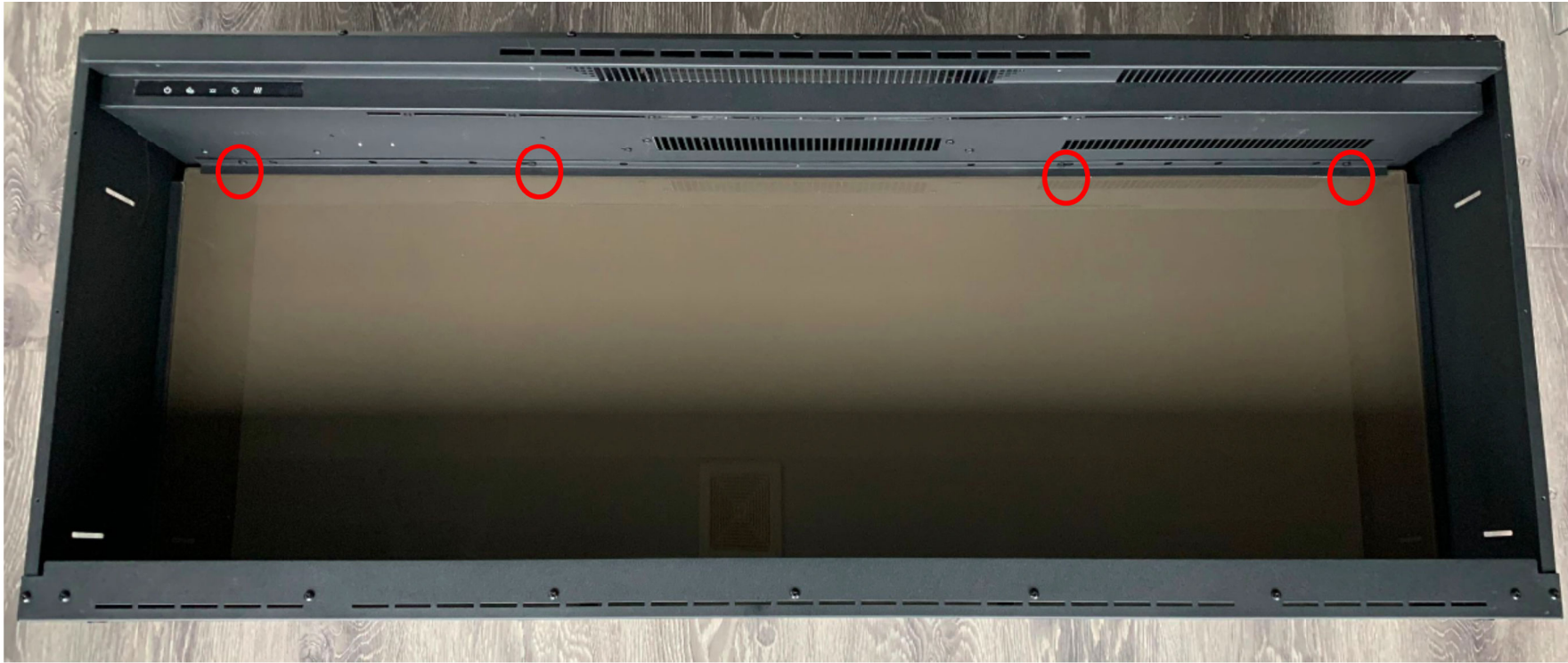


# Step 5 Unplug to change a new LED strip for Canopy light.



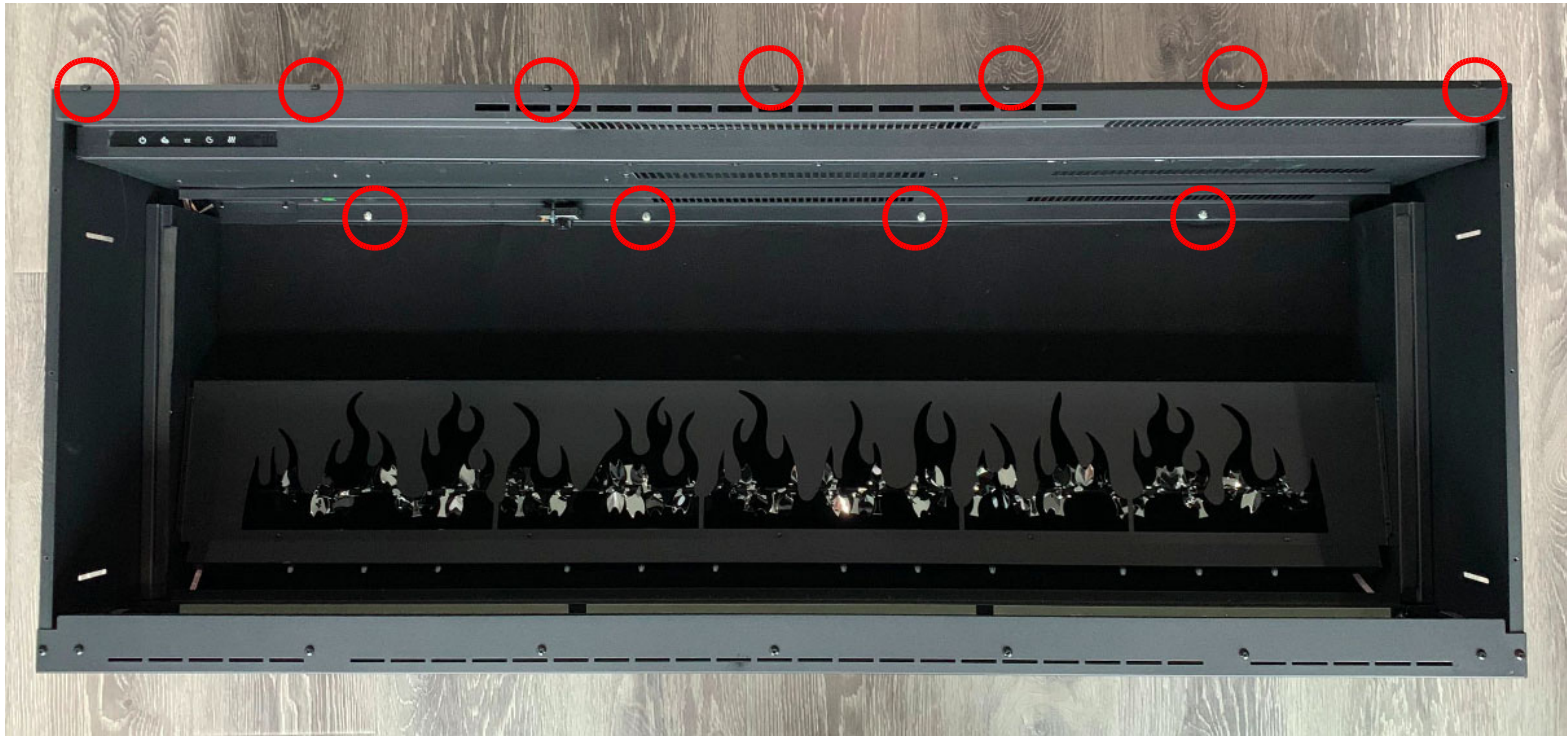
# Replace the Touch Panel

Follow STEP 1 to 4 in Replace Tray LED light, you arrive at here.



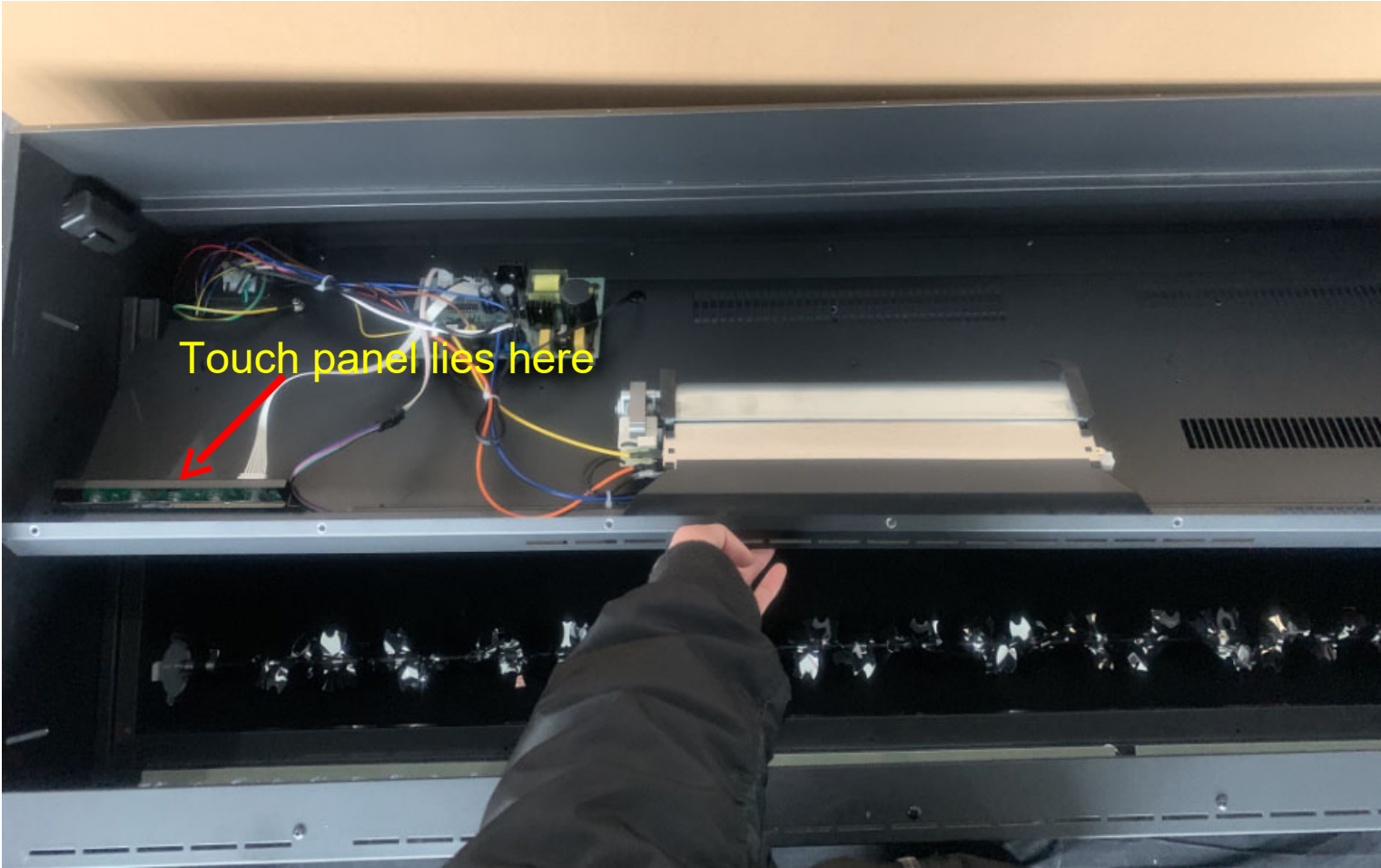
**Step 1** The steel bar fixing the back glass can be removed by unscrewing the screws circled in red and then removing the glass.

**Step 2** Remove the screws circled in red to take off the inner top panel.

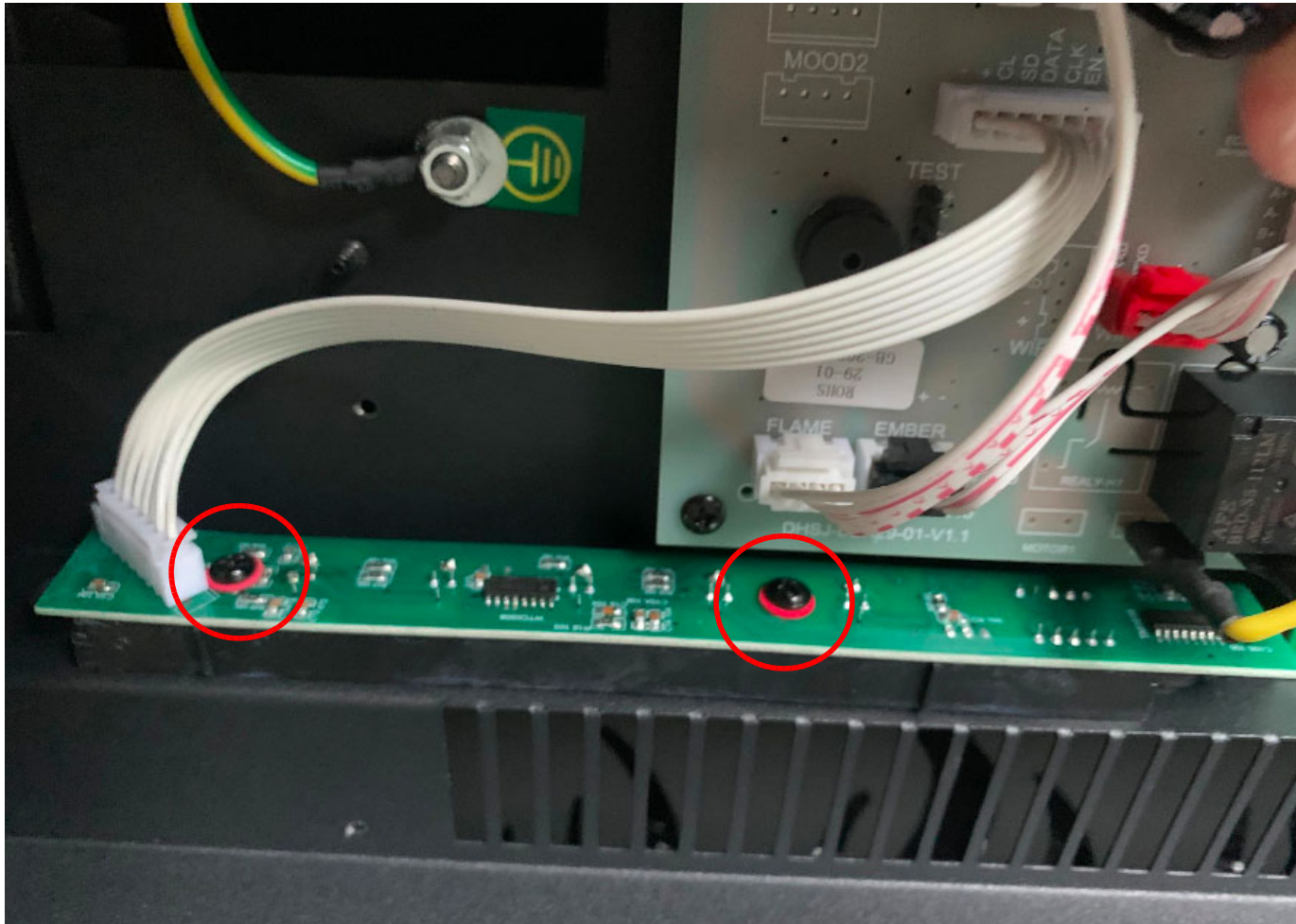




The inner top panel holds the heating element, circuit board, signal receiver, and WiFi Card

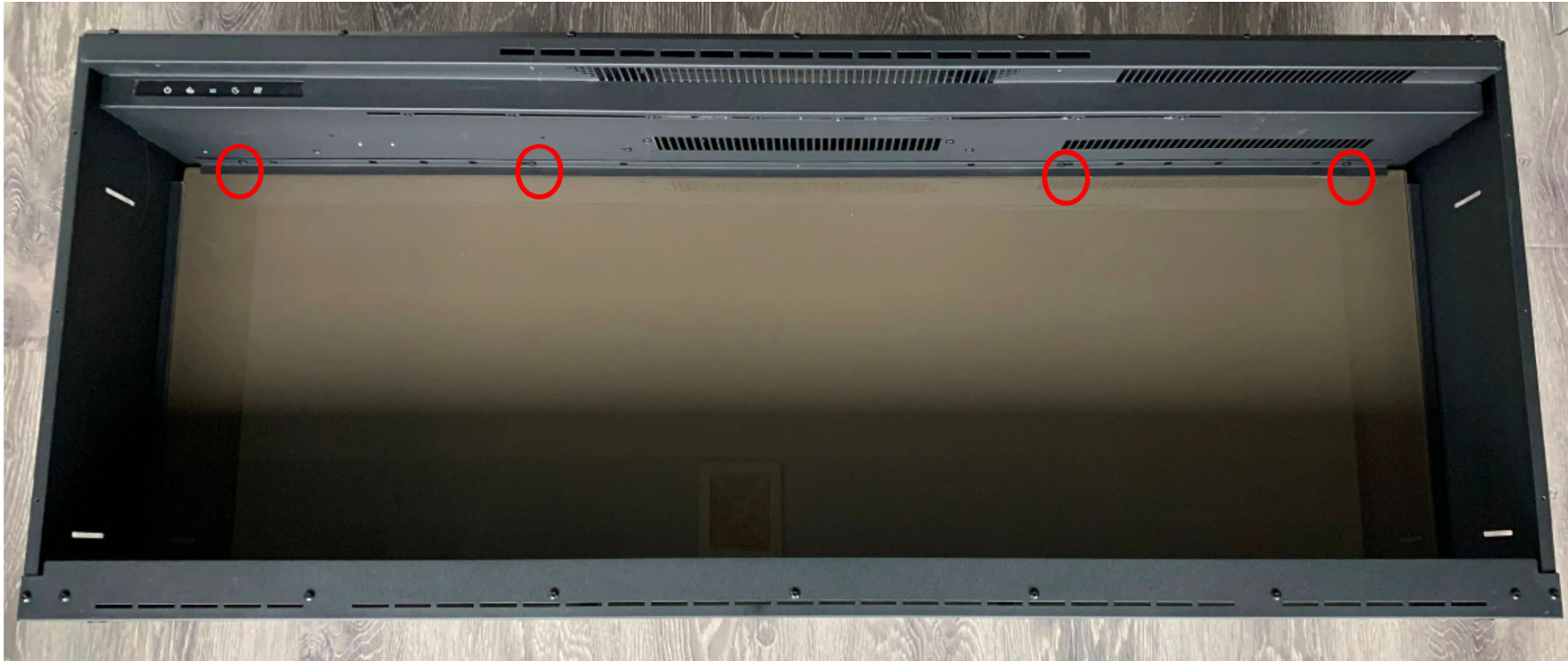


**Step 3** Unscrew the screws circled in red to take off the touch panel.



# Replace the Wi-Fi card

You arrive here after following Step 1 to 4 in Replacing the LED Tray Lights.



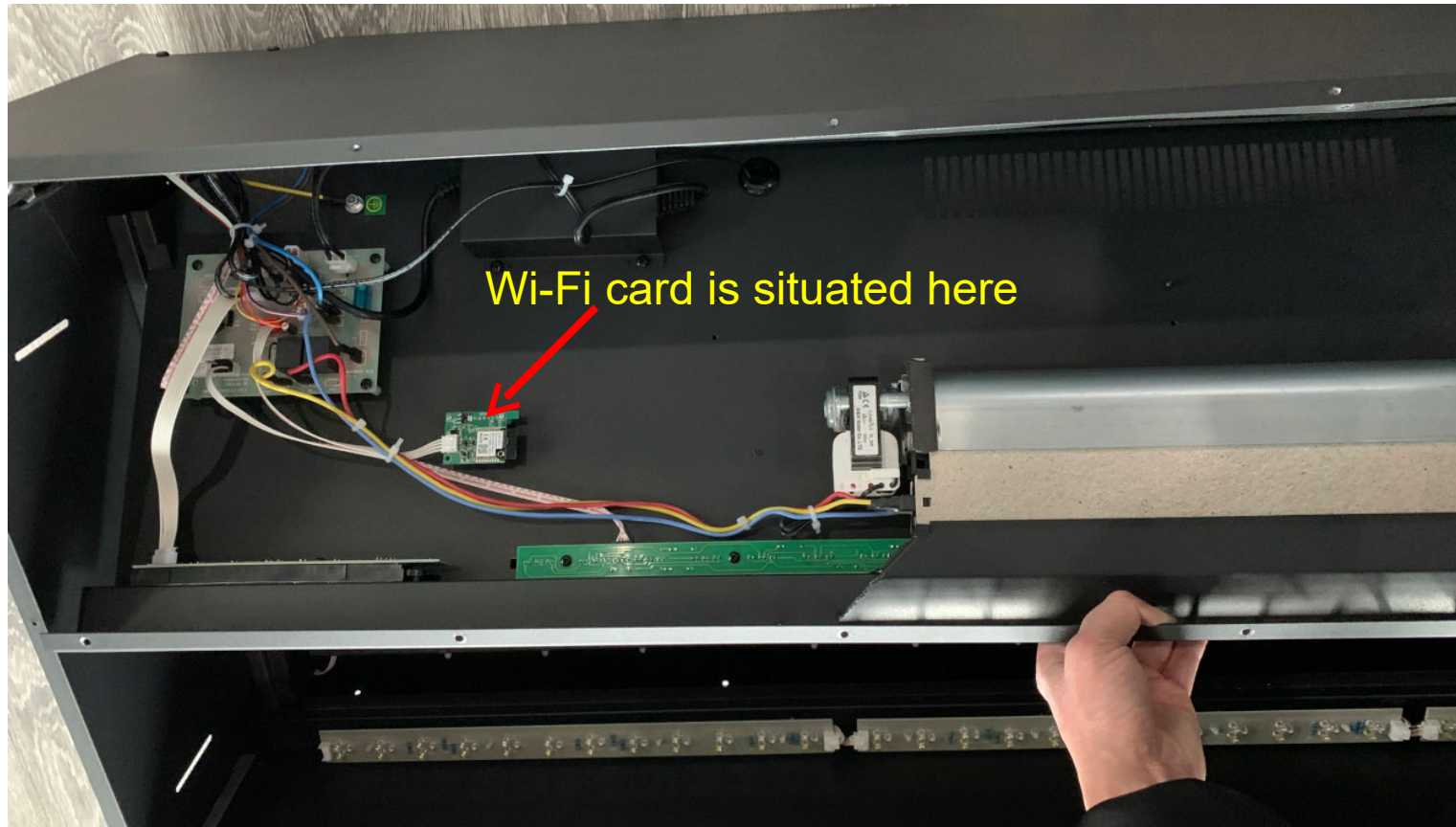
**Step 1** Once the screws circled in red are unfastened, remove the steel bar fixing the back glass and remove the glass .



**Step 2** Remove the inner top panel by removing the screws circled in red.



The inner top panel holds the heating element, circuit board, signal receiver, and WiFi card



**Step 3** To replace a new WiFi card, remove the screws circled in red and unplug the old one .

