

SHELF ASSEMBLY & INSTALLATION

Included Parts List:

- A: (6) 2-1/2" Wood Screws
- B: (1) 3/16" Drill Bit

Tools Needed:

- Power Drill
- Tape Measure
- Philips Screw Driver

Installation:

1. Separate the Shelf backplate and the Shelf top plate. Position Shelf backplate in desired location against the wall. Find the studs on your wall and drill screw holes 1" down from the top, on the back of the shelf backplate w/ 3/16" drill bit (provided). Secure with 2-1/2" wood screws (provided). **(See Figure 1)** You can also attach the shelf backplate by using metal self-tapping screws (not provided), or masonry tapcons (not provided).
2. Place the rear of the shelf top plate onto the top of the shelf backplate, and slide firmly into place. **(See Figure 2)**
3. Lower the front of the shelf top plate onto the front of the shelf backplate, and press firmly into place. **(See Figure 3)**

Figure 1

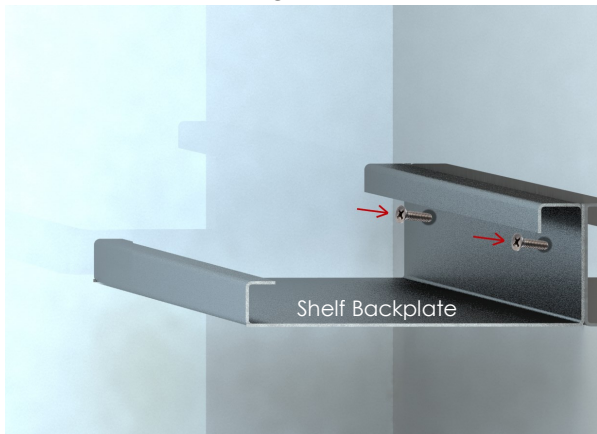


Figure 2

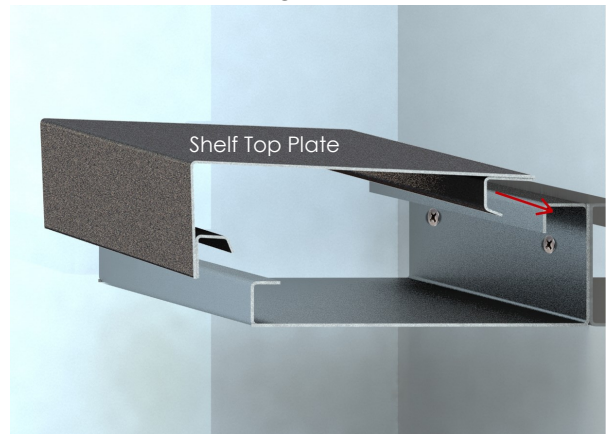
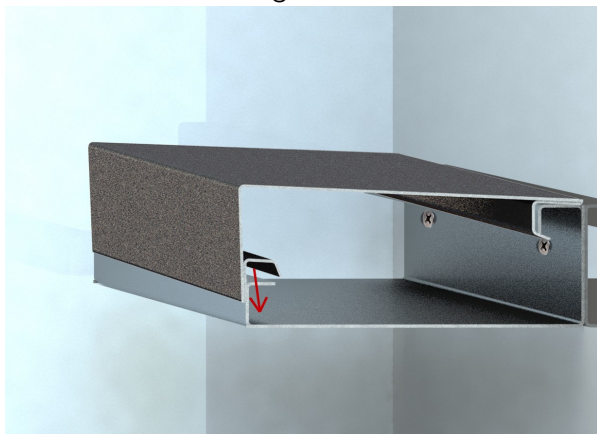


Figure 3



Installed Shelf



WARNING

This product can expose you to chemicals including Carbon Black, which is known to the State of California to cause cancer.

For more information go to www.P65Warnings.ca.gov