



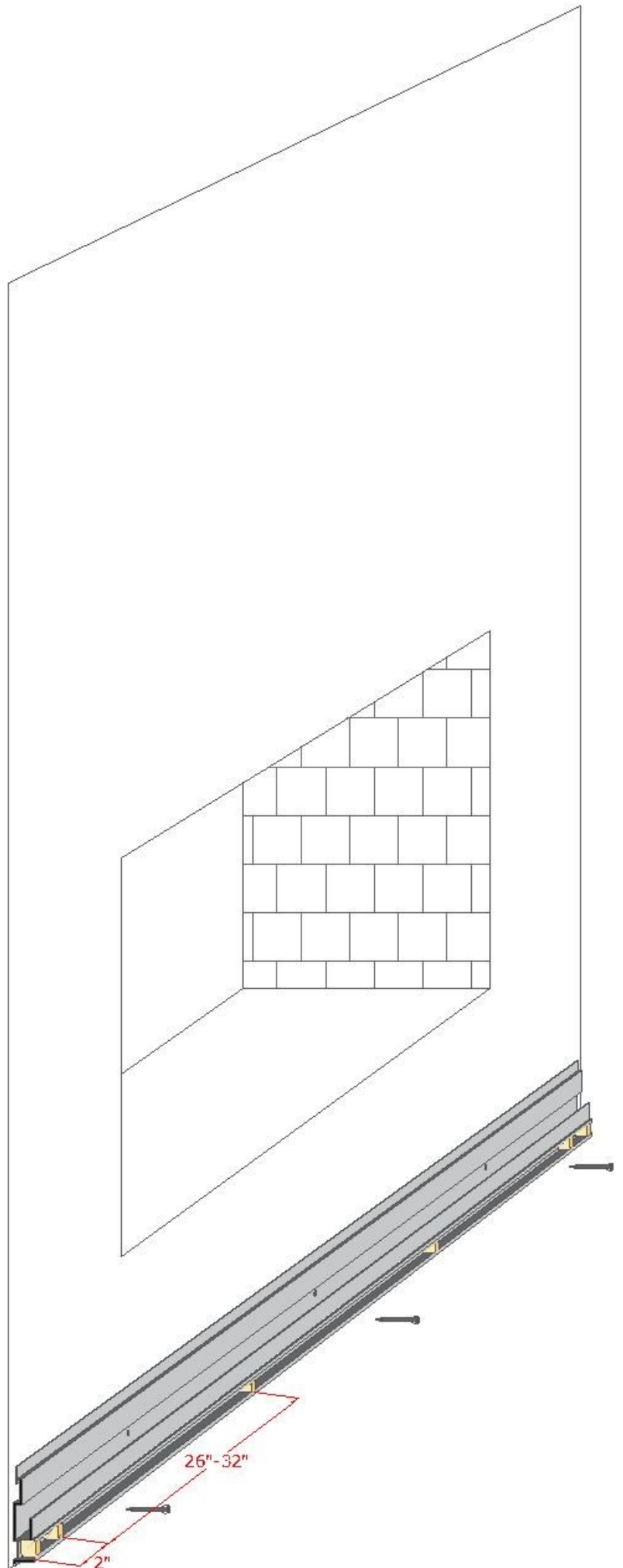
Wall Panel Installation Guide Horizontal & Tile Panels

Tools for Install:

- 2 Drills
- Rubber Mallet
- Side Grinder with Cutting Disc
- Nut Driver (1/2" or less) for installing magnets
 - Level
 - Square
 - Measuring Tape
- Black Magic Marker

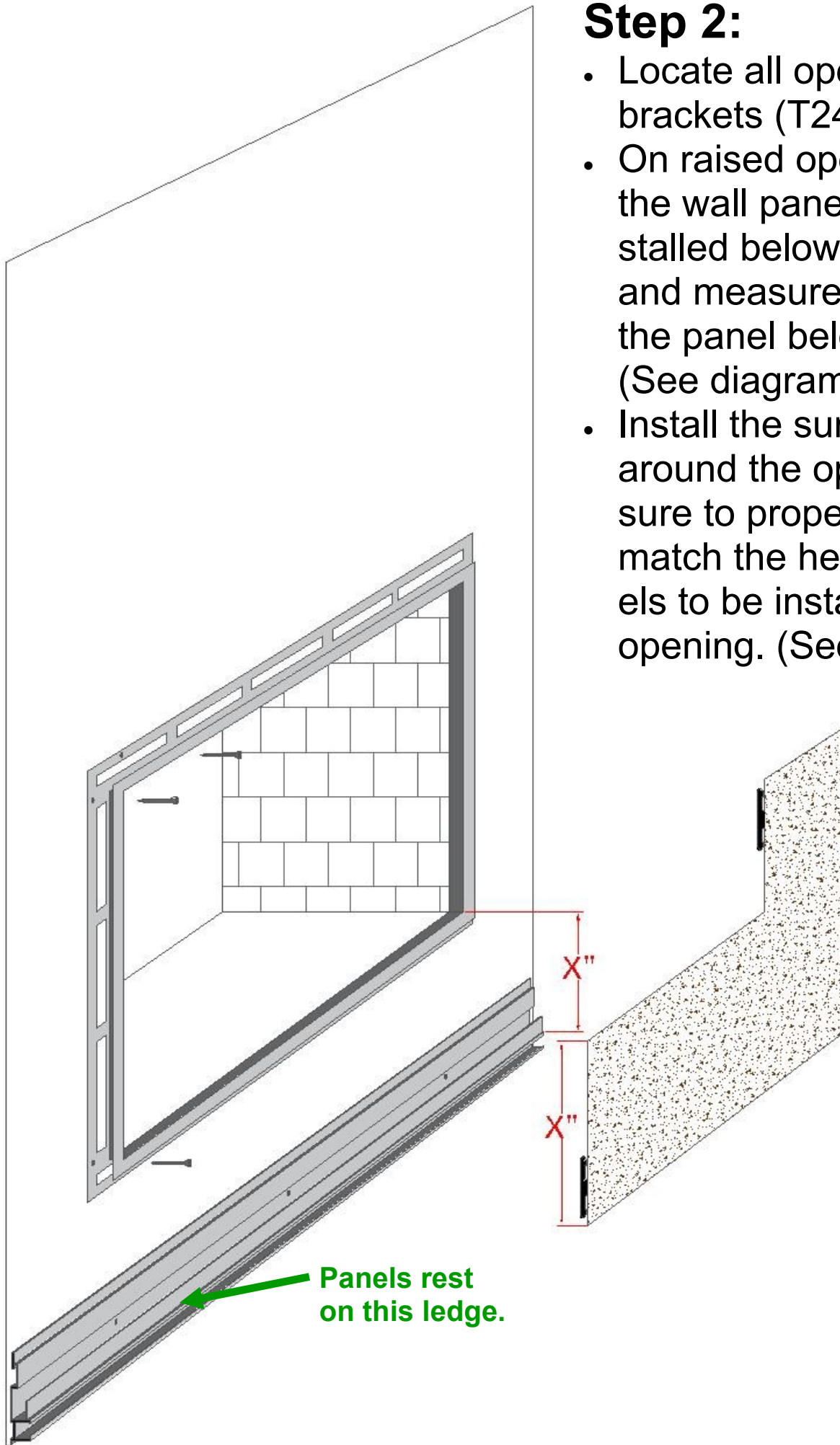
Step 1:

- Locate all bottom wall mount brackets (T21).
- Install magnets in bottom track as shown in diagram. (Tip: Track is tight. Nut Driver and Hammer recommended for install.)
- Position and level the brackets at the bottom of the wall.
- Locate studs, and fasten brackets securely to the wall, being sure all brackets are level and on an equal plane.



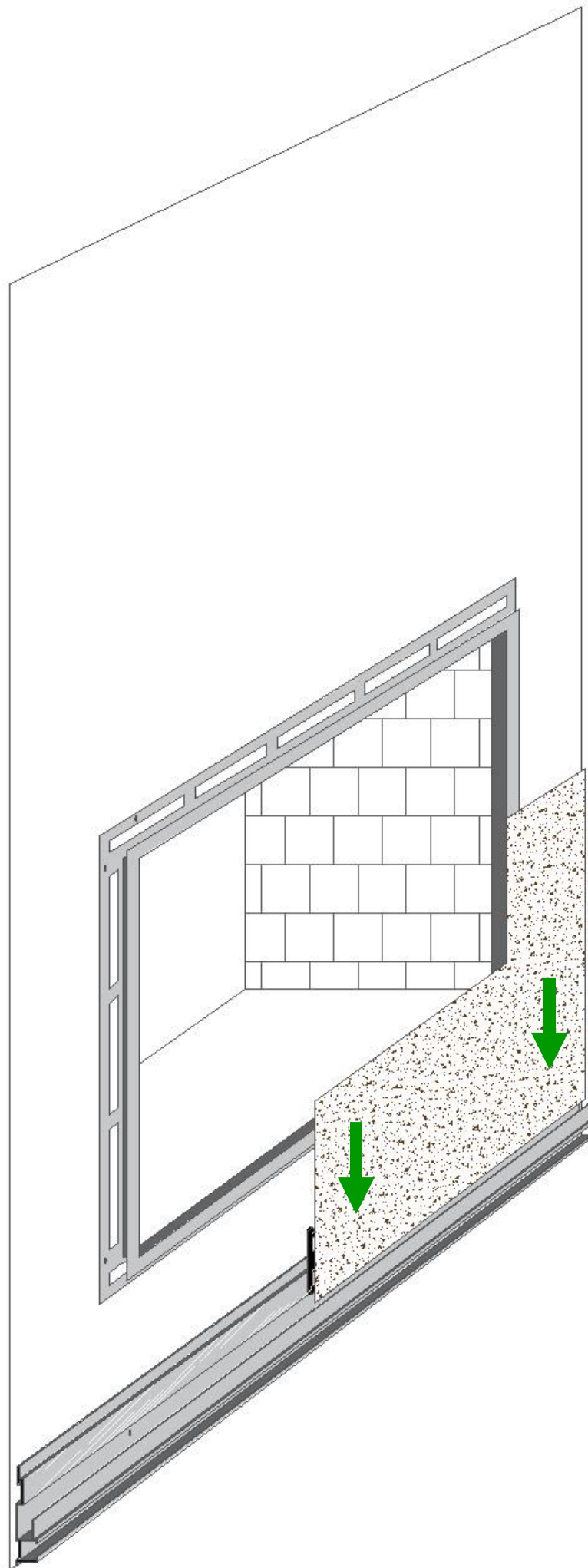
Step 2:

- Locate all opening surround brackets (T24).
- On raised openings, locate the wall panels to be installed below the opening, and measure the height of the panel below the opening (See diagram)
- Install the surround bracket around the opening, being sure to properly align it to match the height of the panels to be installed below the opening. (See diagram)



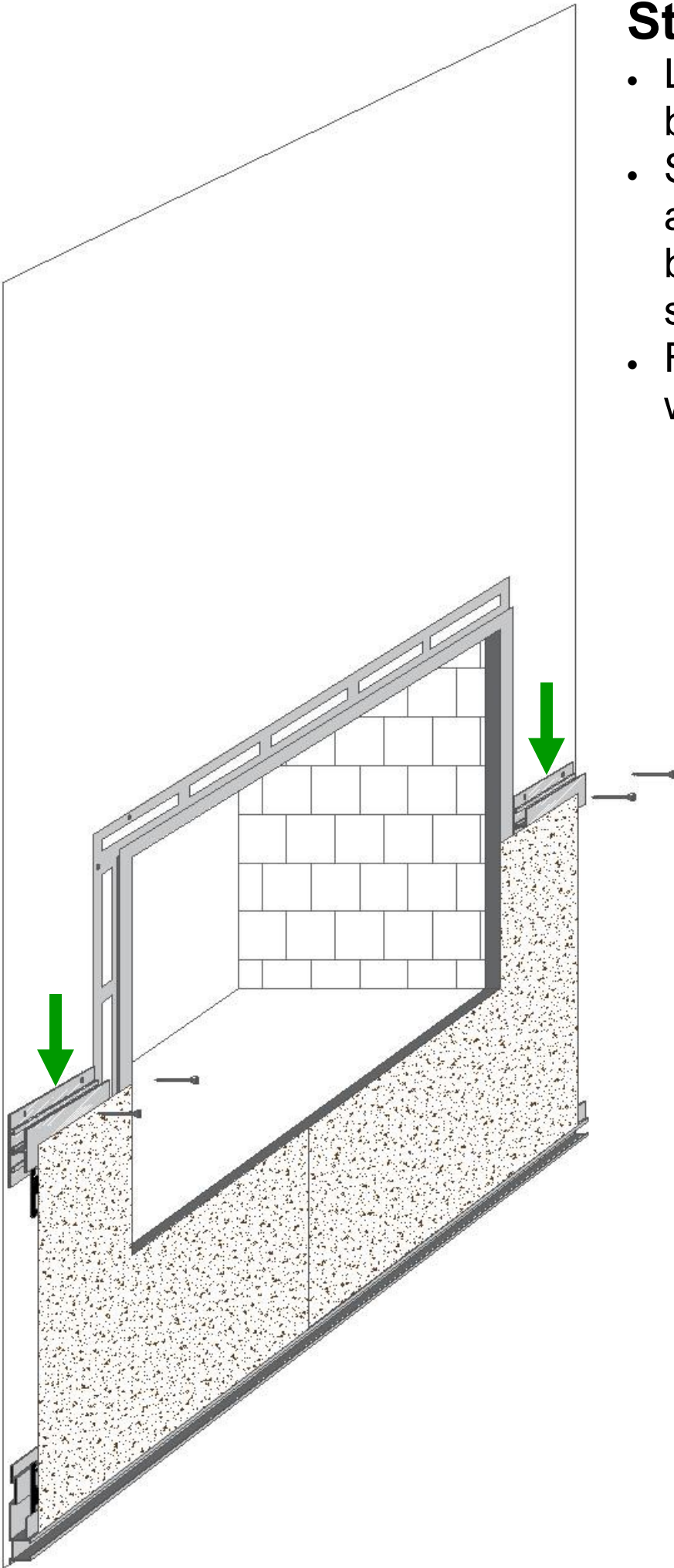
Step 3:

- Locate and install the first row of wall panels.
- All mounting brackets should extend approximately 3/4" beyond the end of the panels.
- Panels are numbered on the back side. Check the included drawing to verify panel locations.



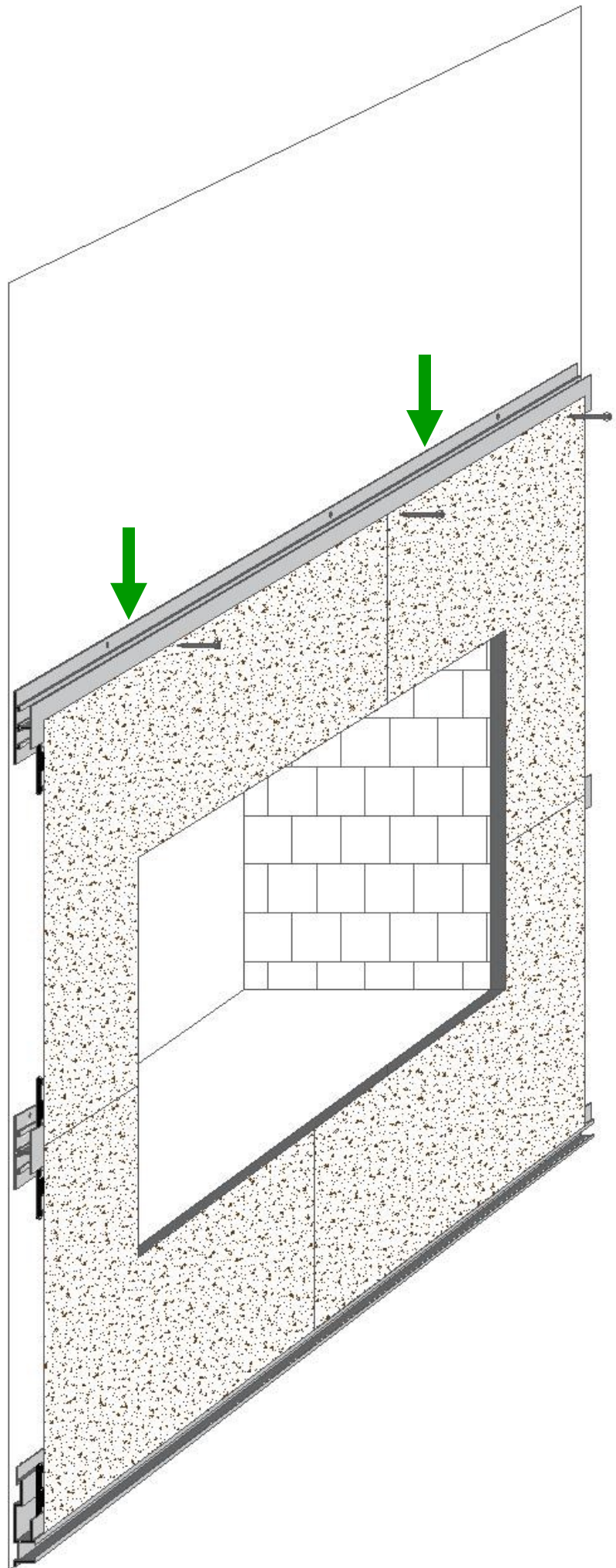
Step 4:

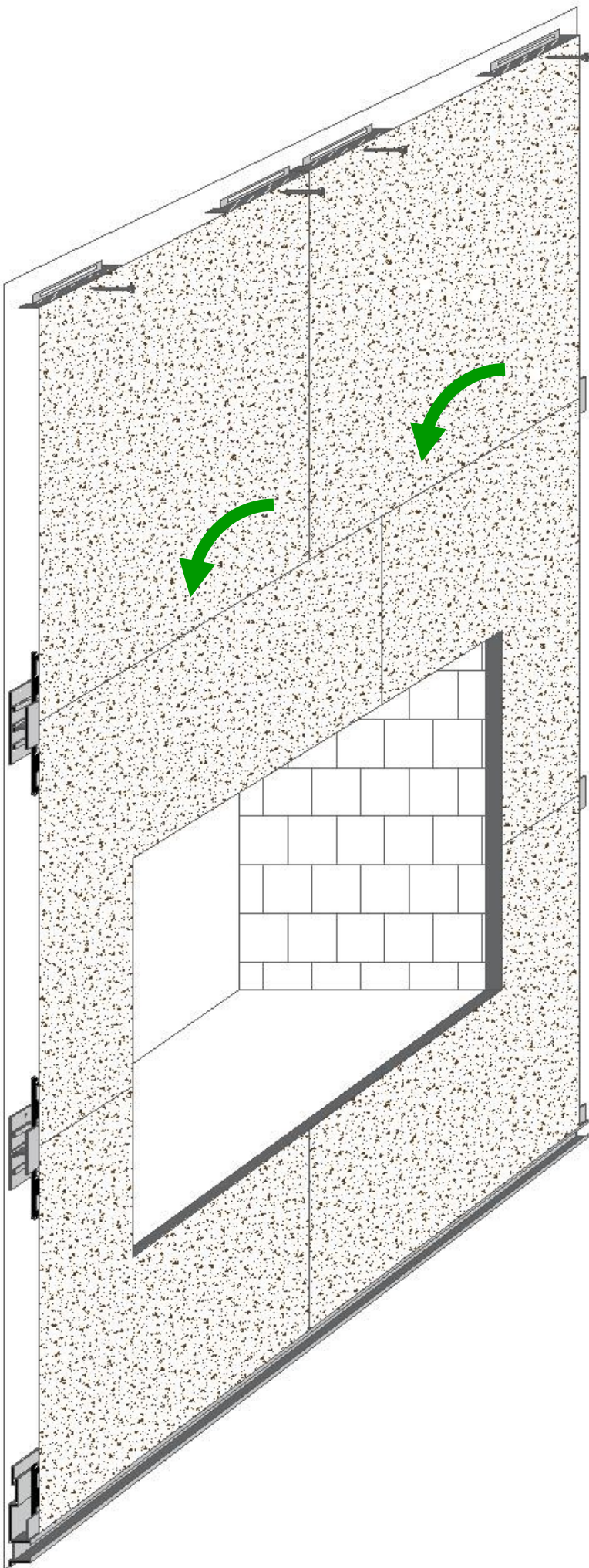
- Locate all middle mounting brackets (T22).
- Set mounting brackets so approximately 3/4" extends beyond the ends of the installed panels.
- Fasten brackets securely to wall.



Step 5:

- As needed, continue **Step 4** until all but the final row of panels are installed.



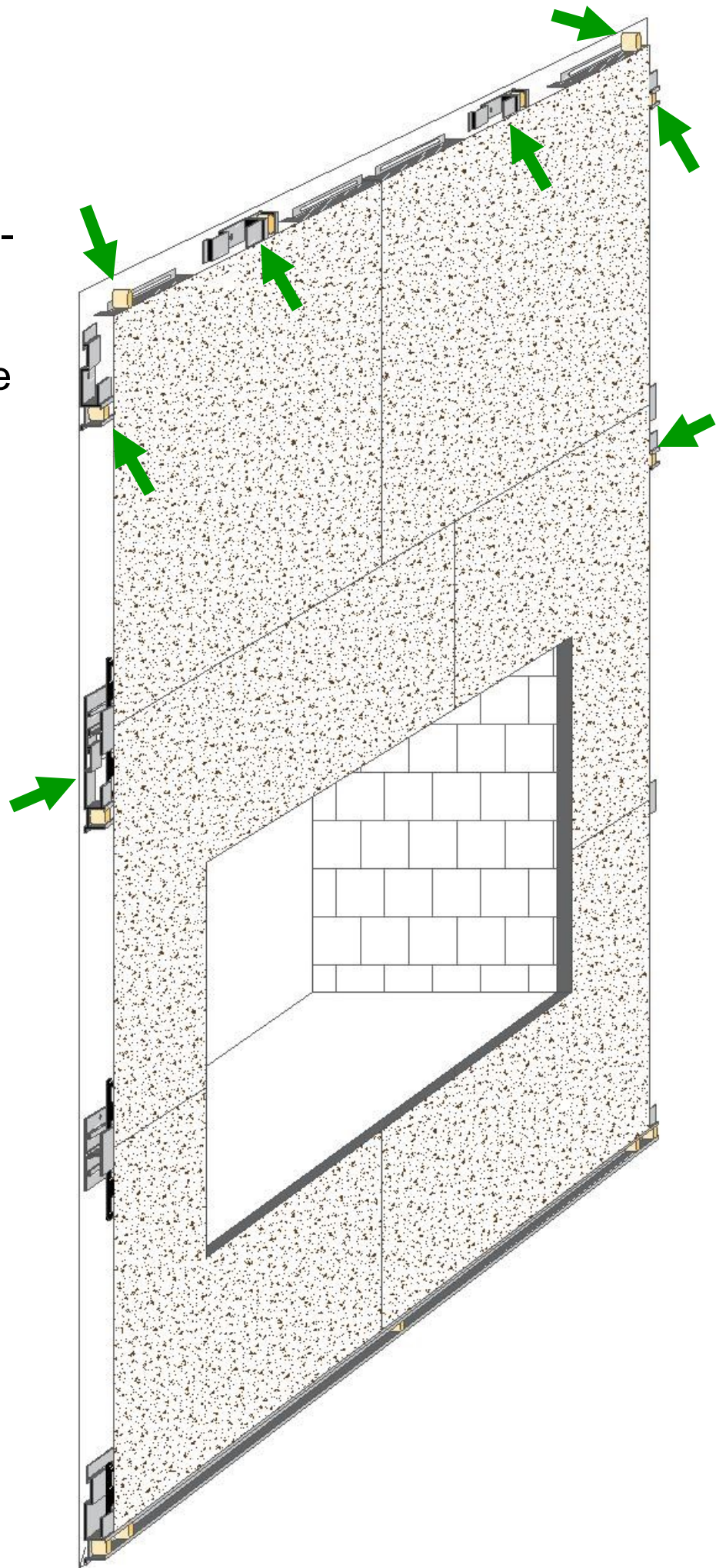


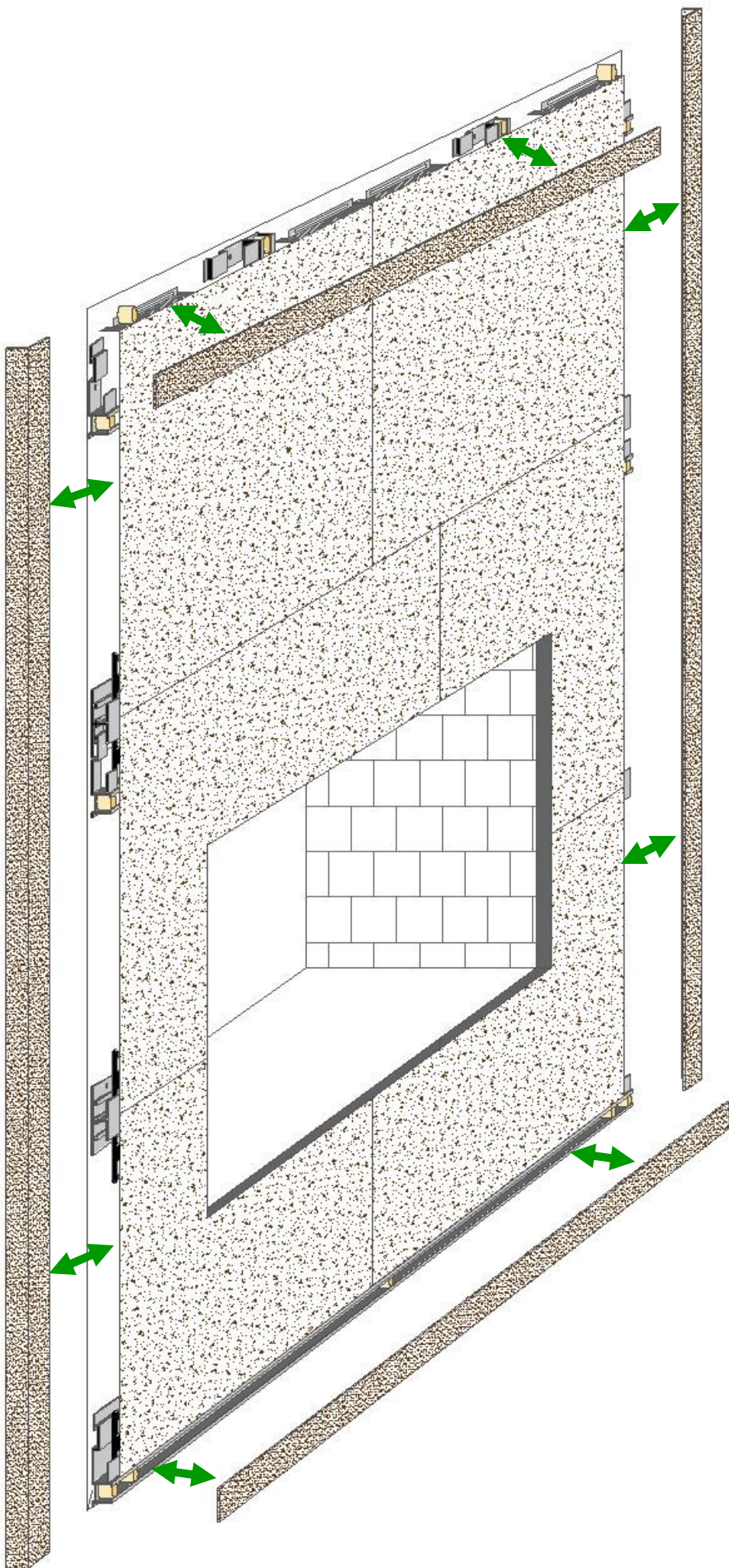
Step 6:

- Locate and install the final row of wall panels.
- Fasten the top row of panels to the wall through pre-installed brackets at top edge of wall panels. (See diagram)

Step 7:

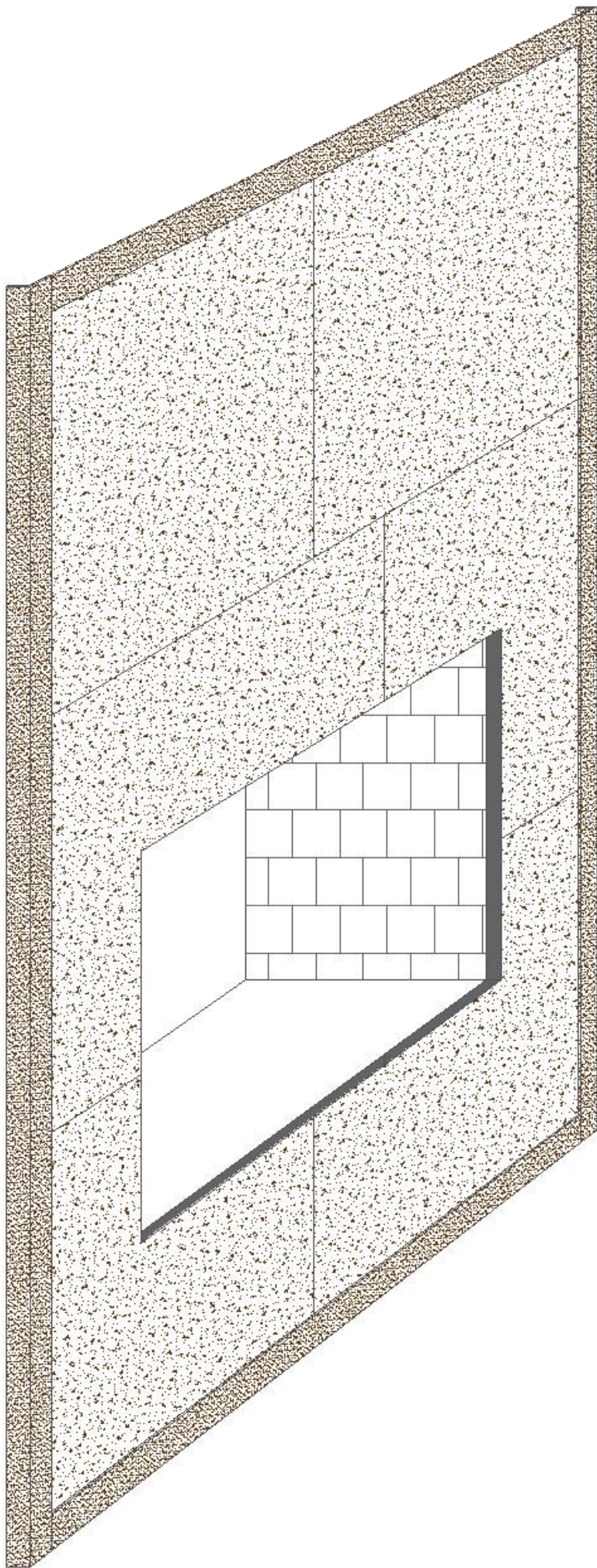
- Locate magnets and magnet holders.
- Strategically place magnet holders & magnets into the horizontal extrusions at left and right, or screw them directly to the wall above and beside the wall panels.
- See diagram at right for approximate magnet locations.





Step 8:

- Locate all trims.
- Trims are numbered on the back side. Check the included drawing to verify trim locations.
- Install vertical trims first.
- Measure the distance between the vertical trims, and check to see that the top & bottom trims are correct length.
- If needed, shorten top & bottom trims to achieve a proper fit.
- If shortened, touch up end of trims with magic marker or touch up paint.





Stoll Industries
153 Highway 201
Abbeville, SC 29620
customerservice@stollindustries.com
www.stollindustries.com

 **WARNING**

This product can expose you to chemicals including Carbon Black, which is known to the State of California to cause cancer.

For more information go to www.P65Warnings.ca.gov