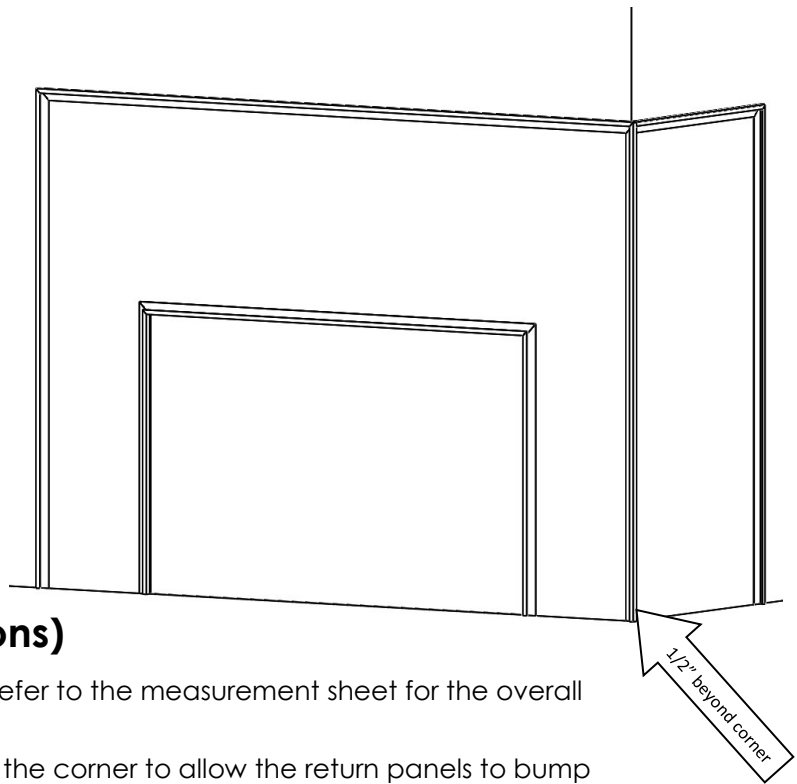


## Step 1a:

- Install all interior & exterior "J" trims as shown. Refer to the measurement sheet for the overall interior and exterior locations of the "J" trims. (Note: in applications with return walls, refer to **Step 1b** for process)
- There are no exterior trims along the floor. The first shiplap panel will rest on the floor.
- Refer to the measurement & number sheet for exact overall locations for "J" trims.
- Note: the shiplap wall panels will fit into the "J" trims and give final support for the trims. Over securing the trims is not necessary.

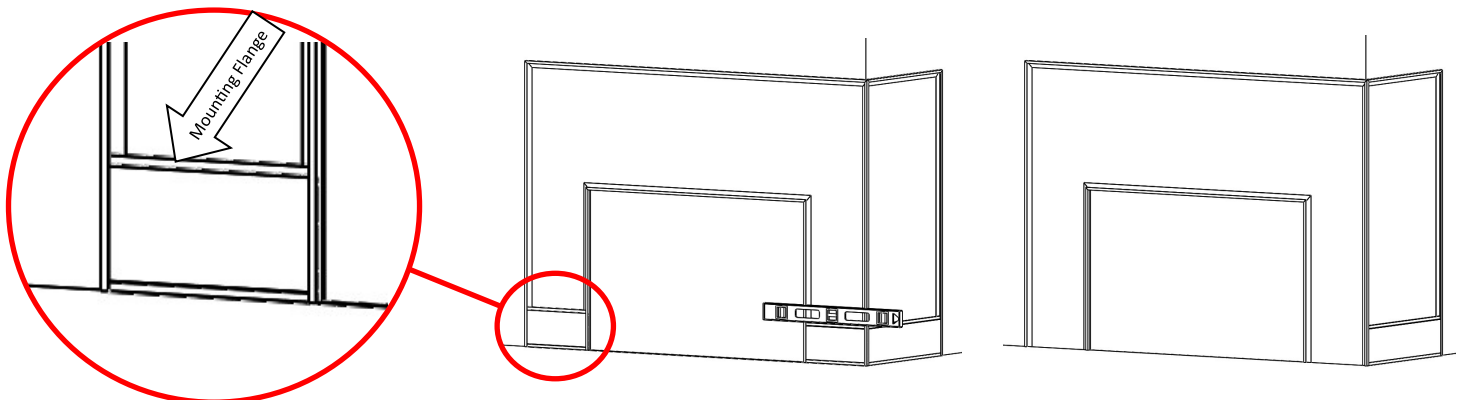
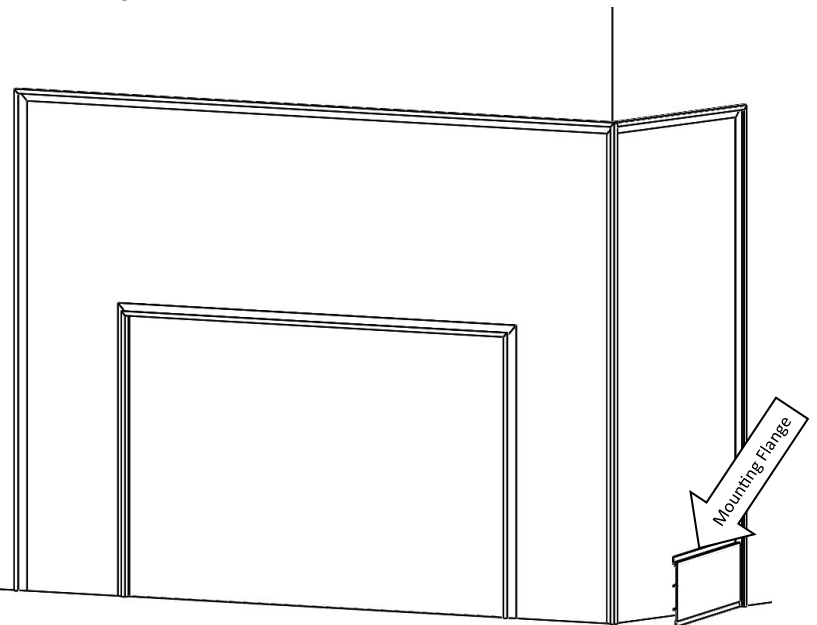


## Step 1b: (Return wall applications)

- Install all interior & exterior "J" trims as shown. Refer to the measurement sheet for the overall interior and exterior locations of the "J" trims.
- Place the corner vertical "J" trim 1/2" beyond the corner to allow the return panels to bump up against the back of the "J" trim.
- There are no exterior trims along the floor. The first shiplap panel will rest on the floor.
- Use measurement & number sheet for exact overall locations for "J" trims.
- **Note:** the shiplap wall panels will fit into the "J" trims and give final support for the trims. Over securing the trims is not necessary.

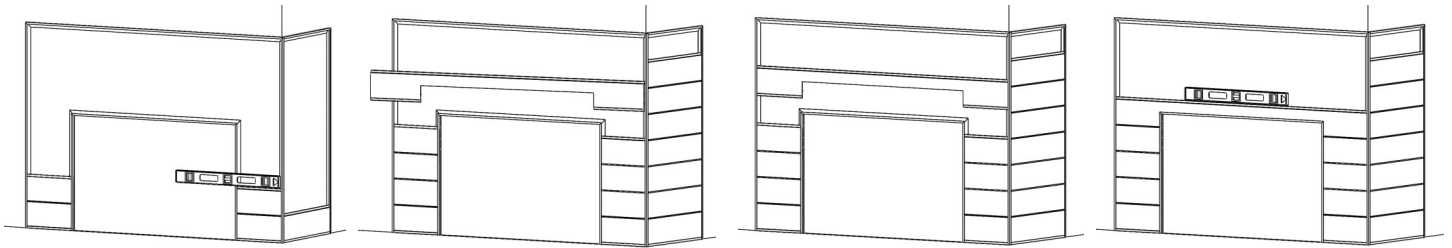
## Step 2:

- Begin panel installation, placing the panels in the orientation shown to the right.
- Refer to the number sheet for exact locations of each numbered panel.
- Level and center the panels inside the vertical "J" trims and secure them to the wall through the recessed flange at the top of the panel. (See diagram below)
- **Note:** drilling holes through the mounting flange while the panels are in the upright position causes shavings to fall into the panel track, hindering proper installation of the next panel. It is recommended to predrill mounting holes and clean the track before placing the panels into position.



## Step 3:

- Install all remaining panels up to the last row.
- **Note:** verify panels remain level as you go.
- Refer to the number sheet for exact locations of each numbered panel.



## Step 4:

- Install the final row of panels by inserting the panel into the top “J” trim, and pulling it down into the panel track below.
- There is no need to secure this panel with screws, as it's held in place by the top “J” trim and shiplap panel below.

