



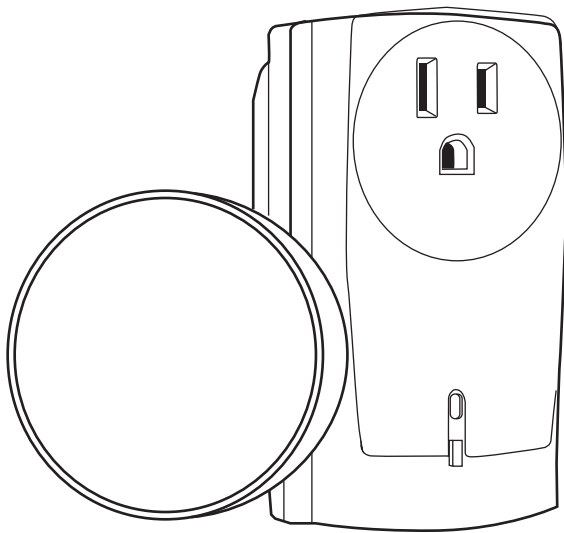
MODEL: 7015

INSTALLATION AND OPERATING INSTRUCTIONS

**IF YOU CANNOT READ OR UNDERSTAND THESE INSTALLATION INSTRUCTIONS
DO NOT ATTEMPT TO INSTALL OR OPERATE**

INTRODUCTION

This remote control system offers the user a 110-120 VAC powered multi-purpose remote control to be used with AC powered products such as lamps, heaters, fans, electric fireplaces and lighting from up to 30 feet away. The system operates on one of 10,000,000 security codes that are programmed into the transmitter at the factory.



The button transmitter has a green and red LED light ring that illuminates when you press and release the top button. Tapping the transmitter one time, turns the appliance ON, emitting one green blink. Double tapping the transmitter turns the appliance OFF, emitting two red blinks.

The receiver plugs directly into a polarized 110-120 VAC grounded receptacle. Then an AC powered appliance is plugged directly into the receiver which is controlled by the transmitter (remote control). In addition the receiver has a red LED indicator light verifying power to the receiver.

If an extension cord is required, only use a (Model 18SPT-3) cord consisting with an appropriate temperature rating for the intended use. Both ends of the extension cord must be grounded and polarized. An extension cord can be purchased from your appliance dealer.

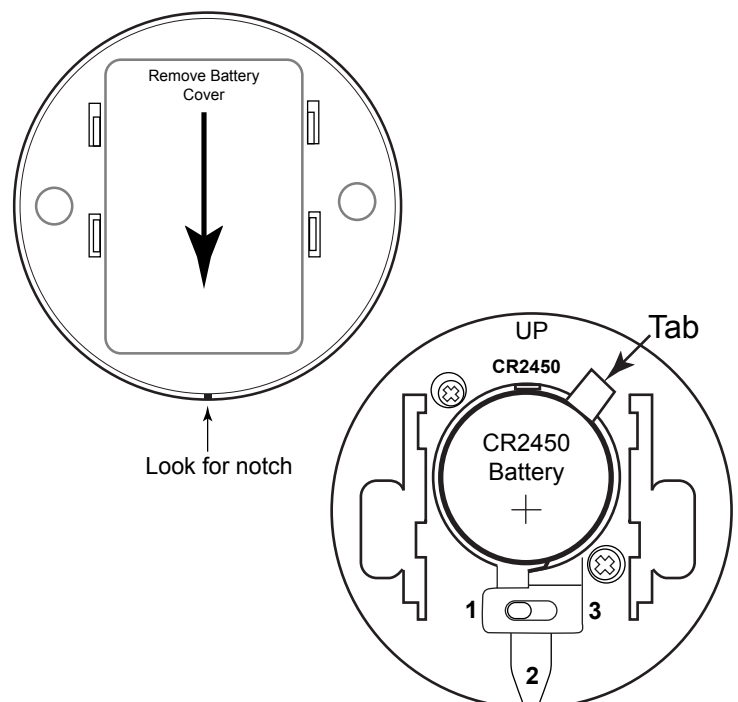
TRANSMITTER

The transmitter operates on (1) 3-volt Lithium CR2450 button cell battery (included), capable of a 3 year battery life. Battery life is calculated at an average of 20 activations per day.

Before using the transmitter, look for a small notch under the battery cover and slide the cover toward the notch and lift it off.

Underneath the battery is an insulation tab. Pull the tab out from underneath the battery. **Note:** Below the area where the battery is installed is a slide switch that shows 3 different positions. This 3 position switch is not used with this system. Ensure the switch is in the #1 position and reinstall the battery cover.

There is a low battery indicator built into the transmitter. A red LED flash will blink once every 4 second indicating the battery level is low.

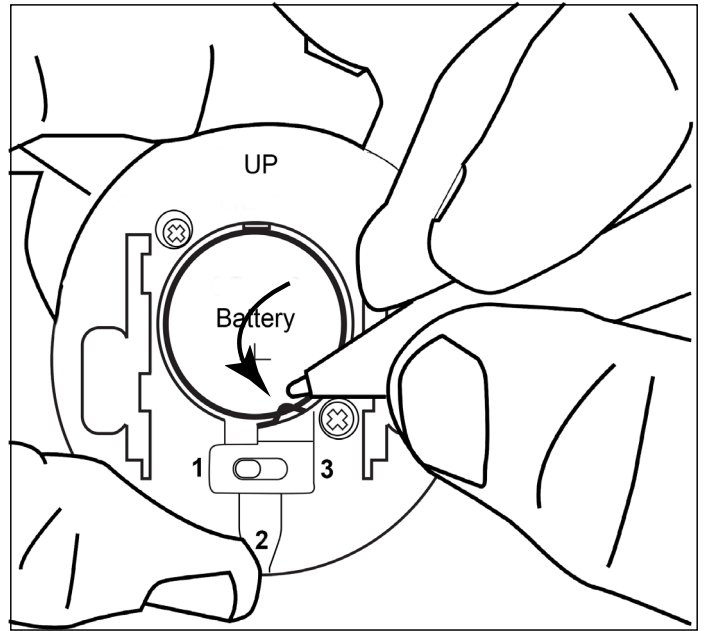


TRANSMITTER CONT.

BATTERY REMOVAL

Tools Needed: Small jewelers screwdriver or a pen.

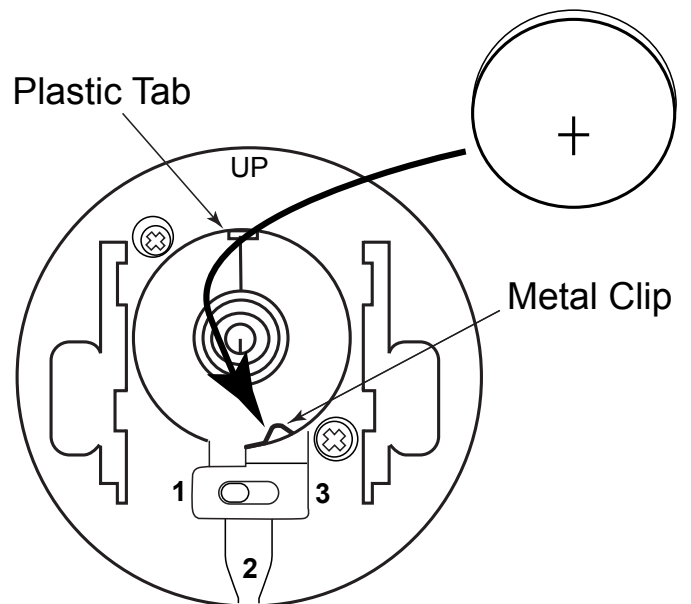
Remove the battery cover. Hold the transmitter upside down in one hand and with the other hand use a pen or small screwdriver to pull down the metal clip. The battery will “pop” up, then use the tip to pry the battery completely out. See illustration.



BATTERY INSTALLATION

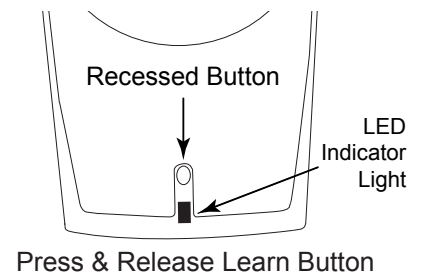
To install a new battery simply place the edge of the battery (positive + side up) under the metal clip first and into the cavity of the transmitter then press down until it snaps into place under the plastic tab.

After battery is installed then replace the battery cover.

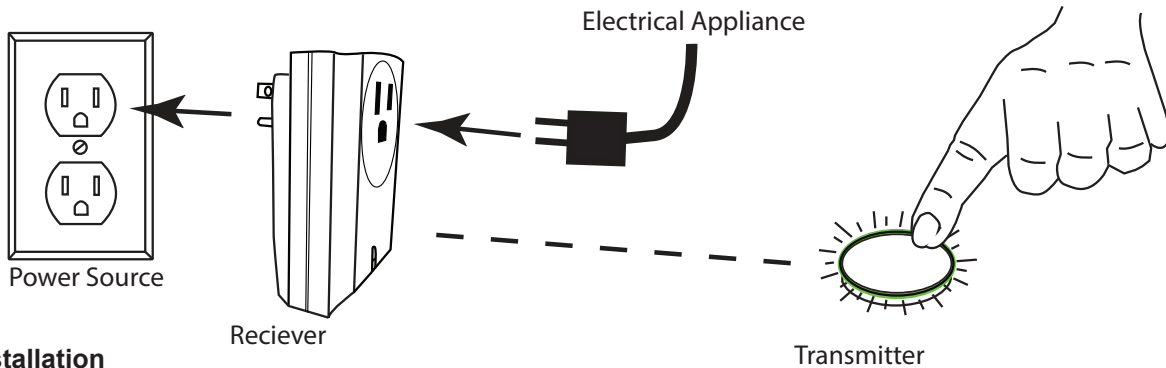


INSTALLATION

Installation is simple. Plug the receiver into a polarized 120 VAC grounded receptacle/outlet. Plug your AC powered electrical appliance into the receptacle of the receiver and **turn the appliance switch ON**. At the bottom of the receiver directly above the indicator light is a recessed “learn” button. Use a toothpick, or pencil tip to press the button in and release. Tap and release the top of the transmitter one time. The LED light ring will emit one green blink of light on the transmitter and the LED light on the receiver will blink and click two times, indicating that the transmitter’s code has been accepted. Each time the transmitter is pressed the receiver LED light will flash once indicating it has received the command.



Once your AC electrical appliance is connected to the receiver, the remote is ready to operate. To turn ON the appliance, press the button once on the transmitter. To turn OFF the appliance, press the button twice on the transmitter. **Note:** The red LED indicator light remains ON any time the receiver is plugged in.



Basic Installation

MOUNTING TRANSMITTER ON A SURFACE

The transmitter can be mounted with double sided adhesive tape (enclosed) or mounting screws (supplied) with this system. It can be mounted on a flat surface or a flat wall. **Note:** Tape may need to be trimmed.

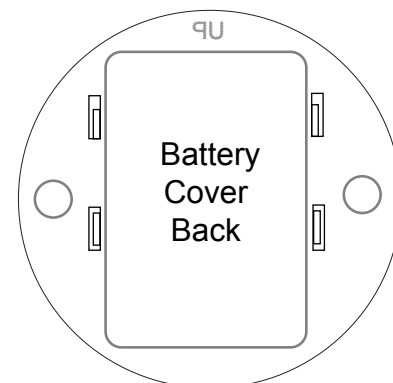
Double Sided Adhesive Tape Install: Peel one side of the double sided adhesive tape and apply it to the battery cover back. Remove the battery cover back from the transmitter and look for the letters UP. After tape is applied to the lid, peel the other side off the tape off and press it against a flat surface.

When installation is complete, align the letters UP on the battery cover with UP letters on the transmitter, then slide and lock the transmitter back into place.

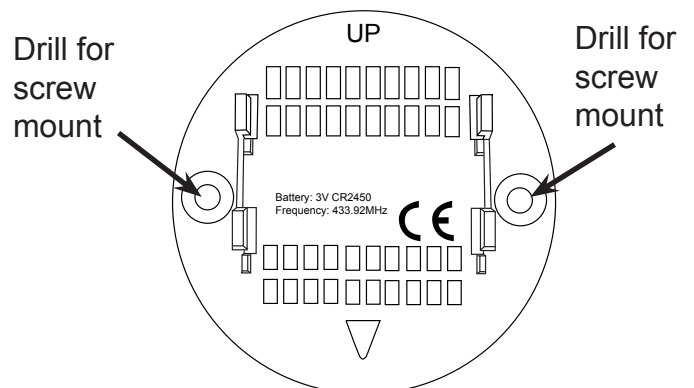
Mounting With Screws: When mounting the transmitter to a wall, remove the battery cover back from the transmitter and look for the letters UP.

Use the mounting screws as an additional method to secure transmitter to a surface. Clearance holes will need to be drilled in the battery cover then secure the screws with a Phillips hand screwdriver. **Note:** It is recommended not to use a power screwdriver. Secure the battery cover back into place with UP at the top.

When installation is complete, align the letters UP on the battery cover with UP letters on the transmitter then slide it into place and lock it.



Outside of battery cover.



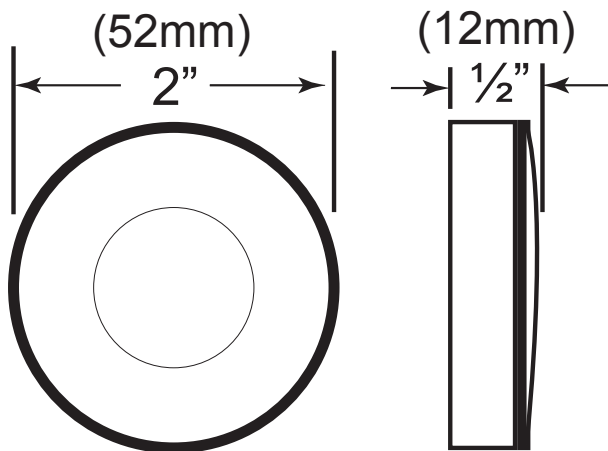
Inside of battery cover.

TROUBLESHOOTING

If you encounter problems with your 7015, the problem may be with the electrical appliance itself, the remote or the receiver. Review the electrical appliance manufacturer's operation manual to make sure all connections are properly made. Then check the operation of the remote in the following manner:

- Ensure the electrical appliance switch plugged into the receiver is turned ON.
- Make sure the the RECEIVER has power and the red LED light is illuminating. Try another appliance you know that works or test with receiver receptacle for 120VAC with a volt meter.
- Check the battery in the Transmitter to ensure it is installed with the (+) side up and has at least 3VDC.
- Be sure RECEIVER and Transmitter are within 30-foot operating range.
- Keep RECEIVER from temperatures exceeding 130°F.
- If RECEIVER is installed in tightly enclosed metal surroundings, the operating distance will be shortened.

DIMENSIONS



Federal Communication Commission Interference Statement

This device complies with part 15 of the FCC Rules. Operation is subject to the following two conditions:

(1) This device may not cause harmful interference, and (2) this device must accept any interference received, including interference that may cause undesired operation.

Note: This equipment has been tested and found to comply with the limits for a Class B digital device, pursuant to part 15 of the FCC Rules. These limits are designed to provide reasonable protection against harmful interference in a residential installation. This equipment generates, uses and can radiate radio frequency energy and, if not installed and used in accordance with the instructions, may cause harmful interference to radio communications. However, there is no guarantee that interference will not occur in a particular installation. If this equipment does cause harmful interference to radio or television reception, which can be determined by turning the equipment off and on, the user is encouraged to try to correct the interference by one or more of the following measures:

- Reorient or relocate the receiving antenna.
- Increase the separation between the equipment and receiver.
- Connect the equipment into an outlet on a circuit different from that to which the receiver is connected.
- Consult the dealer or an experienced radio/TV technician for help.

Note: The Grantee is not responsible for any changes or modifications not expressly approved by the party responsible for compliance. Such modifications could void the user's authority to operate the equipment.

RF Warning

The device has been evaluated to meet general RF exposure requirement. This equipment complies with FCC's RF radiation exposure limits set forth for an uncontrolled environment. This device and its antenna(s) must not be co-located or conjunction with any other antenna or transmitter.

IC Warning

This device complies with Industry Canada license-exempt RSS standard(s).

Operation is subject to the following two conditions: (1) this device may not cause interference, and (2) this device must accept any interference, including interference that may cause undesired operation of the device.

Le présent appareil est conforme aux CNR d'Industrie Canada applicables aux appareils radio exempts de licence.

L'exploitation est autorisée aux deux conditions suivantes : (1) l'appareil ne doit pas produire de brouillage, et (2) l'utilisateur de l'appareil doit accepter tout brouillage radioélectrique subi, même si le brouillage est susceptible d'en compromettre le fonctionnement.

SPECIFICATIONS

BATTERIES: Transmitter 3V button cell (CR2450) FCC ID No.'s: Transmitter KL9-7001TX
Operating Frequency: 433.92MHz Canadian IC ID No.'s: Transmitter 2439A-7001TX



FC Intertek
5018059

CONFORMS TO UL STD 60730-1

FOR INDOOR USE ONLY

Load Ratings: Resistive 15A (1800W),
Motor 1/3HP, Tungsten Lamp 600W
Input: 120VAC/ 60Hz

**FOR TECHNICAL
SERVICE, CALL:**

U.S. INQUIRIES
(855) 498-8324 or (260) 459-1703

CANADIAN INQUIRIES
(877) 472-3923

Skytech Products Group
9230 Conservation Way
Fort Wayne, IN 46809
Sales Support: (888) 699-6167
Website: www.skytechpg.com

MANUFACTURED EXCLUSIVELY FOR SKYTECH II, INC



LIMITED WARRANTY

1. **Limited Warranty.** Skytech II, Inc. ("Skytech") warrants that each new Skytech Control System, including all hardware, parts and components (the "System"), when used in accordance with the instructions furnished by Skytech provided with each System, shall be free in all material respects, of defects in materials and any workmanship under normal use, subject to proper installation ("Limited Warranty"). This Limited Warranty is non-transferrable and sets forth our sole and exclusive liability and the sole and exclusive remedies available in relationship to any non-conformity, defect or similar claim. This Limited Warranty only extends to the original retail purchaser of the System (the "Customer") and expires upon any sale or transfer of the home where the System is installed by the Customer.
2. **System Sold As Is.** Subject to this Warranty and any applicable state law, each System is sold by Skytech to a Customer, limitations, reservations of rights, exclusions, and qualifications set forth on Skytech's website, www.skytechpg.com, all of which are considered part of the Warranty and are incorporated herein (collectively, the "Additional Terms"). Each Customer, by purchasing and/or using any System or any portion thereof, does so subject to the Warranty and the Additional Terms.
3. **Installation and Use of System.** Improper Installation, adjustment, alteration, service, or maintenance can cause property damage, personal injury, or loss of life. Thoroughly read the installation and operating instructions of this Control as well as the appliance it will be used in conjunction with as a system. If applicable, read the maintenance instructions before installing this control. This product is designed for use with an attended hearth appliance or fire feature. Adults must be present when the Control System is operating. DO NOT program or thermostatically set this Control to operate a hearth appliance or fire feature when Adults are not physically present. Furthermore, DO NOT leave the hearth appliance or fire feature burning unattended; it may cause damage or serious injury. If an Adult is going to be away from the hearth appliance or fire feature for any length of time, then the handheld/wall mount, receiver/control module and application should be in the "OFF" position.
4. **Repair or Replacement of System or Parts.** Should any System, or any hardware, components and/or parts contained therein fail due to a defect in workmanship or material provided by Skytech after the purchase of a System by a Customer, Skytech shall repair or, at its option, replace the defective System or part, hardware or component, subject to the Customer's compliance with all terms and conditions contained herein governing service and claims under the Warranty. Skytech shall provide replacement parts at no charge for the first (5) five years of this warranty, and at market cost for the Lifetime of the product to the original Customer. Gas valve and gas valve components will be available at no charge for one (1) year. If Skytech does not have the parts for an individual model, then a comparable replacement System will be provided at no charge within the first (5) five years after purchase, and then at market cost for the Lifetime of that product to the Customer.
5. **Warranty Claims; Skytech Service.** To submit a valid claim under the Warranty (each, a "Valid Claim"), a Customer must comply with the following:
 - a) Obtain a Return Material Authorization ("RMA") number from Skytech by calling (855) 498-8324; and
 - b) Provide written notice to a Skytech or an Authorized Dealer ("Dealer") and provide the Name, House Address, Email Address and Telephone Number of the Customer;
 - c) Describe the System model number and nature of the defect, nonconformity, or other problem with the System;
 - d) Provide such notice within thirty (30) days of discovery of such defect, nonconformity, or problem;
 - e) securely pack and ship the defective Skytech Product to Skytech II, Inc. ATTN: Warranty Department at 9230 Conservation, Fort Wayne, IN 46809. Customer assumes all costs and risks associated with transportation to Skytech (i) the RMA number is only valid for thirty (30) days from the date the RMA was issued, (ii) the RMA number should be clearly marked on the outside of each box being returned. Skytech may refuse shipments that DO NOT meet all of the Valid Claim requirements. Skytech is not responsible for any refused shipments or any damage caused due to shipping, whether or not it was a Valid Claim. Skytech shall be responsible for return shipment charges. Compliance with these requirements is a condition to coverage under this Limited Warranty.

Skytech may refuse any shipment(s) that does not meet all of the Valid Claim requirements. Skytech is not responsible for any refused shipments or any damage caused due to shipping, whether or not it was a Valid Claim. Skytech shall be responsible for reasonable return shipment charges for any Skytech System returned whether or not Skytech determines there is no defect with the System, reject for failure of the Customer to submit a Valid Claim, or otherwise determine is not eligible for service under the Warranty.

Upon receipt of a Valid Claim and the properly-returned System, Skytech shall, at its option, either (a) repair the System, at no charge to the Customer, or (b) replace the returned System with a new comparable System, at no charge to the Customer, or (c) provide the Customer with a refund in an amount equal to the price paid by the Customer for the defective System not including any service or labor cost associated with the installation or otherwise. Any System or

hardware, component or part repaired by Skytech hereunder, or any replacement System, hardware, component or part shall be shipped to the Customer by Skytech at Skytech's cost and the Warranty, the Additional Terms, and all other terms and conditions set forth herein shall extend to such repaired or replacement System, hardware, component or part. Skytech shall pay no refund before Skytech from the Customer receives the defective System, hardware, component and/or parts. Any obligation of Skytech under this Section 4 shall be and remain subject to Skytech's right to physically inspect the defective System, hardware, component and/or part returned to Skytech by the Customer. Some States do not allow the exclusion or limitation of incidental and consequential damages or limitation on how long an implied warranty lasts, so the above limitation may not apply to you. This warranty gives you specific rights and you may have other rights, which vary from state, province, or nation. To the extent allowable under any law, the liability of Skytech is limited to the express terms of this warranty, and Skytech expressly disclaims any and all implied warranties, including any warranties of fitness for a particular purpose or merchantability.

REV. 2-24-17



Print information and detach at dotted line and return to: Skytech Products Group, Attn. Warranty Dept.,
9230 Conservation Way, Fort Wayne, IN 46809 Phone: (855)498-8224

Warranty Information

Purchase Date: _____ Model: _____ Date Code: _____

Purchased From: _____

Customer Name: _____ Phone: _____

Address: _____

City: _____ State/Prov. _____ Zip/Postal Code _____

E-mail Address: _____

Back of remote date code sample

19	●	1	2	3	4	5	6
20		7	8	9	10	11	12

1-12 indicates Month remote was produced.
19-20 indicates Year remote was produced.
Sample date codes above is 1911

Please send a Proof of Purchase (original receipt) copy along with your warranty form.