

# NIGHT IMPRESSIONS

OUTDOOR FIRE AND WATER PRODUCTS

Commercial and Residential  
Packages • Inserts • Bowls • Burners • Accessories



FIRE INSPIRED™

Lifetime Warranty  
on All Burners

Inspired by safety.  
Innovated for your lifestyle.



**BILT.**®



# ABOUT CANNED HEAT

## Our Story

Founded over 30 years ago, Canned Heat was built on the foundation of providing unique, quality indoor/outdoor fireplaces and premium customer service. Over the years, Canned Heat has become a global brand featuring contemporary product lines that combine function with style while building lasting relationships with our dealer partners. Today, we source the world for beautiful fireplaces that have become our hallmark. Our fireplaces are attractively showcased at hotels, restaurants, resorts and many other venues.

## Our Products

We want to surround ourselves with things we love - clean, simple fireplace designs that reflect our modern world and extend our welcome while enjoy time together.

Fireplaces that complement our varied, vibrant living spaces, and bring our individual style to the room at the home. Our collections are improved and refreshed so that it captures latest the trends and technology.

## Our People

At the heart of our business are our people. People that take pride in strong work ethics and a desire to be a part of a team that's like a family. People that appreciate good design and contribute to the success of our overall goals.

People that are passionate about providing the best customer service possible.

We are recognized as an innovative and quality leader and are committed to the highest level of service to our Residential, Commercial Designers, Distributors and Dealers.

*\*please note that in keeping with our ongoing efforts to lessen the impact on the world resources this catalogue is only available in a digital version*

---

## Landscape products made for your outdoor living space.

Gather with friends and family around the fire. HPC products includes burner inserts, firepits, fire bowls and so much more, that make it easy to start enjoying evenings year round like they were meant to be. Depending on your style, there are a variety of different options to complement your outdoor space.

## Pricing Structure

Qualified Dealers receive the same discount off HPC products, as they receive from Amantii Electric or Sierra Flame Gas.

Distributors – For larger quantity purchases, distributor discounts may be available. Please request a special quotation on larger quantity orders.



# THE MOST CSA-CERTIFIED PRODUCTS







# FORNO DE PIZZA HYBRID OVENS





# FINALLY A WOOD OVEN MADE FOR THE SPEED OF YOUR LIFE

## Forno de Pizza Ovens, a Hybrid Gas and Wood Oven

Want to make pizza's in 90 seconds, bake, smoke or cook anything you want outside? The Forno de Pizza oven is specifically designed to heat up in 30 min, not 2 hours like conventional wood fired ovens.

**Finishes** Go to [HPCfire.com](http://HPCfire.com) for all finishes and accessories



### FORNO EI SERIES

Includes Glass Tiled Oven, Stainless Steel Hearth, Vent, Powder Coat Black Steel Cart



### VILLA SERIES

Includes Glass Tiled Oven, Stainless Steel Hearth, Vent, Flange Mount



### DI NAPOLI SERIES

Includes Oven, Stainless Steel Hearth, Ready To Finish Enclosure

## Forno de Pizza

### Points of Difference

**Hybrid**-both Gas and Wood Burning

### Multi Purpose

Smoker  
Oven  
Pizza

### No stack Design

Sleek Design  
Retains More Heat

**Options:** LP or NG Gas

**Portable or Built-In Oven**

**HPC EI Controls**-Simple and easy to ignite the wood



Cedar Plank Salmon, and Asparagus



Duck, Kale and Beans, and Oranges



Lobster Tail, Steak, and Oranges



Watch all the video's at [hpcfire.com](http://hpcfire.com)



# NEW PRODUCT FEATURES



## SST TORPEDO™ BURNERS

The commercial-grade SST Torpedo™ burner, available in Penta, Linear and H configurations, is our newly designed nozzle which creates the biggest flame and is targeting those customers seeking an aesthetic and experience more like a bonfire. The goal is to give customers yet another option that is inspired by safety, innovated for their lifestyle. This is a great addition to our product offerings, providing customers with an array of flame options.



**SST Torpedo Penta Burner**  
*In the largest flame  
on the market*

## ALUMINUM FIRE PIT BOWLS

These bowls will come in a few finishes when released. They have been Hydro Dipped for the best finish possible and are hand-inspected to ensure the highest quality.



## SPORT PIT

The HPC Sport Pit Series is a camper's, tailgaters, and backyard hangers dream. With a lid that spins on with the twist of a wrist keeping the glass media in place and providing a handle for easy transport it's the fire pit for anyone on the go. There is a quick LP Tank hookup that allows for easy setup and tear-down so you never miss a moment.



13" tall

**For all New Products go to  
[HPCfire.com/new-products](https://hpcfire.com/new-products)**

**With continued Innovation comes  
regular change!**

At HPC Fire Inspired™ we are working on new products daily! We will keep you updated via e-mail blasts, social media and a web page that will have all new products as they are released. Sign up for the newsletter at [HPCfire.com/contact](https://hpcfire.com/contact).



# FLAME CONTROL





# THE GREATEST FLEXIBILITY IN THE INDUSTRY

Three certified technologies to choose from:



ELECTRONIC IGNITION



PUSH-BUTTON /  
FLAME SENSING



MATCH-LIT



Our electronic ignition is now available with Bluetooth® and our new, easy-to-use app for Apple® and Android™ devices.

## Improved remote control electronic ignition

HPC has taken our electronic control module with thermocouple sensing to a higher performance level.

- Hot surface igniter – for natural gas or propane – provides stronger, more reliable ignition with longer life
- Internal temperature monitoring automatically shuts off to prevent overheating damage to the unit
- Flame sensing – automatically relights if flame blows out
- Drip leg manifold brings extra gas valve protection

- Remote control unit – optional with on / off model – offers high / low flame height adjustment and LED fire pit performance feedback
- Meets 2020 ANSI standards for safety redundant system and humidity.

**On / Off Models:** Provide on / off operation via a wall switch or optional handheld remote

**High / Low Flame Models:** Includes new remote with on / off functions, diagnostic fire pit feedback and high / low flame adjustment. Available with Bluetooth® control and our new, easy-to-use app for Apple® and Android™ devices

## Match-Lit Kits

For LP and NG applications. Includes burner, valve and key, flange, flex-line hose and fittings.



The Bluetooth® word mark and logos are registered trademarks owned by Bluetooth SIG, Inc.

Apple® is registered trademarks of Apple Inc.

Android™ is a trademark of Google Inc.



# CERTIFIED FOR SAFETY





## Fire Pit Inserts

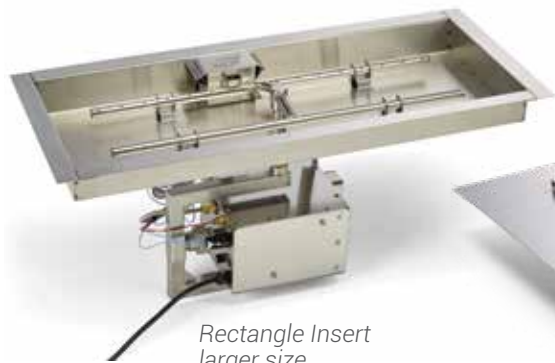
The proven leader in outdoor fire technology, HPC offers:

- More CSA-certified inserts than any other company
- Inserts in assorted sizes and shapes, including 36" and 42" square and 54" round inserts, as well as Penta burner, H-burner and linear designs
- Three CSA-certified technologies for all inserts: Match-Lit, Push-Button / Flame Sensing, and Remote Electronic Ignition
- Inserts that come complete with burner, pan and related electronics

**NEW** Square bowl pan insert. 12 models from 18" x 18" up to 42" x 42" allows installation versatility.



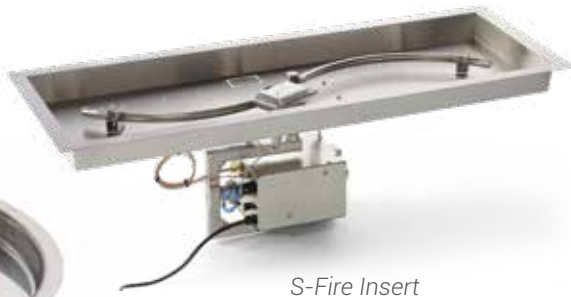
Square Bowl Pan Insert



Rectangle Insert  
larger size  
up to 90" x 16"



Square Flat Insert



S-Fire Insert



Penta Insert



Linear Trough Insert

## Patented Penta Burners



Blowout box protects from wind and rain. Newly designed vents for proper combustion, whatever the weather.

Innovative raised hub design – reduces unwanted water

Patented five-lobe design creates a taller center flame for a campfire effect

## More Penta advantages:

- Uses less fuel to attain same flame height as fire ring
- Burner holes engineered to give NO distinct burner pattern on low flame setting
- Low profile design requires less media
- Available with CSA-certified Electronic Ignition stainless steel flex line for easier, faster installation
- Designed to shed water – no clogging or valve damage

**CSA-CERTIFIED INSERTS  
ARE FULLY ASSEMBLED  
AND 100% BURN TESTED!**



# IGNITING INSPIRATION

A photograph of a modern outdoor living space. In the foreground, a large, dark, rectangular fire pit is filled with black stones and has a bright orange fire burning in it. To the left of the fire pit is a swimming pool with blue water. In the background, there is a stone fireplace with a dark opening, flanked by two blue planters. A stone wall and a paved area are also visible. The scene is set in a lush, green environment with trees and palm plants. The text "IGNITING INSPIRATION" is overlaid in large, white, bold letters at the top right.



# UNIQUE FIRE FEATURES FOR COMMERCIAL AND RESIDENTIAL

## Ready-to-Finish Packages

Provides flexibility to finish with stone, veneer, stucco, or brick. Includes certified Electronic Ignition, Push-Button / Flame-Sensing and Match-Lit inserts.



Round



Octagon



Rectangle



Square

## Small LP Tank Kits



## Match-Lit TK Torches

Flame-sensing TK Torches for natural gas or propane in black or hammered copper. Head only assembly available for column mounting.



## Copper Fire Bowls

Beautiful, oil rubbed, hammered or smooth finish. No two alike! Assorted sizes and shapes. Available in CSA-certified Remote Electronic Ignition or Match-Lit flame control.



Sedona



Sierra



Phoenix Bowl



Tempe



Mesa



# FIRE MEETS WATER





## MORE CHOICES, FINISHES, AND SHAPES

### Copper Fire and Water Bowls – 12 Volt System

Beautiful, oil rubbed, hammered or smooth finish. No two alike!  
Assorted sizes and shapes.  
Available in CSA-certified Remote Electronic Ignition or Match-Lit.  
Perfect for poolside!



Sedona



Tempe



Mesa



Sierra



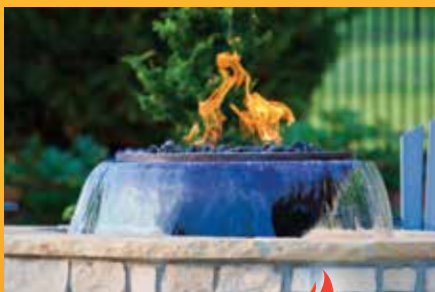
Built-in access door offers safe, easy lighting

### Evolution 360 and H2Onfire

Unforgettable impact in residential or commercial settings! Both combine fire, soothing water and beautiful blue LED lights.

- **Evolution 360** – Fire and water
- **H2Onfire** – Fire on top of water

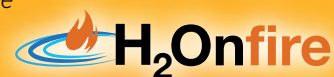
Go to [hpcfire.com](http://hpcfire.com) for more on these one-of-a-kind innovations.



Evolution 360



H2Onfire





# TECHNOLOGY INNOVATIONS



## NEVER MISS AN ANNOUNCEMENT WITH THE HPC FIRE INSPIRED NEWSLETTER

### INTERESTED IN NEW PRODUCTS, PROMOS, SALES TRAINING OR SAVINGS ON PRODUCTS?

Everything that is going on at HPC delivered to your e-mail weekly. We showcase new products, tech talks, dealer portal promos and updated contacts so you have the most relevant information.



## HPC FIRE AR APP

### SELECT, SCAN AND SEE OUR DESIGNS IN YOUR SPACE

HPC Fire Inspired new augmented reality app lets you select options, scan your area, and place our products in your design so you or your client can see in real-time how the fire feature will look in your design in real-time. Just select, scan & see the design in real time.

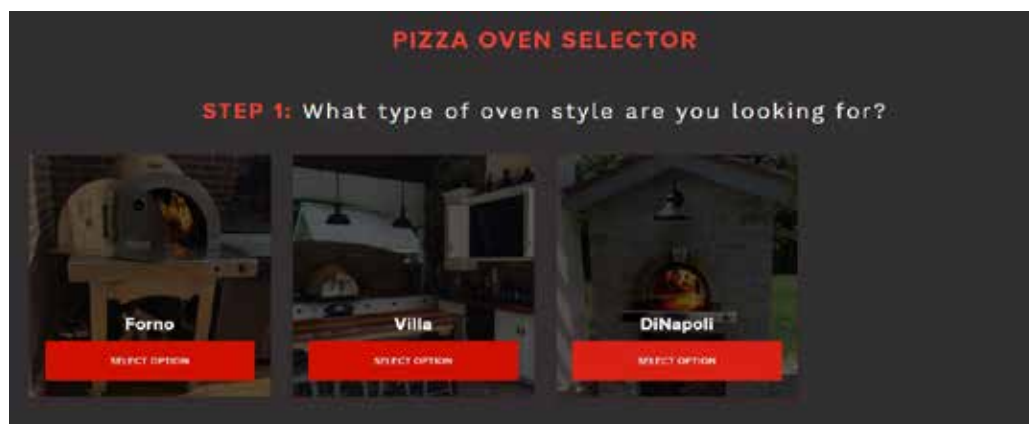
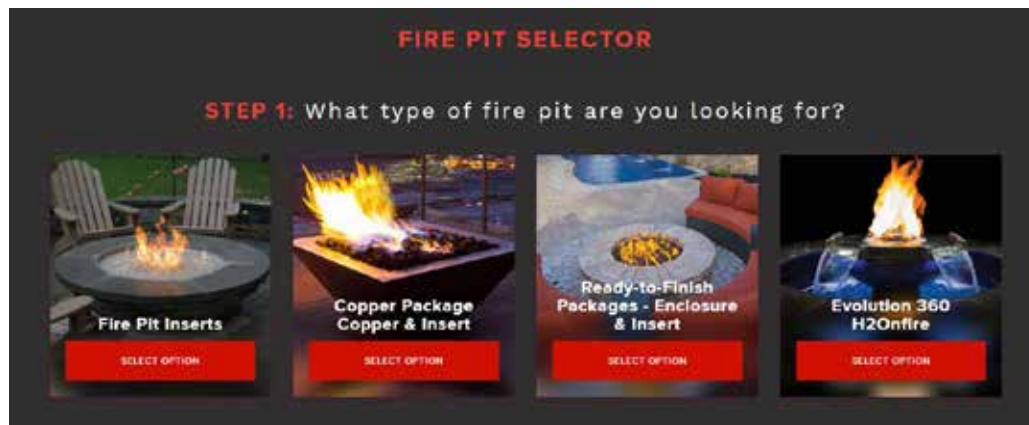
Download it today on your Apple, Droid, or Google phone today by searching "HPC Fire AR". Or go to [hpcfire.com/hpc-fire-ar](http://hpcfire.com/hpc-fire-ar)



## FIND THE RIGHT PRODUCT IN LESS THAN 1 MIN...

### AND KNOW THE QUESTIONS THAT WILL BE ASKED BY YOUR INSTALLER

Our fire pit selector and the pizza oven selector will eliminate your questions or at a least let you know the main questions to consider when looking for a fire product. It will take you through every option available on any fire pit or oven that we make and give you the exact SKU you are looking for.





# LIFETIME WARRANTY BURNERS

## OUR BURNERS ARE UNIQUE – NOT TO MENTION BUILT TOUGH

### Fire Rings and Burners with Lifetime Warranty

Available in round, square, or rectangular, T-burner or S-Fire styles with standard or high capacity flow.

- Staggered burner ports for more attractive flame pattern
- Raised hub reduces risk of water in valve or gas line
- Optional pans available for installation ease and containing media



*Square Burner  
Larger models 36" and 48"*



*Rectangular Burner  
Larger models  
36" x 18" and 48" x 24"*



*Penta Burner*



*Round Burner*



*Fire Pit H-Burner*



*T-Burner Raised Hub*



*S-Fire Burner*



*SST Torpedo™ Penta Burner*



*SST Torpedo™ H-Burner*



*SST Torpedo™ Linear Burner*

### Linear Push Button Fireplace Burner

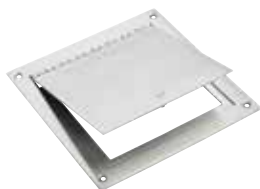
Models Include – 27", 33", 51", 63, 75, and 87" lengths.





# FINISHING TOUCHES

## ACCESSORIES FOR FIRE FEATURES



### Access Doors

Recessed or surface mount Access Doors provide easy access for Match-Lit and other manual systems.

- Simplify installation
- Overcome hard pipe obstacles
- Provide easy lighting and service

### Automatic Shutoff Timers

For outdoor use.

- Assorted styles and time ranges
- NEMA Box shown



### Stainless Steel Flex Lines

The widest selection for outdoor gas fire pits.

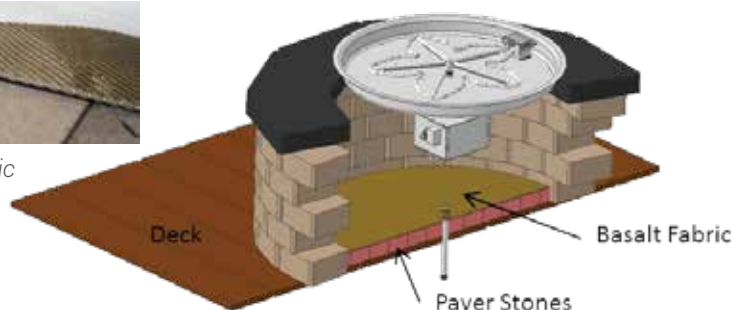
- Available in tranquil free, standard, high and ultra-high capacities
- Lengths up to 48"
- Whistle-free available



### Deck Install Kit



Basalt Fabric



### Covers

For covering copper bowls or outdoor fire pits

- Hammered, oil-rubbed copper lids in four sizes and shapes
- Lightweight, powder-coated, shallow covers in black or copper vein color for a clean, low profile look



### Glass Wind Guards

Surround fire / water features to reduce flame disturbance and prevent loose items from getting too close to flames.



Round up to 48"



Square up to 49"



Linear up to 67"



## MORE MEDIA CHOICES

### Outdoor Logs

Three new styles of high-performing, refractory fire logs are now available. Cast from actual pieces of wood, our outdoor refractory logs deliver unmatched realism and detail. Long-lasting and much more resistant to breakage, refractory logs fit linear, H-burner, square and round fire pits.



Arizona Weathered Oak



Aspen Birch



Western Driftwood

### Lava Rocks and Stones



Lava rocks provide a base that increases combustion efficiency.

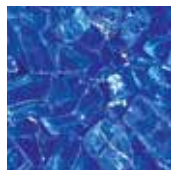


Lightweight black and multicolor river rocks withstand outdoor elements beautifully.



Rolled lava stone provides a smooth finish.

### Decorative Glass



HPC has 10 colors to choose from –  
The glass shown - is 1/4"

### Safety First. Safety Always.

Safety overrides everything here at HPC.

- Our products are designed, tested, and CSA-certified for safety
- Our NFI®-certified people are schooled in the highest standards of hearth safety protocols
- We offer a single source of family-safe fire features at **Fireplace DoorsOnline.com**, with the latest safety updates on hearth products and tutorials on safe hearth practices

Safety isn't an option at HPC. It's a mandate that overrides everything, to give you the greatest peace of mind.



**FIRE INSPIRED™**

Inspired by safety.  
Innovated for your lifestyle.

Distributed by: